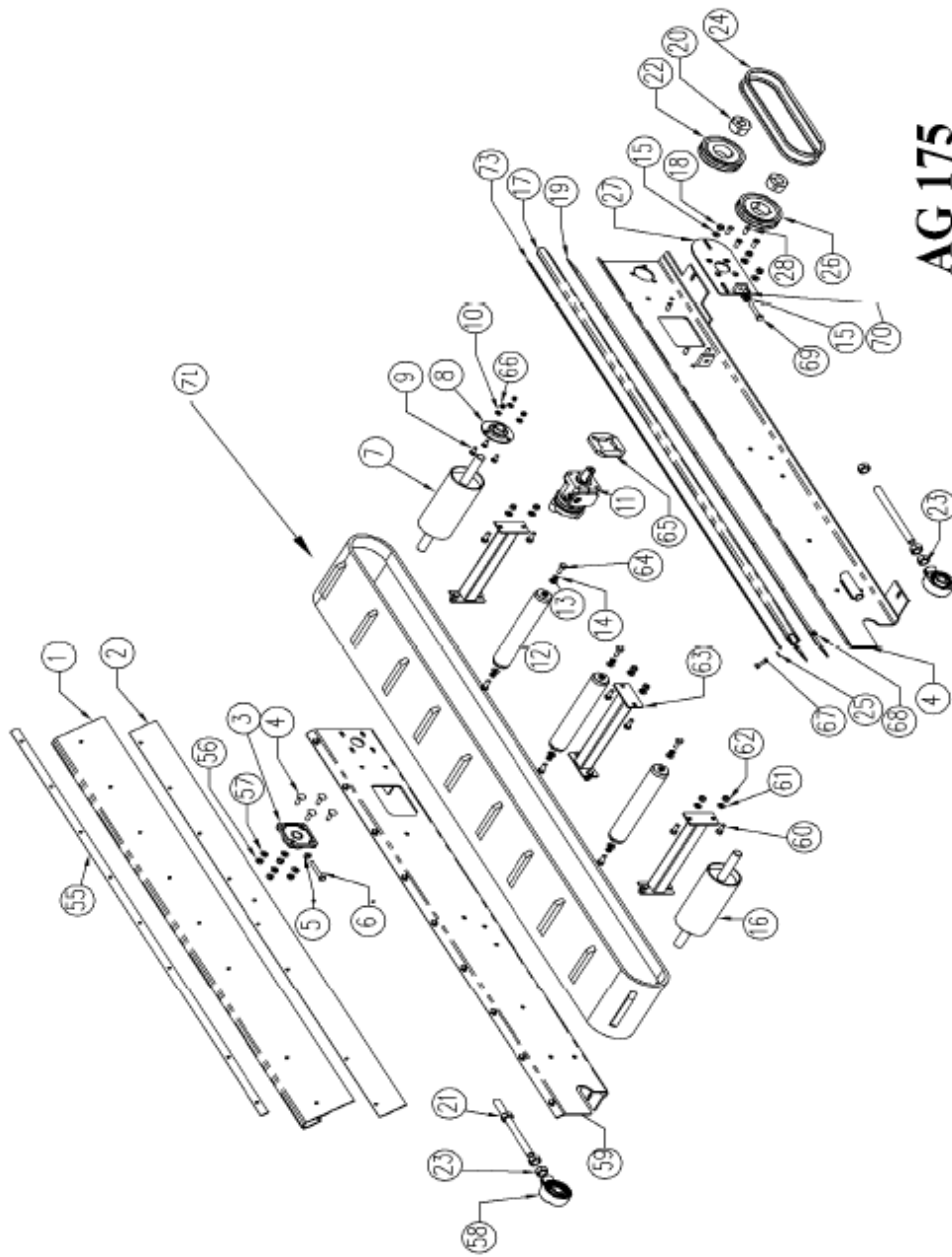
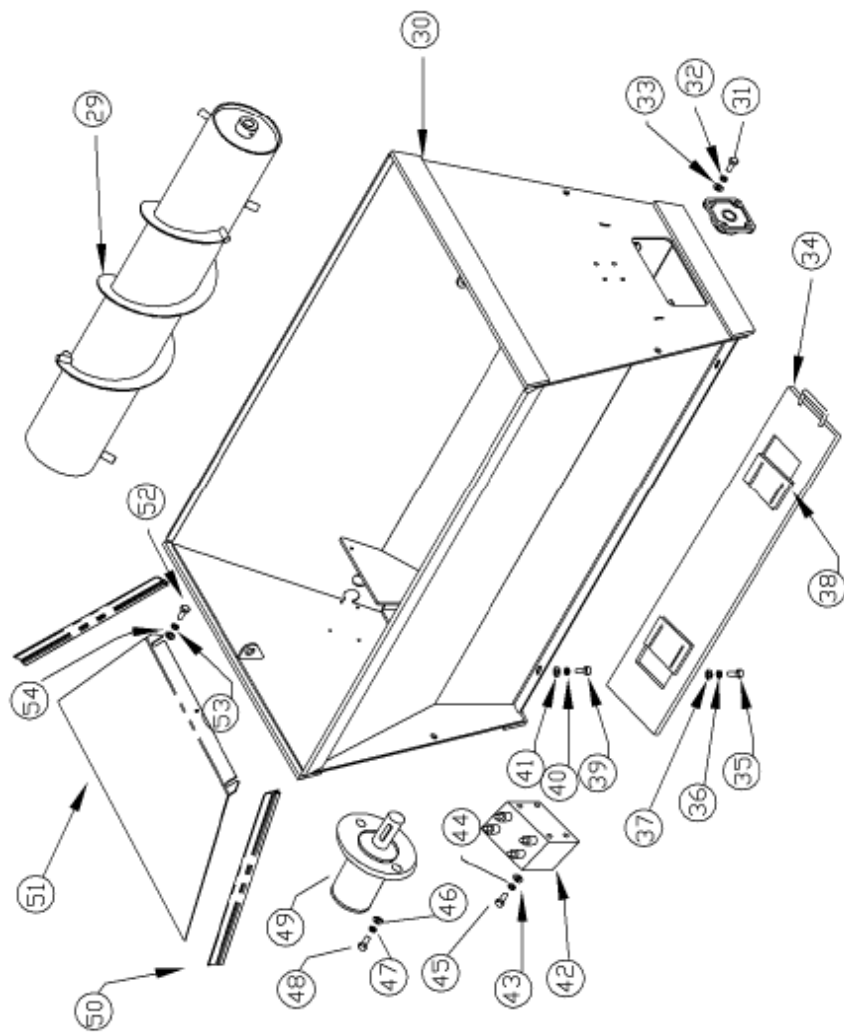


AG 175 CONVEYOR



AG 175 MAIN BIN



AG 175

Machine	ITEM NO.	QUANTITY	PART NO.	DESCRIPTION
AG 175	1	1	MC8-1	Side skirt
AG 175	2	1	MC8-2	Side skirt (large) metal clamp
AG 175	3	1	MC8-8	Flange bearing (Conveyor)
AG 175	4	4	MC8-29	M10 *30 Cup Square bolt
AG 175	5	3	MC8-9	M10 plain nut
AG 175	6	1	MC8-15	M10 * 20 H.T Setscrew (8.8)
AG 175	7	1	MC8-3	Head roller
AG 175	8	1	MC8-7	Flange bearing
AG 175	9	3	MC8-29	M8 * 30 Cup Square Bolt
AG 175	10	3	MC8-22	M8 plain washer
AG 175	11	1	MC8-18	Hydraulic motor (conveyor) DH2s
AG 175	12	3	MC8-4	Idler roller
AG 175	13	6	MC8-12	M10 plain M10 washer
AG 175	14	6	MC8-32	M10 spring washer
AG 175	15	2	MC8-12	M10 plain washer
AG 175	16	1	MC8-5	Head roller
AG 175	17	1	MC8-6	Side skirt
AG 175	18	4	MC8-27	M10 nyloc nut
AG 175	19	1	MC8-7	Side skirt (large) metal clamp
AG 175	20	2	MC8-1	Tapered bush
AG 175	21	2	MC8-3	Threaded tension bar
AG 175	22	1	MC8-2	Pulley
AG 175	23	6	MC8-10	M20 plain nut
AG 175	24	2	MC8-5	V belt (XPZ500 - STANDARD)
AG 175	25	18	MC8-22	M8 plain washer
AG 175	26	1	MC8-2	Pulley
AG 175	27	1	MC8-4	Tensioner plate assembly
AG 175	28	4	MC8-29	M8 * 30 CSK Socket screw
AG 175	29	1	MC8-8	Auger
AG 175	30	1	MC8-9	Main bin
AG 175	31	4	MC8-34	M10 *35 bolt
AG 175	32	4	MC8-12	M10 plain washer
AG 175	33	4	MC8-27	M10 nyloc nut
AG 175	34	1	MC8-10	Aperture plate
AG 175	35	4	MC8-16	M8 * 20 Cup Square Bolt
AG 175	36	4	MC8-22	M8 plain washer
AG 175	37	4	MC8-23	M8 nyloc nut
AG 175	38	2	MC8-11	Adjuster plate
AG 175	39	4	MC8-34	M10 *35 bolt
AG 175	40	4	MC8-12	M10 washer
AG 175	41	4	MC8-27	M10 nyloc nut
AG 175	42	1	MC8-36	Valve block
AG 175	43	4	MC8-23	M8 nyloc nut
AG 175	44	4	MC8-22	M8 plain washer
AG 175	45	4	MC8-31	M8 x 130 mm Cap Bolt
AG 175	46	2	MC8-27	M10 nyloc nut
AG 175	47	2	MC8-12	M10 washer
AG 175	48	2	MC8-34	M10 *35 bolt
AG 175	49	1	MC8-33	Hydraulic motor (Auger) OMH 390
AG 175	50	2	MC8-12	Motor cover seal
AG 175	51	1	MC8-13	Motor cover
AG 175	52	2	MC8-14	M10 *25 H.T Setscrew (8.8)
AG 175	53	2	MC8-12	M10 washer
AG 175	54	2	MC8-27	M10 nyloc nut
AG 175	55	2	MC8-14	Side skirt (small) metal clamp
AG 175	56	4	MC8-27	M10 nyloc nut
AG 175	57	4	MC8-12	M10 plain washer
AG 175	58	2	MC8-8	Hanger bearing
AG 175	59	1	MC8-15	Bolt assembly rear
AG 175	60	12	MC8-14	M10 *25 H.T Setscrew (8.8)
AG 175	61	8	MC8-12	M10 washer
AG 175	62	8	MC8-27	M10 nyloc nut
AG 175	63	3	MC8-16	Brace
AG 175	64	6	MC8-14	M10 * 25 H.T Setscrew (8.8)
AG 175	65	1	MC8-19	Motor spacer
AG 175	66	3	MC8-23	M8 thin nyloc nut
AG 175	67	3	MC8-16	M8 * 25 H.T setscrew (8.8)
AG 175	68	18	MC8-23	M8 thin nyloc nut
AG 175	69	1	MC8-35	M10 * 55 H.T setscrew (8.8)
AG 175	70	2	MC8-9	M10 plain nut
AG 175	71	1	MC9-17	Conveyor belt
AG 175		2	MC8-37	Middle range pulley ratio (140-80)
AG 175		2	MC8-38	Highest range pulley ratio (140-60)