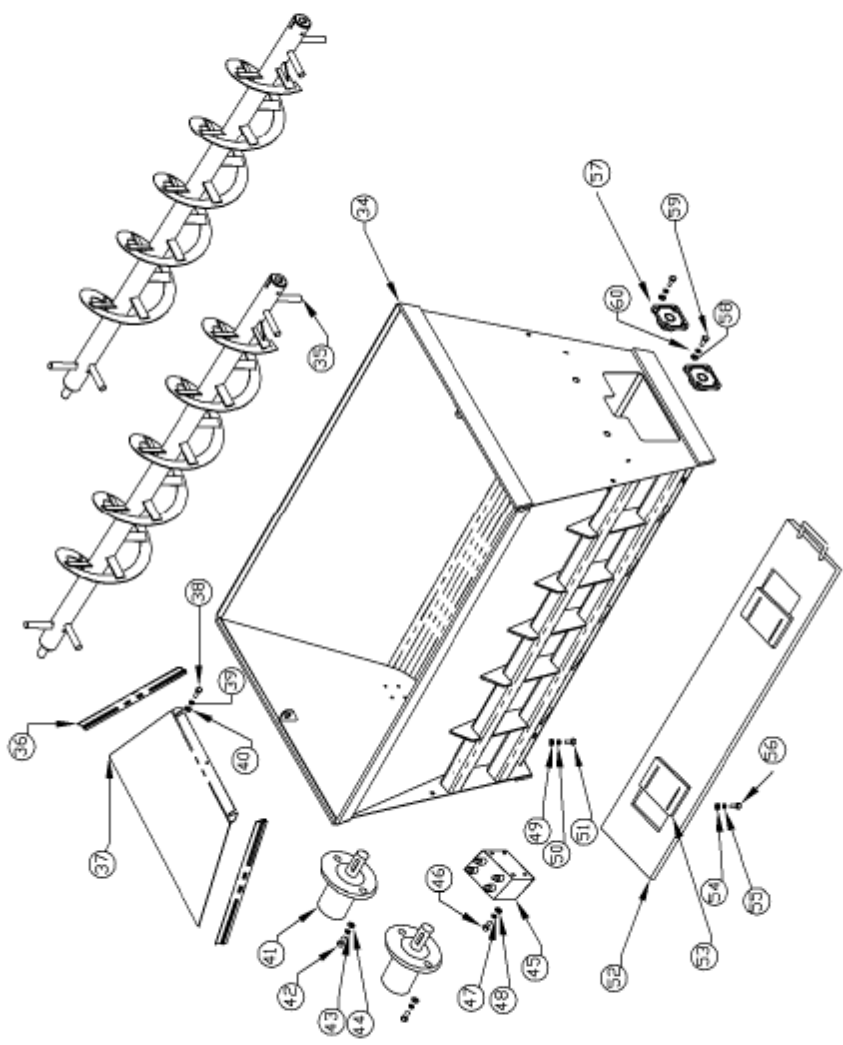


**AG 200
CONVEYOR**



**AG 200
MAIN BIN**

AG 200

Machine	ITEM NO.	QUANTITY	PART NO.	DESCRIPTION
AG 200	1	2	MC6-1	Tapered bush
AG 200	2	1	MC6-4	Tensioner plate assembly
AG 200	3	2	MC6-27	M10 nyloc nut
AG 200	4	2	MC6-2	Pulley
AG 200	5	1	MC6-15	M10*70 H.T Setscrew (8.8)
AG 200	6	3	MC9-1	Brace
AG 200	7	3	MC6-2	M8 *20 cup square bolt
AG 200	8	1	MC9-3	Conveyor belt
AG 200	9	1	MC9-4	Conveyor side assembly - Front
AG 200	10	3	MC9-5	Idler roller
AG 200	11	2	MC9-6	Head roller
AG 200	12	2	MC9-7	Side skirt (large) metal clamp
AG 200	13	1	MC6-15	M10 * 70 H.T Setscrew (8.8)
AG 200	14	2	MC9-8	Side skirt
AG 200	15	6	MC6-32	M10 spring washer
AG 200	16	2	MC9-9	Side skirt (small) metal clamp
AG 200	17	6	MC6-10	M20 plain nut
AG 200	18	18	MC6-14	M10 * 25 H.T setscrew (8.8)
AG 200	19	3	MC6-27	M10 nyloc nut
AG 200	20	3	MC6-12	M10 plain washer
AG 200	21	2	MC6-9	M10 plain nut
AG 200	22	22	MC6-23	M8 nyloc nut
AG 200	23	1	MC6-7	Flange bearing
AG 200	24	2	MC6-3	Threaded tension bar
AG 200	25	1	MC6-19	Motor spacer
AG 200	26	3	MC6-22	M8 plain washer
AG 200	27	2	MC6-8	Bearing hanger
AG 200	28	22	MC6-16	M8 * 25 H.T Setscrew (8.8)
AG 200	29	1	MC6-8	Flange bearing (conveyor)
AG 200	30	1	MC9-10	Conveyor side assembly - rear
AG 200	31	4	MC6-29	M10 * 30 cup square bolt
AG 200	32	4	MC6-29	M8 * 30 CSK socket screw
AG 200	33	1	MC6-18	Hydraulic motor - conveyor
AG 200	34	1	MC9-11	Main bin
AG 200	35	2	MC9-12	Auger (AG 200)
AG 200	36	2	MC9-13	Motor cover seal
AG 200	37	1	MC9-14	Motor cover
AG 200	38	2	MC6-14	M10 X 25mm bolt
AG 200	39	2	MC6-12	M10 washer
AG 200	40	2	MC6-27	M10 nyloc nut
AG 200	41	2	MC6-33	Auger hydraulic motor
AG 200	42	4	MC6-34	M10 x 35 mm bolt
AG 200	43	4	MC6-12	M10 washer
AG 200	44	4	MC6-27	M10 nyloc nut
AG 200	45	1	MC6-36	Valve
AG 200	46	4	MC6-31	M8 x 130 mm Cap Bolt
AG 200	47	4	MC6-22	M8 washer
AG 200	48	4	MC6-23	M8 nyloc nut
AG 200	49	4	MC6-27	M10 nyloc nut
AG 200	50	4	MC6-12	M10 washer
AG 200	51	4	MC6-34	M10 x 35 mm bolt
AG 200	52	1	MC9-15	Aperture plate
AG 200	53	2	MC9-16	Adjuster plate
AG 200	54	4	MC6-2	M8 * 20 Cup Square Bolt
AG 200	55	4	MC6-22	M8 plain washer
AG 200	56	4	MC6-23	M8 nyloc nut
AG 200	57	2	MC6-7	Flange bearing auger
AG 200	58	8	MC6-12	M10 plain washer
AG 200	59	8	MC6-34	M10 *35 bolt
AG 200	60	8	MC6-27	M10 nyloc nut
AG 200		2	MC6-37	Middle range pulley ratio (140-80)
AG 200		2	MC6-38	Highest range pulley ratio (140-60)
AG 200		1	MC9-17	Users manual