

AG EasiScrape

Garnett Farms Engineering Ltd, Clay bank Farm, Allstock, Nr Knutsford, Cheshire, WA16 9NE

Tel: 00 44 1565 722922 Fax: 00 44 1565 723303

Email: info@agdispenser.co.uk

Product Manual and Specifications



AG EasiScrape conforms to the Essential Health and Safety Requirements of EEC Directive 89/392/EEC, as amended by 91/368/EEC, 93/44/EEC, and 93/68/EEC.

To effect the correct application of the safety requirements stated in the EEC Directives, the following standards and / or technical specification have been used:

- **BS EN 292-1: 1991** Safety of machinery – Basic concepts, general principles for design – Basic terminology, methodology.
- **BS EN 292-2: 1991** Safety of machinery – Basic concepts, general principles for design – Technical principles and specification.
- **BS EN 294: 1992** Safety of machinery – Safety distances to prevent danger zones being reached by the upper limbs.
- **BS 5401: 1990** Guide to information content and presentation of operator's manuals provided for tractors and machinery for agriculture and forestry.
- **BS EN ISO 4254-1:2005** - Agricultural machinery - Safety and General Requirements.

Serial number _____

Date _____

Issue no 2- 03/07/2007

Part no – MC5-05-1

AG EasiScrape

IMPORTANT: - This check list should be used in conjunction with the operator's manual.
 Before starting, removing any parts packed, read the operators manual.

PRE-DELIVERY LIST, TO BE COMPLETED BY THE MANUFACTURER AND DEALER MANUFACTURER P-D-I

1	Signs and safety stickers fitted	
2	Overall machine in good condition (i.e. free from rust and burrs)	
3	Serial plate holes on frame and serial plate fitted	
4	Nuts and bolts checked before fitting to create	
5	Side doors have sufficient clearance from the front and rear doors rubbers.	
6	Ensure side doors have sufficient movement up and down	
7	Spring and spring guides fitted	
8	Rubbers undamaged	
9	Rubber holding plates tight	
10	Chains all connected in same hole	
11	Correct number of links in the chain	
12	Lift pegs fitted and secure (if necessary)	
13	A frame latch placed in the correct direction	
14	Main frame pivot nuts are tight	

Manufacturer P-D-I officer _____ Date _____

DELIVERY INSPECTION (DEALER)

1	Machine delivered without transport damage	
2	Ensure all pictograms are in place	
3	Machine delivered as per specification by the dealer c/w manual	

PRE-INSTALLATION INSPECTION (DEALER)

1	Check all nuts and bolts	
2	Check all rubbers are free from damage	
3	Ensure all the chains are connected	
4	Ensure all chains have the same number of links	
5	Sufficient clearance between side doors and main door rubbers	
6	Movement of side doors, relatively easy	
7	Machine is free from burrs and rust	
8	Instruct and ensure the operator fully understands how to use machine	

This machine must not be released for delivery until the inspector has performed the pre-delivery inspection in accordance with the above requirements.

Dealer Branch _____ Date _____

Dealer P-D-I inspector _____

AG thanks you for your purchase and we wish you safe and productive use of this machine.

Specification

Model AG EasiScrape	Capacity	Weight	Width	Depth	Height
180	0.74 c/m	360 kg	180 cm	90 cm	46 cm
200	0.83 c/m	395 kg	200 cm	90 cm	46 cm
230	1.01 c/m	420 kg	230 cm	90 cm	46 cm

Safety rules and Pictogram / label identification

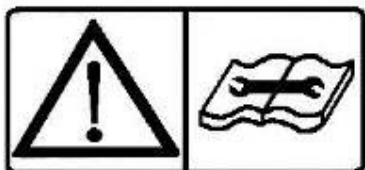
Wherever possible, warning pictograms (labels with no words), or warning labels are used on the machine near the area of danger and / or in the product manual near the relevant instructions.



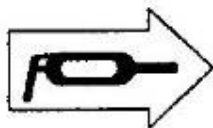
Pictogram to indicate 'Alert warning'.



Pictogram to indicate 'Lifting Hook location'



Pictogram to indicate 'Read Product Manual'

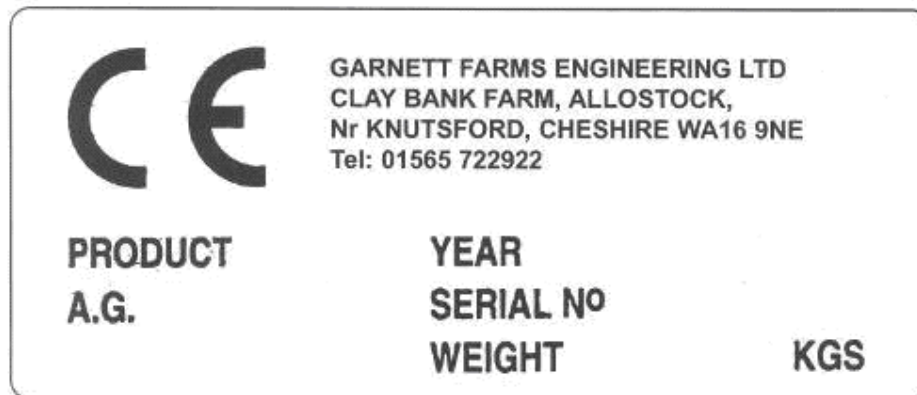


Pictogram to indicate 'Grease Lubrication points'

1. Always comply with safety rules as set out in the pictograms, and detailed in this product manual.
2. No bystanders allowed in the working area.
3. Before undertaking any maintenance, the tractor engine must be stopped, the hand brake applied, and all residual hydraulic pressure released.
4. Only the operator must operate the AG EasiScape and must remain in the cab during the complete working cycle.
5. Do not attempt to use the AG EasiScape if any of the safety guards have been removed, are damaged or missing.

Identification of the machine

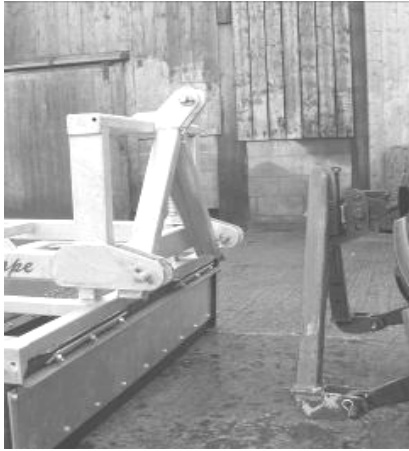
The AG EasiScape is identified by the Serial Plate, Showing – Product, Year of Manufacture, Serial number and Shipping Weight.



1. Before fitting the AG Easiscape to the prime mover, check that the combined weight of the AG Easiscape and the heaviest load does not exceed the manufacturer's recommended safe loading of the front and rear axle, wheels and tyres.
2. Ensure that the combined load is within the lifting capacity of the prime mover.
3. If the AG Easiscape is mounted on a 3 point linkage then also ensure that there is enough counter balance from the prime mover to compensate the load without exceeding the load capacity of the prime mover.

Fitting / Attaching AG EasiScrapes

The EasiScrape can be attached using either the 3 point linkage or an A-Frame



Fig, 1

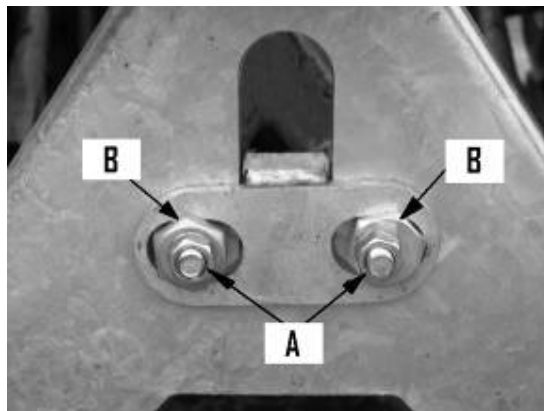


Fig, 2

Ensure the AG EasiScrape is on level ground and in a stable condition before attaching.



The A-Frame must be of a type that is recommended by the Manufacturer.



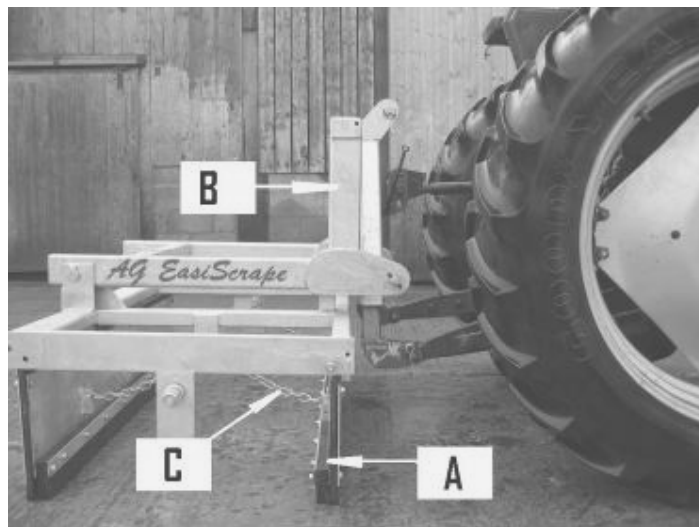
Fig, 3

A-frames must be fitted correctly; the latch can be adjusted to allow a correct fit with the A-frame. Fig 3

1. Loosen nuts 'A'
2. Eccentric nuts 'B' when turned will alter the height of the main latch
3. After setting the latch to the correct height, re-tighten nuts A

- A. Remove the hitch pins, back up the tractor and attach the lower link arms of the tractor to the lower attachment points on the 3 point frame using the pins supplied, then secure with linch pins.
- B. Attach the tractor top link to the 3 Point frame and secure by using the pin and linch pin.
- C. Adjust the tractor link arm stabilisers so that the AG EasiScrape is held central and there is no undue lateral movement.
- D. If fitted to a loader ensure the correct mounting brackets are fitted and the locking pins are secured.

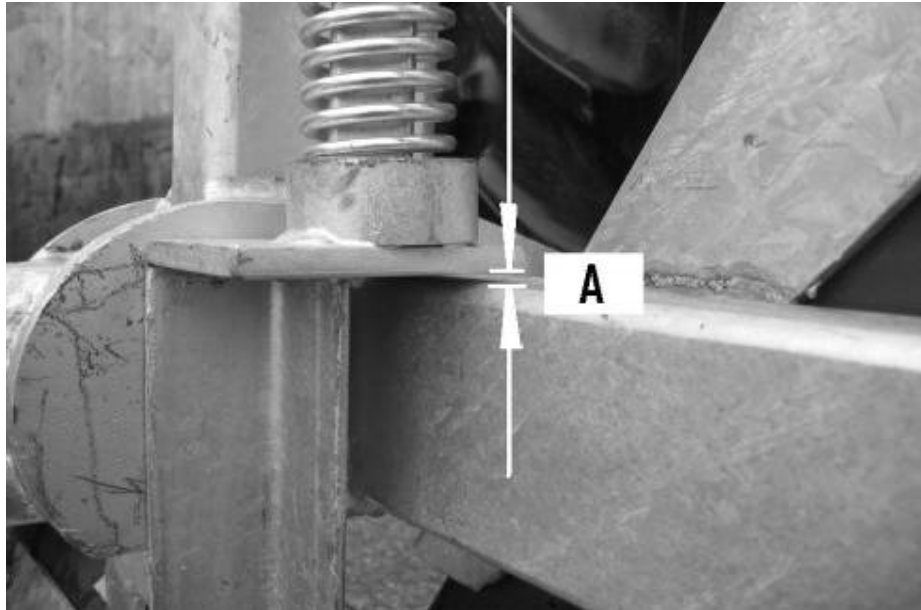
OPERATION AND SAFE USE OF THE AG EASISCRAPE



When the machine is fitted to the Prime Mover, shown in Fig, 4;

1. Ensure the Vertical Frame 'B' is set at 90 Degrees to the floor. Adjusted via the Top Link. **If this is set incorrectly, excessive wear will occur on the Rubbers and Skids!**
2. The doors must be adjusted, using the chains 'C' to set them to 90 Degrees to the floor. **Fig4. (Side doors, removed for illustration only)**

-Height settings-



Fig, 5

When setting the working height of the AG EasiScrape, the operator must use the 'Position Control' lever

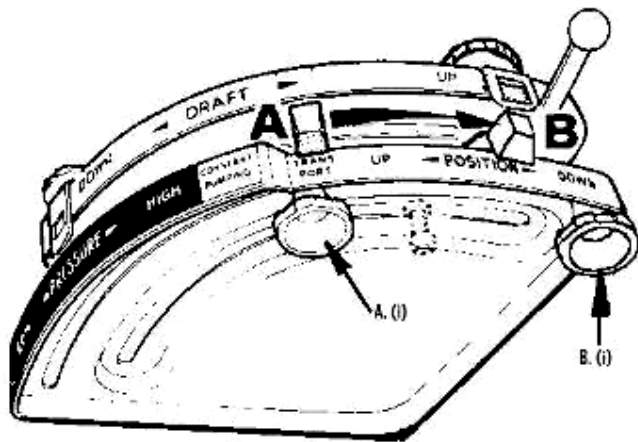
When using the AG EasiScrape the head-stock springs allow the unit to float along any uneven surfaces, giving an unbeatable scraping finish. On operating the scraper forward and backwards, the springs will also flex giving that constant floor contact.



Fig 5. It is essential that during working the AG EasiScrape, the headstock float is kept to approximately 5-10mm Shown in Fig 5 'A', This is achieved using the Position control on the tractor fig 6

Failure to do this will result in -

- a. Increase wear in rubbers**
- b. Excessive tension on Chains**
- c. Excessive wear on skids**
- d. Excessive splashing of material**
- e. Excessive noise.**



Position Control for float

- Move the lever towards B (Scraping)
- When the required float has been reached 5-10mm set the stopper B (i) in line with the lever.
- Move the lever towards A (Transport)
- When the required height has been reached set stopper A(i)

N.B It is important to maintain as little float as possible to prolong the life of the AG Easiscrape.

Fig, 6

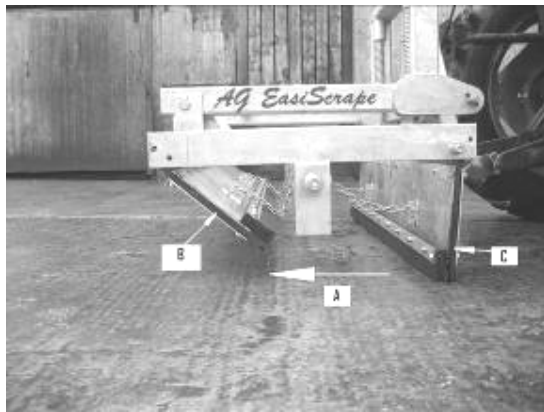


Fig 6 shows the AG Easiscrape (without sides – Illustration purpose only) being used in the reverse direction.

NB Door (C), which is in contact with the ground, is at 90 degrees.

- Direction of travel from right to left. The slurry/muck lifts the first door (B) allowing material to enter the scraper.
- The material will then circulate in the anticlockwise direction, filling the AG EasiScrape Camber.

NB. SPEED OF 6mph + IS REQUIRED TO FILL THE CHAMBER OF THE AG EASISCAPE.

- Once the direction of travel stops. Door B will shut, therefore holding the material in the chamber.
- If forward travel begins, door C will lift and more material can be collected.

MAINTENANCE AND ADJUSTMENTS

DAILY MAINTENANCE



CARE:

Ensure that the immediate area is clear from personnel.
Stop the tractor engine and secure the tractor hand brake

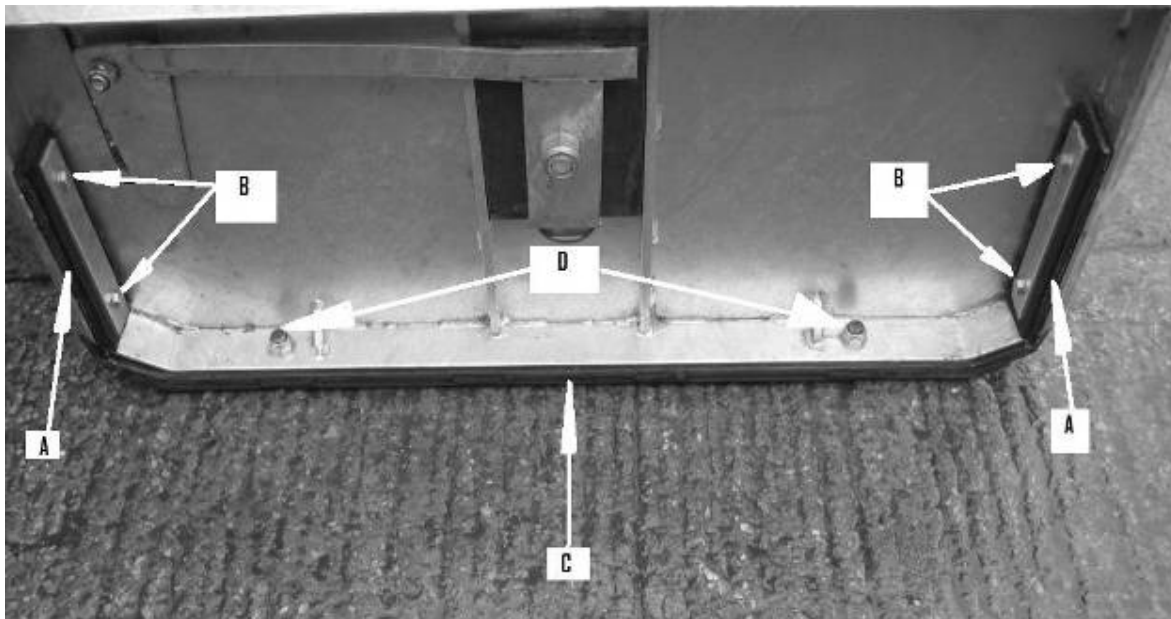
ENSURE MACHINE IS PARKED ON LEVEL GROUND BEFORE WORK COMMENCES.

1. Check that all frame nuts and bolts are tight.
2. Check all rubbers for wear
3. Check skids for wear
4. Check machine vertical Frame, front and rear doors are at 90 Degrees to the floor.
5. Check for breakage and condition.

REPLACEMENT OF WEARING PARTS

AG recommends that any major work be carried out by your *AG* dealer.
If work is attempted by unqualified engineers, no liability will be accepted for any subsequent failure.
Also remember your **safety** could be at risk.

Rubbers / skids:

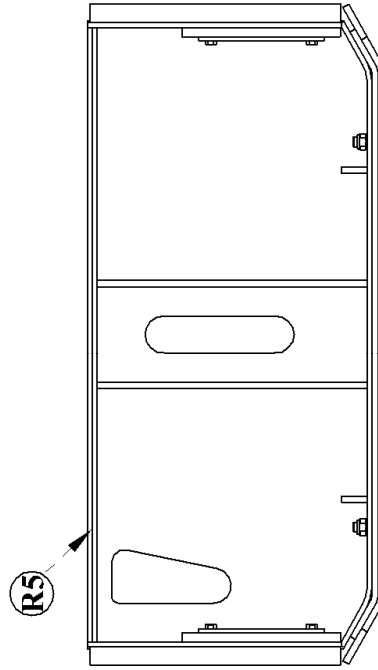
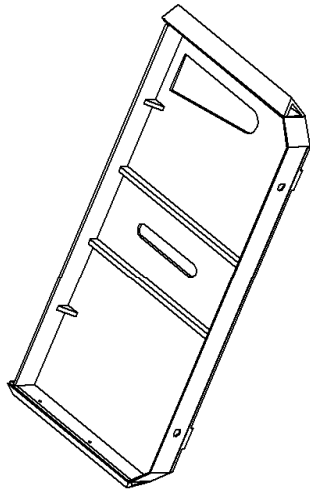


Skids: Skids are easily replaced, remove bolts (D) and the skid will remove by gently tapping with a hammer. Replace with new skid and tighten bolts.

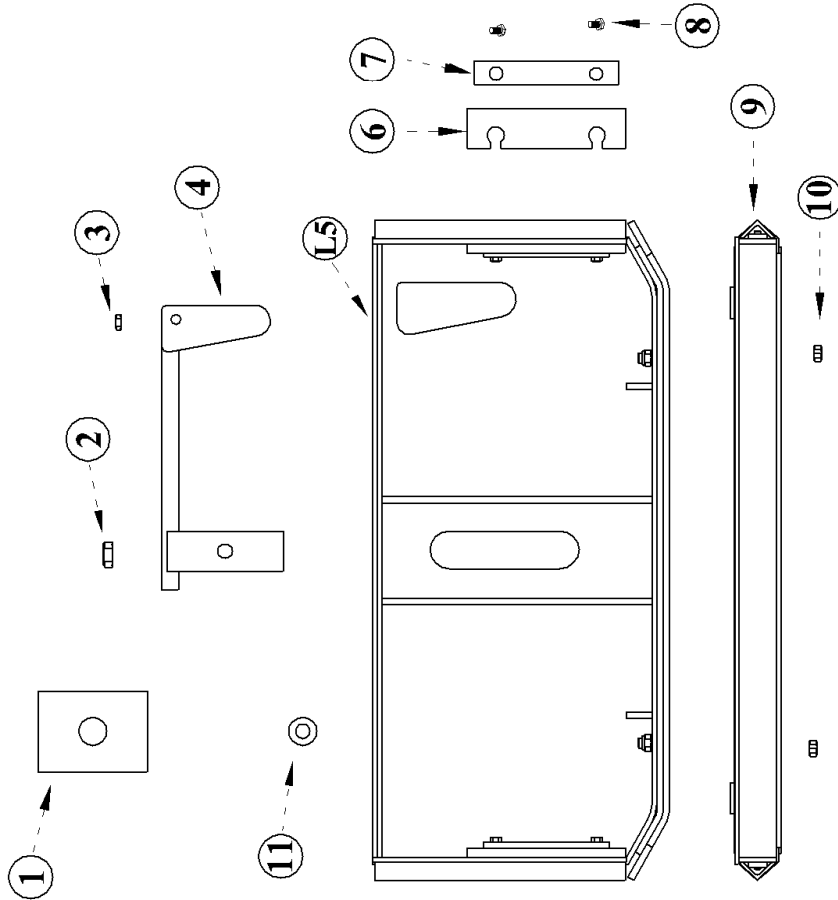
NOTE: The use of any other Skid, not supplied by *AG* will invalidate the Warranty and prevent satisfactory operation of the machine.

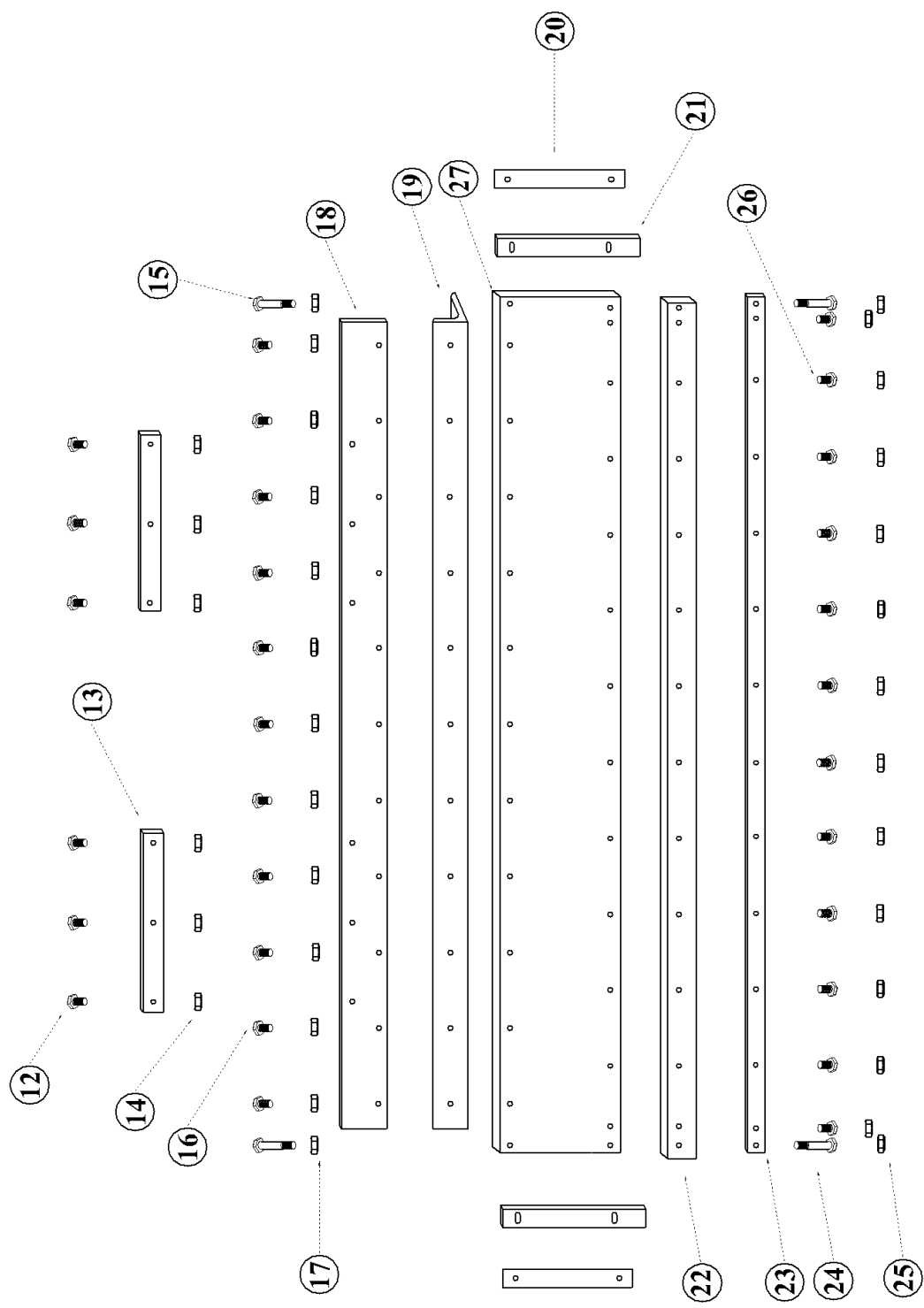
Rubbers: The rubbers on the side plates can be adjusted for cleaning walls and cubical heel-stones, slacken nuts (B) and extend rubbers so they are proud of the metal sides.

NB FAILURE TO EXTEND AND REPLACE THE RUBBERS WHEN REQUIRED WILL RESULT IN GALVANIZED FRAME WEAR. *AG* WILL NOT BE HELD RESPONSIBLE FOR THIS NEGLIGENCE.



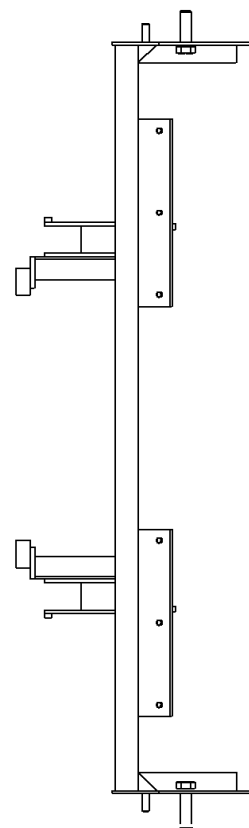
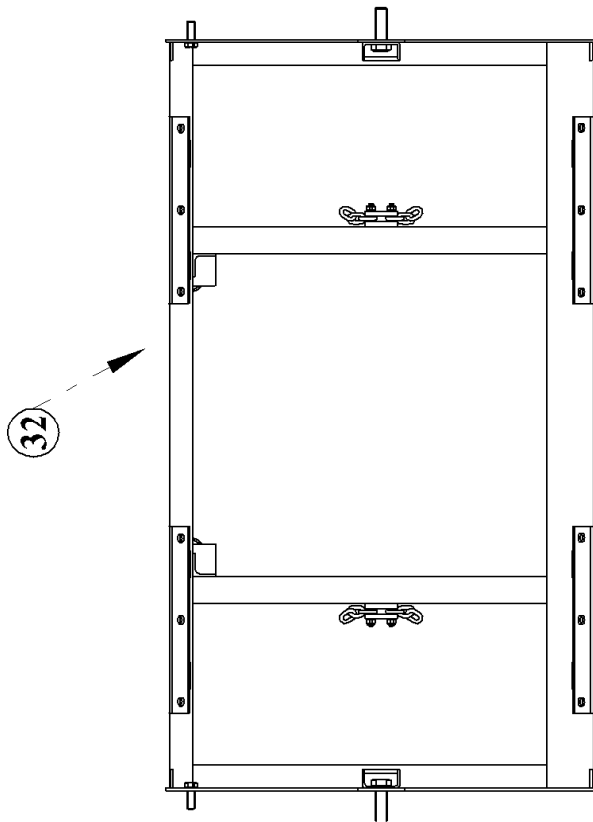
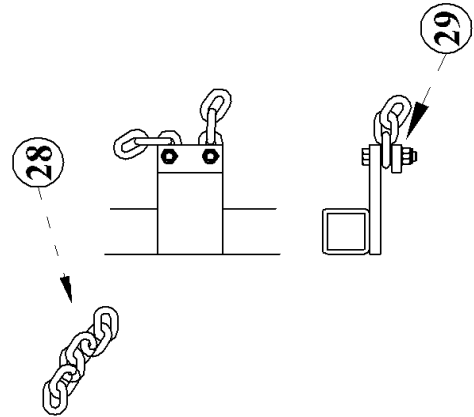
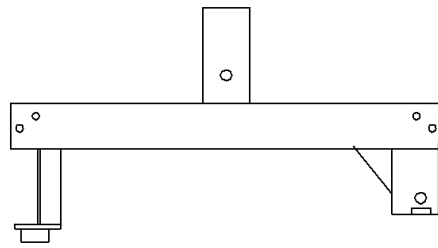
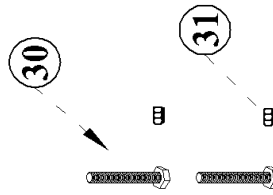
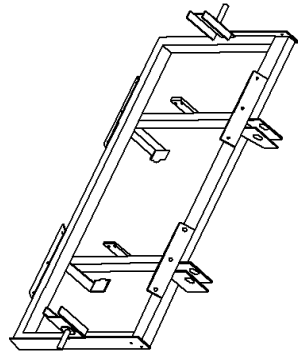
**AG EASISCRAPE
SIDE DOOR**



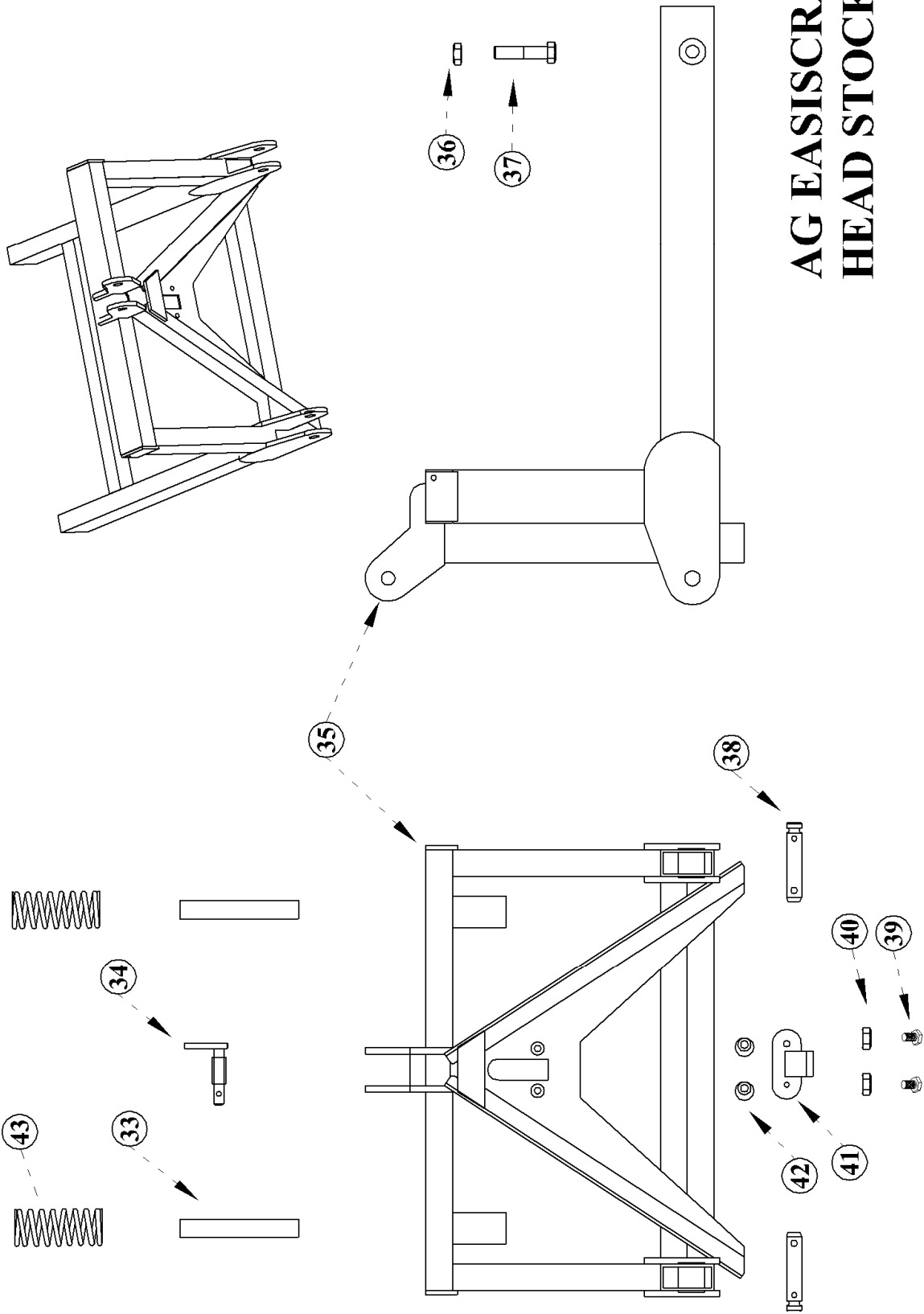


**AG EASISGRAPE
FRONT/REAR DOOR**

**AG EASISCRAPE
MAIN FRAME**



AG EASISCRAPE HEAD STOCK



Garnett Farms Engineering Limited

Clay Bank Farm, Allostock, Nr Knutsford, Cheshire WA16 9NE Tel: 01565 722 922 Fax: 01565 723303

Machine	ITEM NO.	QUANTITY REQUIRED	PART NO.	DESCRIPTION
EASISRAPE	1	2	MC5-01-1	PIVOT DOOR SLIDER ASSEMBLY
EASISRAPE	2	2	MC5-01-2	M24 NUT
EASISRAPE	3	2	MC5-01-3	M16 NUT
EASISRAPE	4	2	MC5-01-4	PIVOT DOOR SLIDER RETAINER
EASISRAPE	L5	1	MC5-01-5	PIVOT DOOR LEFT SIDE
EASISRAPE	R5	1	MC5-01-12	PIVOT DOOR RIGHT SIDE
EASISRAPE	6	4	MC5-01-6	VERTICAL EDGING RUBBERS
EASISRAPE	7	4	MC5-01-7	VERTICAL EDGING RUBBERS CLAMPING PLATE
EASISRAPE	8	8	MC5-01-8	M10* 45mm BOLT
EASISRAPE	9	2	MC5-01-9	SKID
EASISRAPE	10	4	MC5-01-10	M12 NUT
EASISRAPE	11	2	MC5-01-11	SLIDER BLOCK BOSS
EASISRAPE	12	12	MC5-02-1	M10* 35mm BOLT
EASISRAPE	13	4	MC5-02-2	HINGE CLAMPING PLATE
EASISRAPE	14	12	MC5-02-3	M10 NUT
EASISRAPE	15	8	MC5-02-4	M10* 50mm NUT
EASISRAPE	16	9	MC5-02-1	M10* 35mm BOLT EASISRAPE 180/200
EASISRAPE	16	11	MC5-02-1	M10* 35mm BOLT EASISRAPE 220
EASISRAPE	17	11	MC5-02-3	M10 NUT EASISRAPE 180/200
EASISRAPE	17	13	MC5-02-3	M10 NUT EASISRAPE 220
EASISRAPE	18	2	MC5-02-4	FRONT/REAR SWING DOOR HINGE 180
EASISRAPE	18	2	MC5-02-5	FRONT/REAR SWING DOOR HINGE 200
EASISRAPE	18	2	MC5-02-6	FRONT/REAR SWING DOOR HINGE 220
EASISRAPE	19	2	MC5-02-7	ANGLED HINGE CLAMP 180
EASISRAPE	19	2	MC5-02-8	ANGLED HINGE CLAMP 200
EASISRAPE	19	2	MC5-02-9	ANGLED HINGE CLAMP 220
EASISRAPE	20	4	MC5-02-10	CLAMPING PLATE FOR VERTICAL RUBBERS
EASISRAPE	21	4	MC5-02-11	VERTIAL RUBBERS FOR SWING DOORS
EASISRAPE	22	4	MC5-02-12	PU BLADE 180/200/220
EASISRAPE	23	2	MC5-02-15	CLAMP FOR PU BLADE 180
EASISRAPE	23	2	MC5-02-16	CLAMP FOR PU BLADE 200
EASISRAPE	23	2	MC5-02-17	CLAMP FOR PU BLADE 220
EASISRAPE	24	4	MC5-02-4	M10* 50mm BOLT
EASISRAPE	25	11	MC5-02-3	M10 NUT EASISRAPE 180/200
EASISRAPE	25	13	MC5-02-3	M10 NUT EASISRAPE 220
EASISRAPE	26	9	MC5-02-1	M10* 35mm BOLT 180
EASISRAPE	26	9	MC5-02-1	M10* 35mm BOLT 200
EASISRAPE	26	11	MC5-02-1	M10* 35mm BOLT 220
EASISRAPE	27	2	MC5-02-18	SWING DOOR 180
EASISRAPE	27	2	MC5-02-19	SWING DOOR 200
EASISRAPE	27	2	MC5-02-20	SWING DOOR 220
EASISRAPE	28	4	MC5-03-1	SWING DOOR CHAINS 180
EASISRAPE	29	2	MC5-03-2	CHAIN CLAMPING PLATE
EASISRAPE	30	4	MC5-02-4	M10* 50mm BOLT
EASISRAPE	31	4	MC5-02-3	M10 NUT
EASISRAPE	32	1	MC5-03-4	MAINFRAME
EASISRAPE	33	2	MC5-04-1	HEADSTOCK SPRING GUIDERS
EASISRAPE	34	1	MC5-04-2	TOP LINK PIN
EASISRAPE	35	1	MC5-04-3	HEADSTOCK
EASISRAPE	36	2	MC5-01-2	M24 NUT
EASISRAPE	37	2	MC5-04-4	M24 BOLT
EASISRAPE	38	2	MC5-04-5	LOWER LINK PIN
EASISRAPE	39	2	MC5-04-6	M12 SOCKET COUNTERSUNK BOLTS
EASISRAPE	40	2	MC5-01-10	M12 NUT
EASISRAPE	41	1	MC5-04-7	A-FRAME ADJUSTER PLATE
EASISRAPE	42	2	MC5-04-8	ECCENTRIC ADJUSTER SLOTS
EASISRAPE	43	2	MC5-04-9	SPRING
		1	MC5-05-1	USERS MANUAL

Garnett Farms Engineering Limited

Clay Bank Farm, Allostock, Nr Knutsford, Cheshire, WA16 9NE

Tel: 01565 722922 – Fax: 01565 723303

WARRANTY REGISTRATION FORM

Date of Purchase:	
Purchaser's Name:	
Address:	
Dealer's Name:	
Address:	
Machine Type:	AG
Model:	
Serial No:	

GARNETT FARMS ENGINEERING LTD POLICY NOTE

G.F.E. IS A CONTINUOUS IMPROVEMENT. WE RESERVE THE RIGHT TO CHANGE PRICES OR SPECIFICATIONS OF EQUIPMENT AT ANY TIME WITHOUT NOTICE. ORDERS ARE ACCEPTED SUBJECT TO OUR STANDARD TERMS AND CONDITIONS. ALL WEIGHTS AND MEASURES SHOWN IN ANY OF OUR BROCHURES ARE APPROXIMATE.

WARRANTY

AS PART OF THE *AG* DISPENSERS AFTER SALES SUPPORT, PLEASE CONTACT AT ANY TIME

A COPY OF WHICH ARE AVAILABLE ON REQUEST.