



*AG Products*

**— AG EASISCRAP —**  
**OPERATION MANUAL**

*Released April 2024*

[www.ag-products.co.uk](http://www.ag-products.co.uk)

+44 (0) 1565 722922

# AG EasiScrape

This check list should be used in conjunction with the operator’s manual.  
**IMPORTANT:** - Before starting, removing any parts packed, read the operators manual.

**PRE – DELIVERY LIST, TO BE COMPLETED BY THE MANUFACTURER AND DEALER MANUFACTURER P-D-I**

1	Signs and safety stickers fitted	
2	Overall machine in good condition (i.e. free from rust and burrs)	
3	Serial plate holes on frame and serial plate fitted	
4	Nuts and bolts checked before fitting to create	
5	Side doors have sufficient clearance from the front and rear doors rubbers.	
6	Ensure side doors have sufficient movement up and down	
7	Spring and spring guides fitted	
8	Rubbers undamaged	
9	Rubber holding plates tight	
10	Chains all connected in same hole	
11	Correct number of links in the chain	
12	Lift pegs fitted and secure (if necessary)	
13	A frame latch placed in the correct direction	
14	Main frame pivot nuts are tight	

Manufacturer P-D-I officer \_\_\_\_\_ Date \_\_\_\_\_

**DELIVERY INSPECTION (DEALER)**

1	Machine delivered without transport damage	
2	Ensure all pictograms are in place	
3	Machine delivered as per specification by the dealer c/w manual	

**PRE-INSTALLATION INSPECTION (DEALER)**

1	Check all nuts and bolts	
2	Check all rubbers are free from damage	
3	Ensure all the chains are connected	
4	Ensure all chains have the same number of links	
5	Sufficient clearance between side doors and main door rubbers	
6	Movement of side doors, relatively easy	
7	Machine is free from burrs and rust	
8	Instruct and ensure the operator fully understands how to use machine	

This machine must not be released for delivery until the inspector has performed the pre-delivery inspection in accordance with the above requirements.

Dealer Branch \_\_\_\_\_ Date \_\_\_\_\_

Dealer P-D-I inspector \_\_\_\_\_

**AG** thanks you for your purchase and we wish you safe and productive use of this machine.

## Specification-

Model AG EasiScrape	Capacity	Weight	Width	Depth	Height
180	0.74 c/m	360 kg	180 cm	90 cm	46 cm
200	0.83 c/m	395 kg	200 cm	90 cm	46 cm
220	1.01 c/m	420 kg	230 cm	90 cm	46 cm

## Safety rules and Pictogram / label identification

Wherever possible, warning pictograms (labels with no words), or warning labels are used on the machine near the area of danger and / or in the product manual near the relevant instructions.



Pictogram to indicate 'Alert warning'.



Pictogram to indicate 'Lifting Hook location'



Pictogram to indicate 'Read Product Manual'

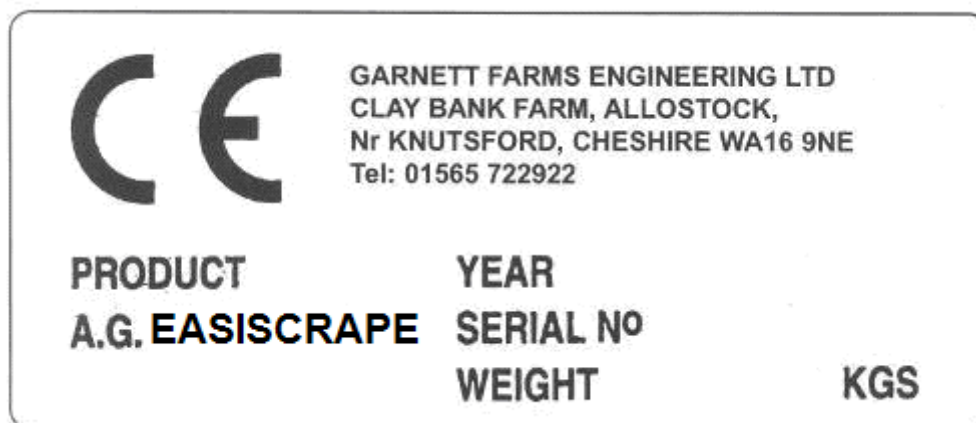


Pictogram to indicate 'Grease Lubrication points'

1. Always comply with safety rules as set out in the pictograms, and detailed in this product manual.
2. No Bystanders allowed in the working area.
3. Whatever the type of maintenance that needs to be done on the EasiScrape, the tractor Engine must be stopped, the hand brake applied, and all residual hydraulic pressure released.
4. Only the operator must operate the AG EasiScrape and must remain in the cab during the complete working cycle.
5. Do not attempt to use the AG EasiScrape if any of the Safety guards have been removed, are damaged or missing.

## Identification of the machine

The AG EasiScrape is identified by the Serial Plate, Showing – Product, Year of Manufacture, Serial number and Shipping Weight.

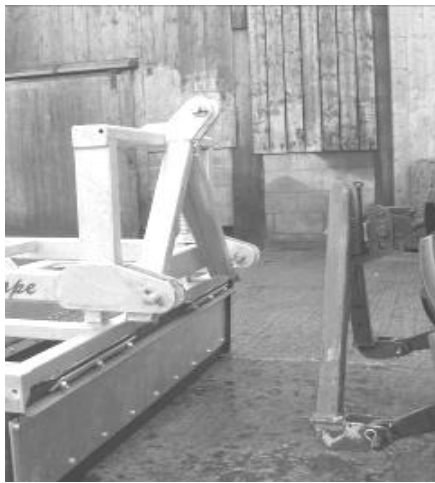


**WARNING. THE OPERATOR IS RESPONSIBLE FOR CHECKING THAT THE PRIME MOVER AND SCRAPER ARE TOGETHER A SAFE AND STABLE WORKING UNIT UNDER ALL EXPECTED WORKING CONDITIONS.**

Before fitting the AG EasiScrape to the prime mover vehicle, check that the combined weight of the EasiScrape does not exceed the manufacturer's recommended safe loading of the front and rear axle, wheels or tyres. If the EasiScrape is mounted on the 3 point linkage or A-frame, then also ensure that there is enough counter balance on the front of the prime mover to compensate the load without exceeding the load capacity of the prime mover.

## Fitting / Attaching EasiScrapes

The EasiScrape can be attached using either the 3 point linkage or an A-Frame



Fig, 1

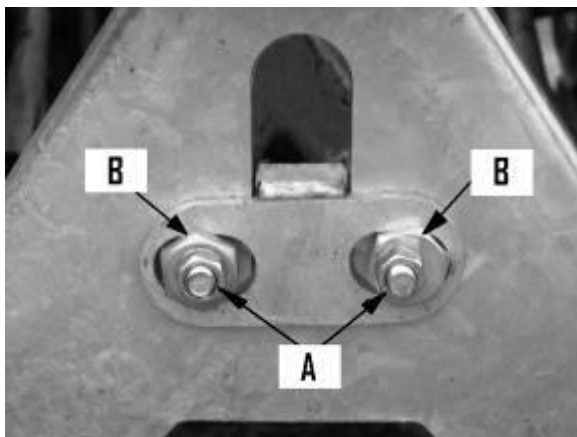


Fig, 2

Ensure the EasiScrape is on Level Ground and in a stable condition before attaching.



The A-Frame must be of a type that is recommended by the Manufacture.



Fig, 3

A-frames must be fitted correctly; the latch can be adjusted to allow a correct fit with the A-frame. Fig 3

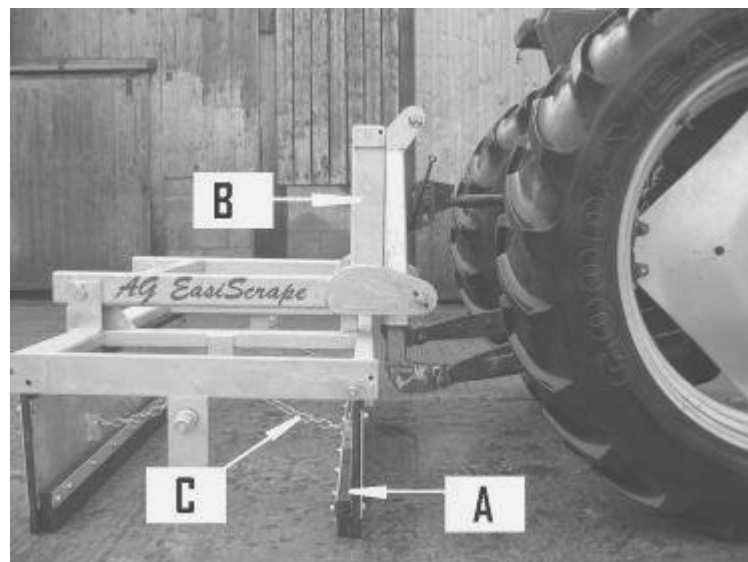
1. Loosen nuts 'A'
2. Eccentric nuts 'B' when turned will alter the height of the main latch
3. After setting the latch to the correct height, re-tighten nuts A



**IMPORTANT!** Ensure that the immediate area is clear of spectators.  
The operator must stay in the Prime Mover during work.

- A. Remove the hitch pins, back up the tractor and attach the lower link arms of the Tractor to the lower attachment points on the 3 point frame using the pins supplied, then secure with linch pins.
- B. Attach the tractor top link to the 3 Point frame and secure by using the pin and linch pin.
- C. Adjust the tractor link arm stabilisers so that the AG EasiScrape is held central and there is no undue lateral movement.
- D. If fitted to a loader ensure the correct mounting brackets are fitted and the locking pins are secured.

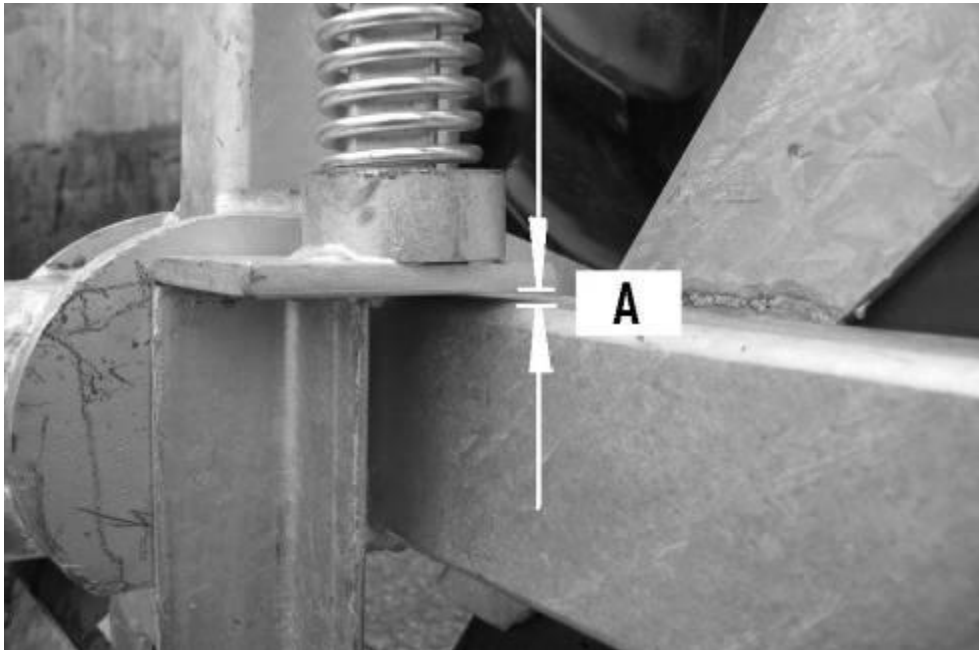
## OPERATION AND SAFE USE OF THE AG EASISCAPE



When the machine is fitted to the Prime Mover, shown in Fig. 4;

1. Ensure the Vertical Frame 'B' is set at 90 Degrees to the floor. Adjusted via the Top Link. **If this is set, incorrectly excessive wear will occur on the Rubbers and Skids!**
2. The doors must be adjusted, using the chains 'C' to set them to 90 Degrees to the floor. **Fig4. (Side doors, removed for illustration only)**

**-Height settings-**



Fig, 5

When setting the working height of the EasiScrape, the operator must use the 'Position Control' lever.

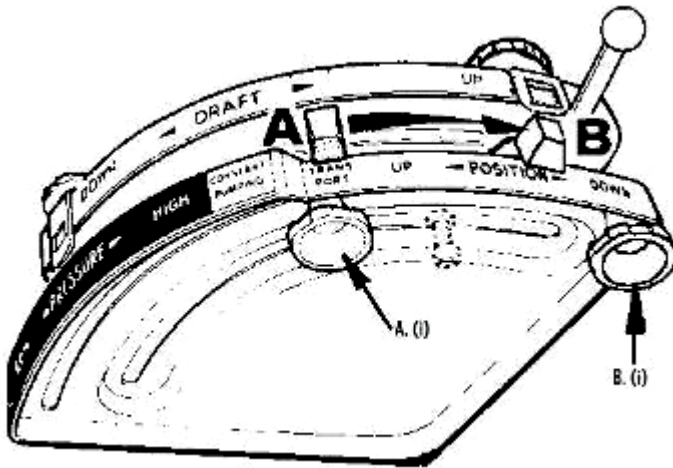
When using the EasiScrape the head-stock springs allow the unit to float along any uneven surfaces, giving an unbeatable scraping finish. On operating the scraper forward and rearwards, the springs will also flex giving that constant floor contact.



**Fig 5. It is essential that during working the AG EasiScrape, the headstock float is kept to approximately 5-10mm Shown in Fig 5 'A', This is achieved using the Position control on the tractor fig 6**

**Failure to do this will result in -**

- a. Increase wear in rubbers
- b. Excessive tension on Chains
- c. Excessive wear on skids
- d. Excessive splashing of material
- e. Excessive noise.



**Position Control for float**

- Move the lever towards B (Scraping )
- When the required float has been reached 5-10mm set the stopper B (i) in line with the lever.
- Move the lever towards A (Transport )
- When the required height has been reached, set stopper A (i)

**N.B It is important to maintain as little float as possible to prolong the life of the EasiScrape.**

**Fig, 6**

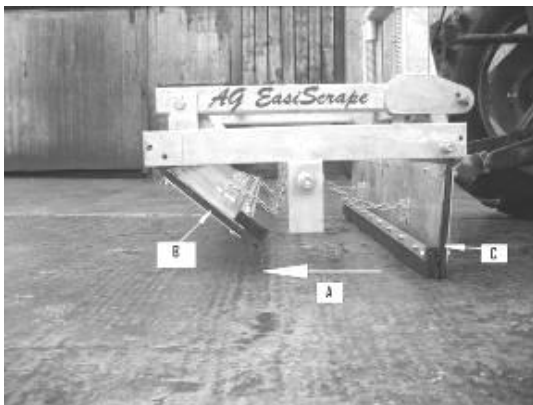


Fig 6 shows the EasiScrape (without sides – for illustration purpose only) being used in the reverse direction.

**NB Door (C), which is in contact with the ground, is at 90 degrees.**

- Direction of travel from right to left. The slurry/muck lifts the first door (B) allowing material to enter the scraper.
- The material will then circulate in the anticlockwise direction, filling the EasiScrape Camber.

**NB. SPEED OF 6mph + IS REQUIRED TO FILL THE CHAMBER OF THE EASISCAPE.**

- Once the direction of travel stops. Door B will shut, therefore holding the material in the chamber.
- If forward travel begins, door C will lift and more material can be collected.



## MAINTENANCE AND ADJUSTMENTS

### DAILY MAINTENANCE



**CARE:** Ensure that the immediate area is clear from personnel.  
Stop the tractor engine and secure the tractor hand brake

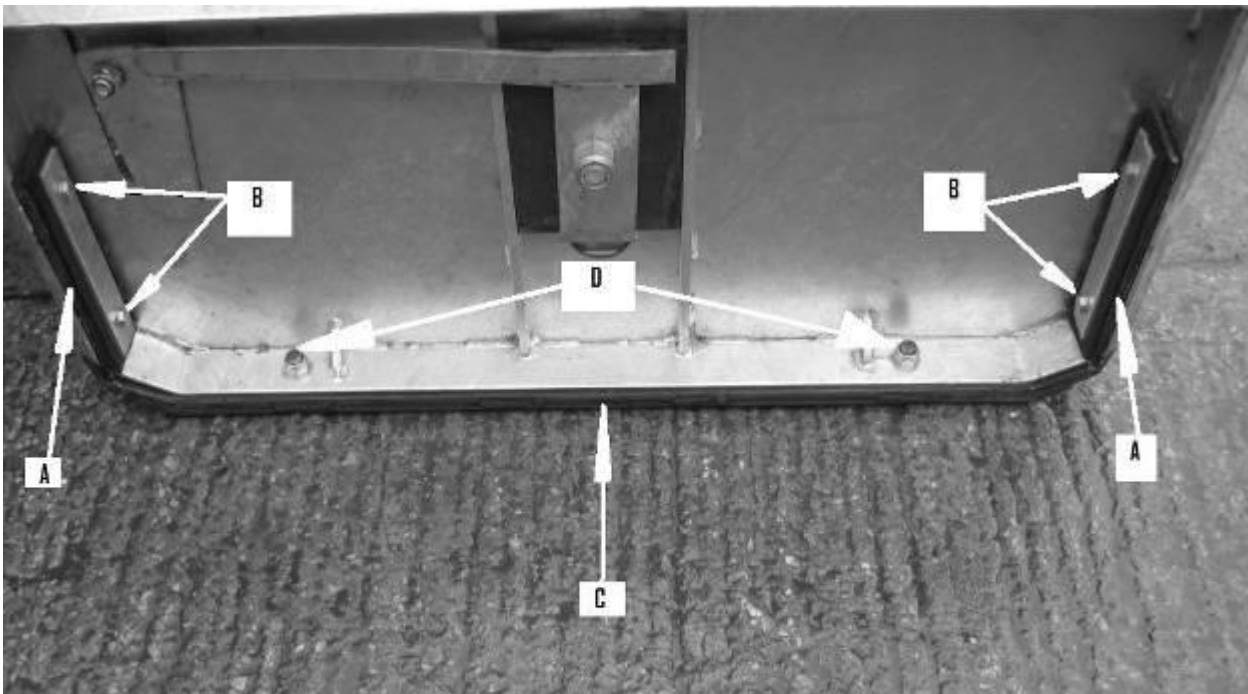
#### **ENSURE MACHINE IS PARKED ON LEVEL GROUND BEFORE WORK COMMENCES.**

1. Check that all frame nuts and bolts are tight.
2. Check all rubbers for wear.
3. Check skids for wear.
4. Check machine vertical Frame, front and rear doors are at 90 Degrees to the floor.
5. Check for breakage and condition.

## REPLACEMENT OF WEARING PARTS

**AG** recommends that any major work be carried out by your **AG** dealer. If work is attempted by unqualified engineers, no liability will be accepted for any subsequent failure. Also remember your **safety** could be at risk.

### Rubbers / skids:



**Skids:** Skids are easily replaced, remove bolts (D) and the skid will remove by gently tapping with a hammer. Replace with new skid and tighten bolts.

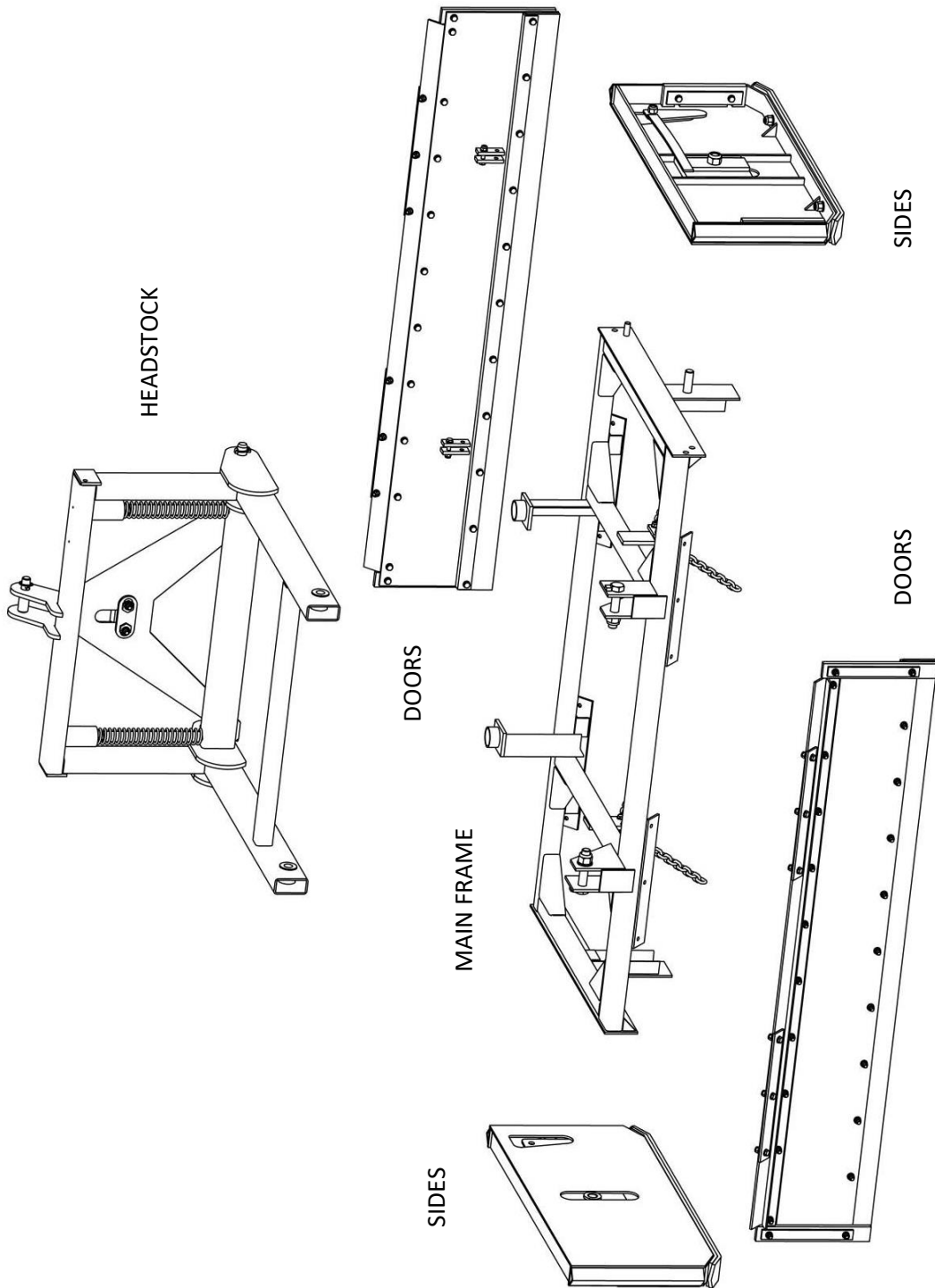
**NOTE:** The use of any other Skid, not supplied by AG will invalidate the Warranty and Prevent satisfactory operation of the machine.

**Rubbers:** The rubbers on the side plates can be adjusted for cleaning walls and cubical heel-stones, slacken nuts (B) and extend rubbers so they are proud of the metal sides.

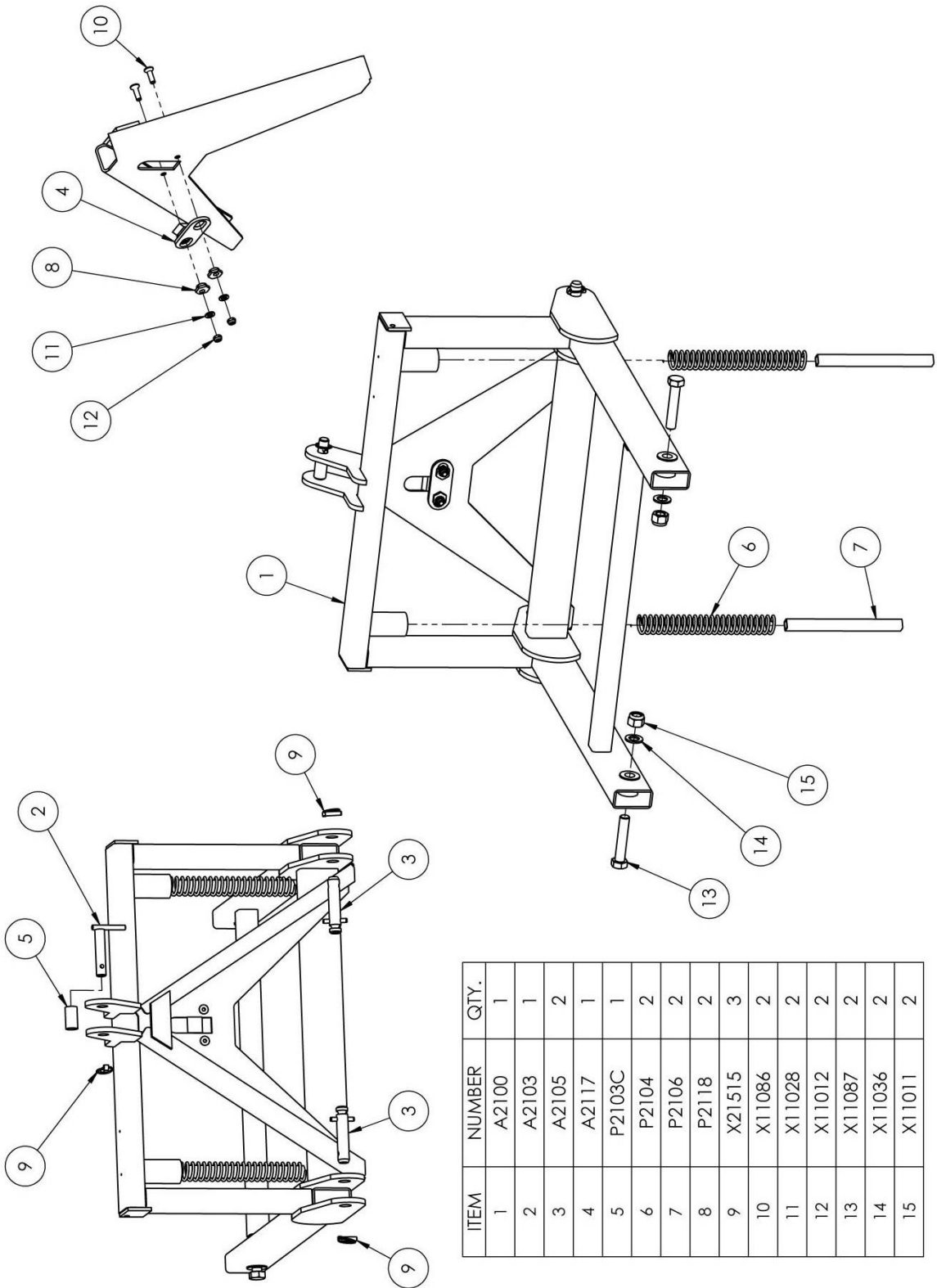
**NB FAILURE TO EXTEND AND REPLACE THE RUBBERS WHEN REQUIRED WILL RESULT IN GALVANIZED FRAME WEAR. AG WILL NOT BE HELD RESPONSIBLE FOR THIS NEGLIGENCE.**

PAGE NUMBER REFERENCE

MODEL WIDTH	180	200	220
HEADSTOCK	12		
MAIN FRAME	13	14	15
SIDES	16		
DOORS	17	18	19

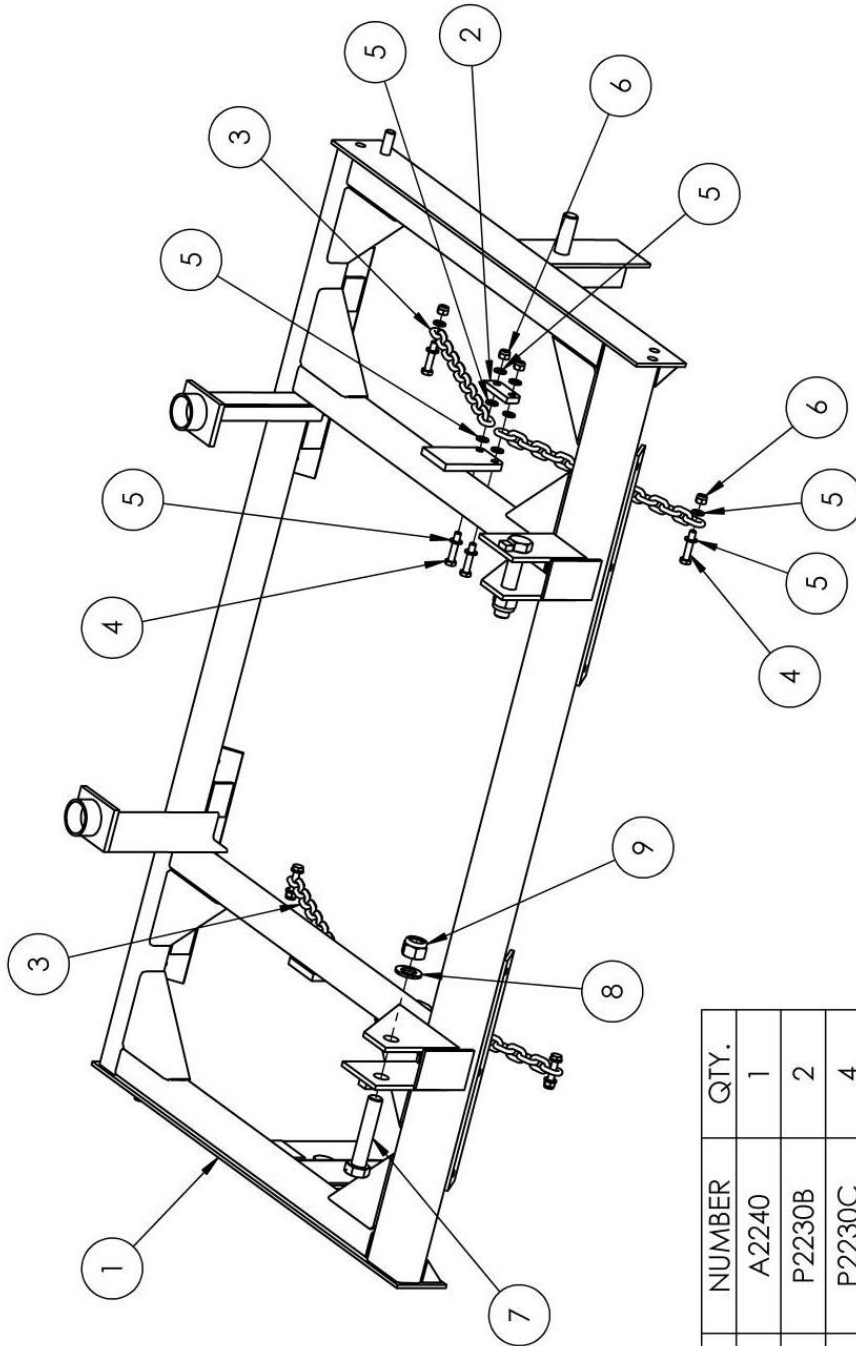


### HEADSTOCK COMPONENTS



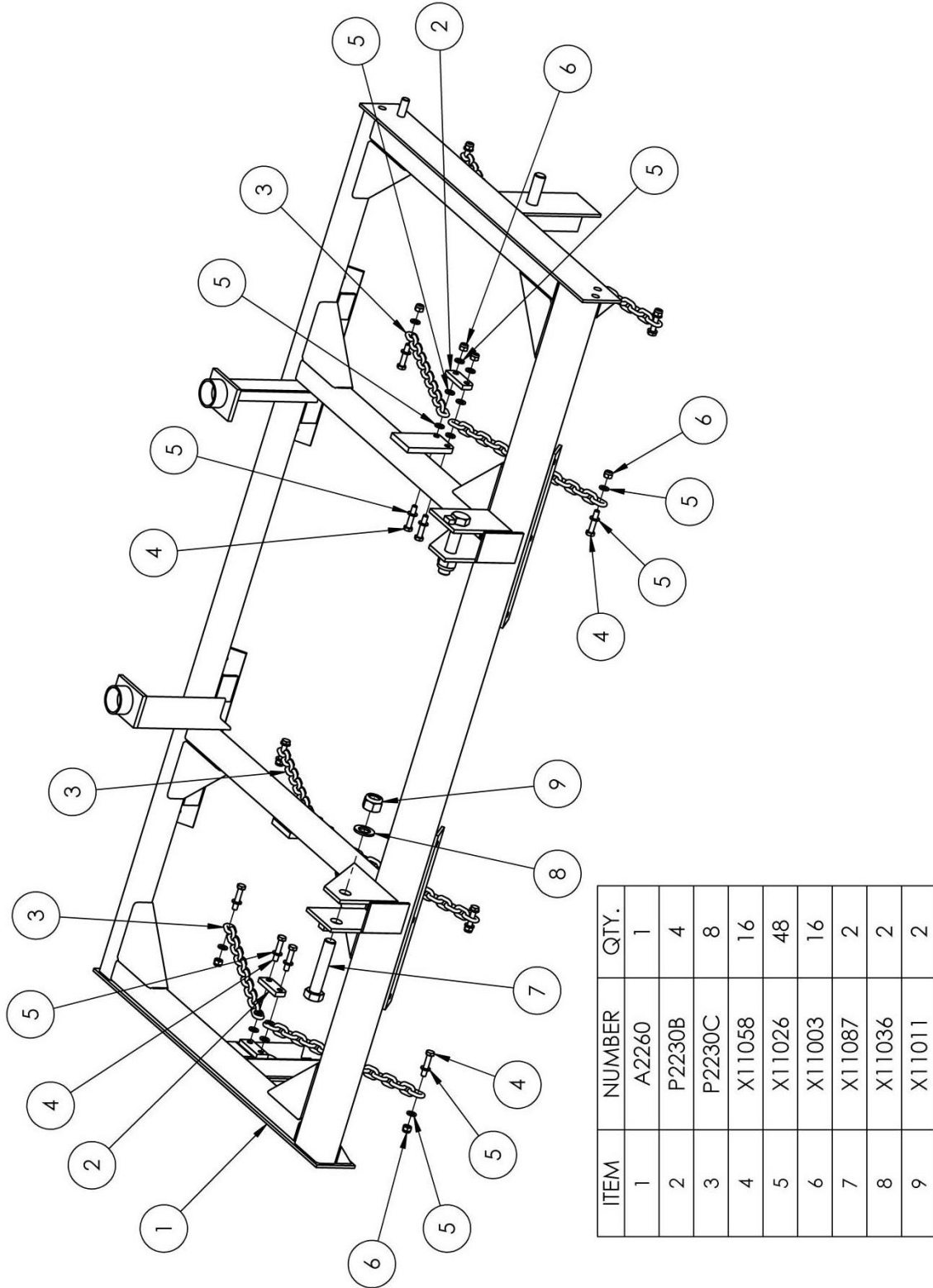
ITEM	NUMBER	QTY.
1	A2100	1
2	A2103	1
3	A2105	2
4	A2117	1
5	P2103C	1
6	P2104	2
7	P2106	2
8	P2118	2
9	X21515	3
10	X11086	2
11	X11028	2
12	X11012	2
13	X11087	2
14	X11036	2
15	X11011	2

180 WIDTH  
MAIN FRAME COMPONENTS

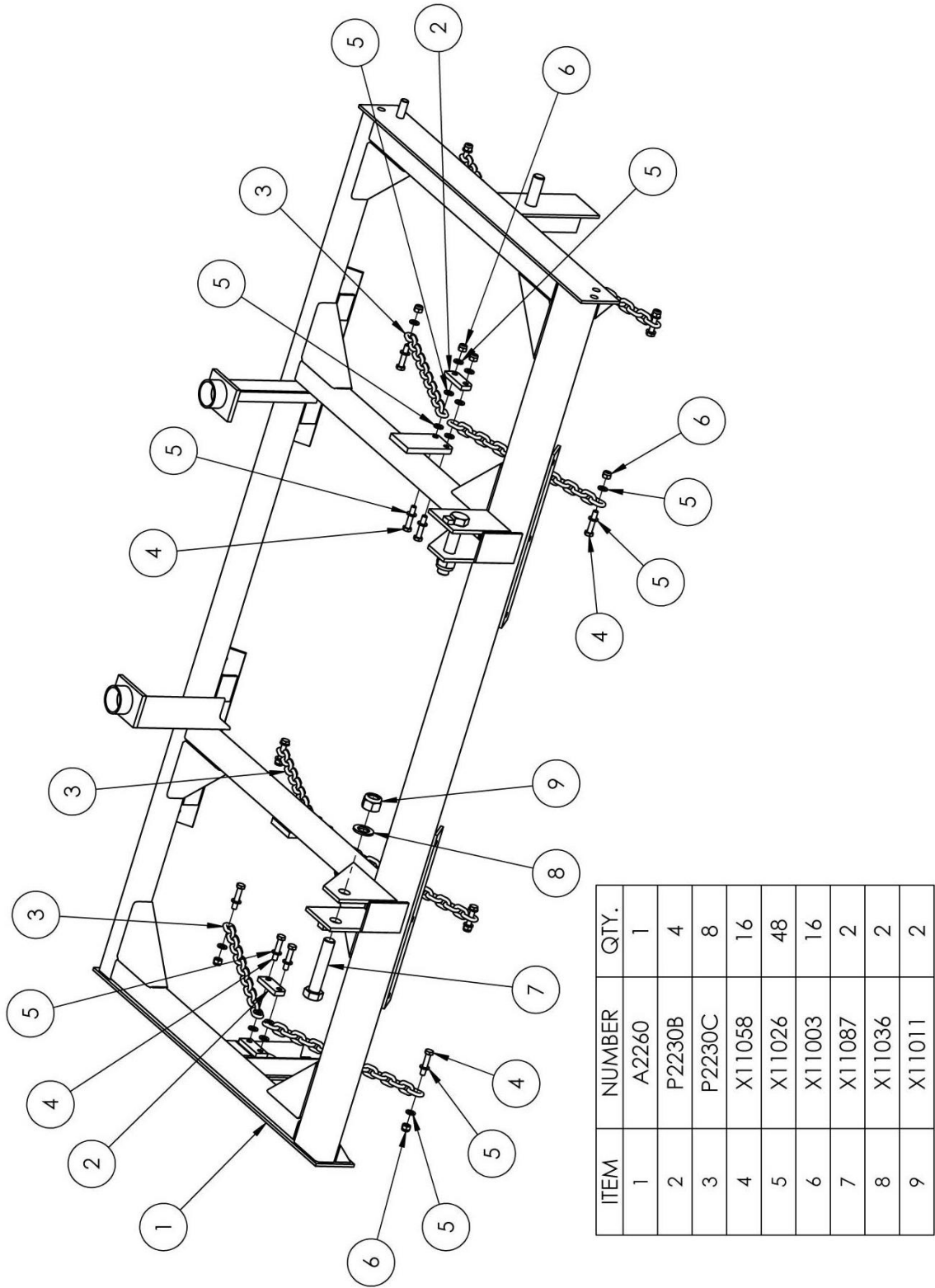


ITEM	NUMBER	QTY.
1	A2240	1
2	P2230B	2
3	P2230C	4
4	X11058	8
5	X11026	24
6	X11003	8
7	X11087	2
8	X11036	2
9	X11011	2

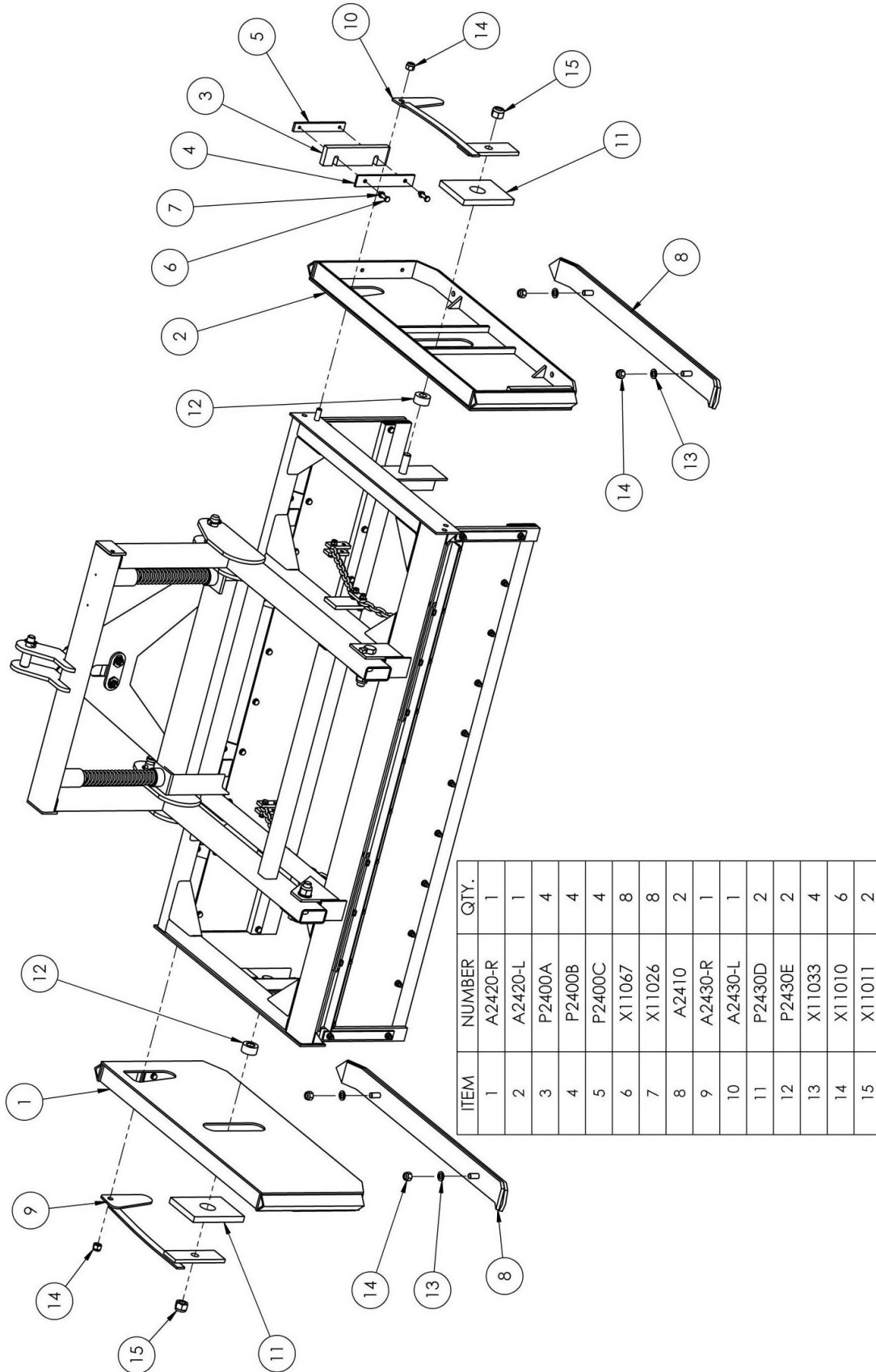
## 200 WIDTH MAIN FRAME COMPONENTS



## 220 WIDTH MAIN FRAME COMPONENTS



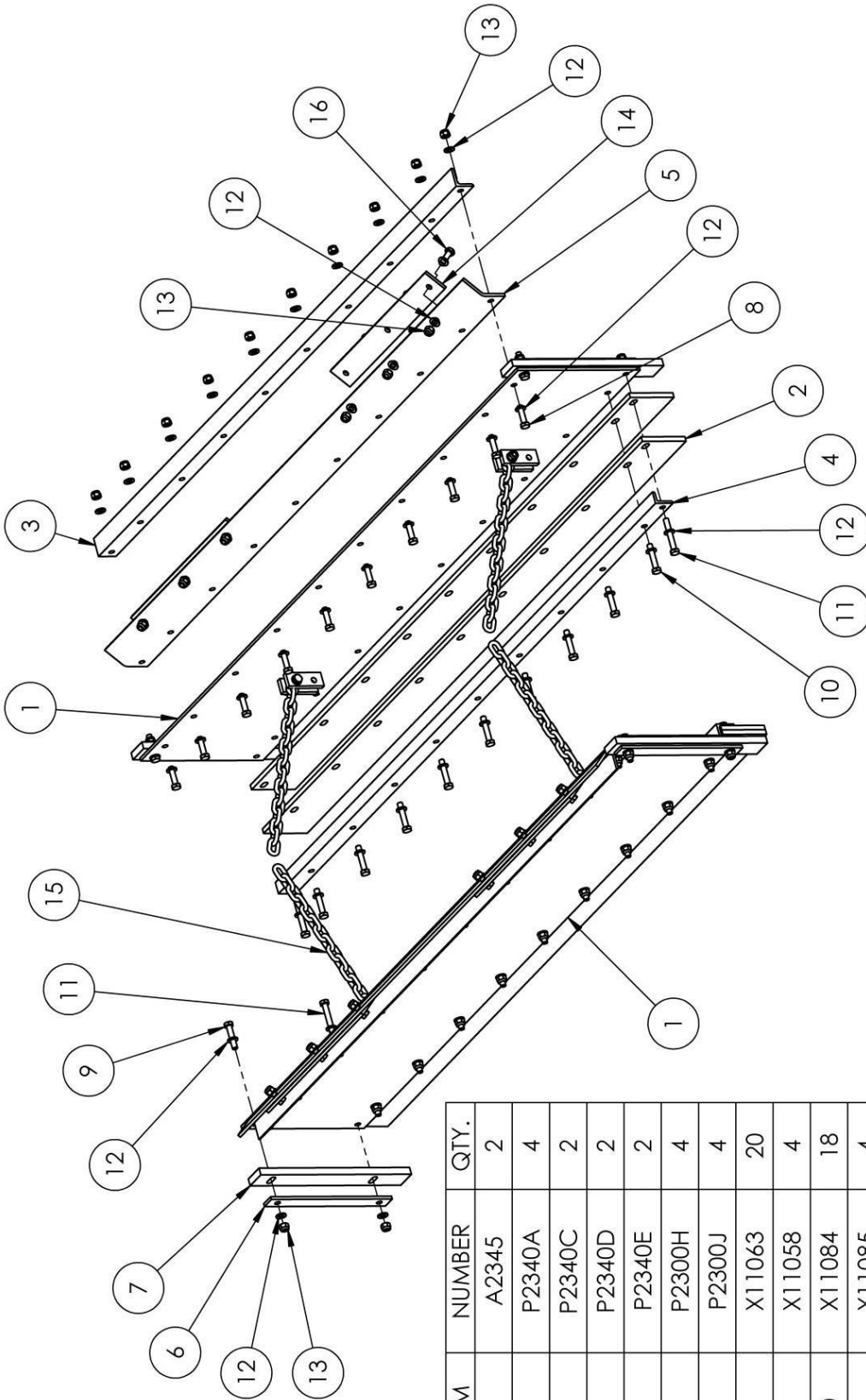
### ALL MODELS SIDE COMPONENTS



ITEM	NUMBER	QTY.
1	A2420-R	1
2	A2420-L	1
3	P2400A	4
4	P2400B	4
5	P2400C	4
6	X11067	8
7	X11026	8
8	A2410	2
9	A2430-R	1
10	A2430-L	1
11	P2430D	2
12	P2430E	2
13	X11033	4
14	X11010	6
15	X11011	2

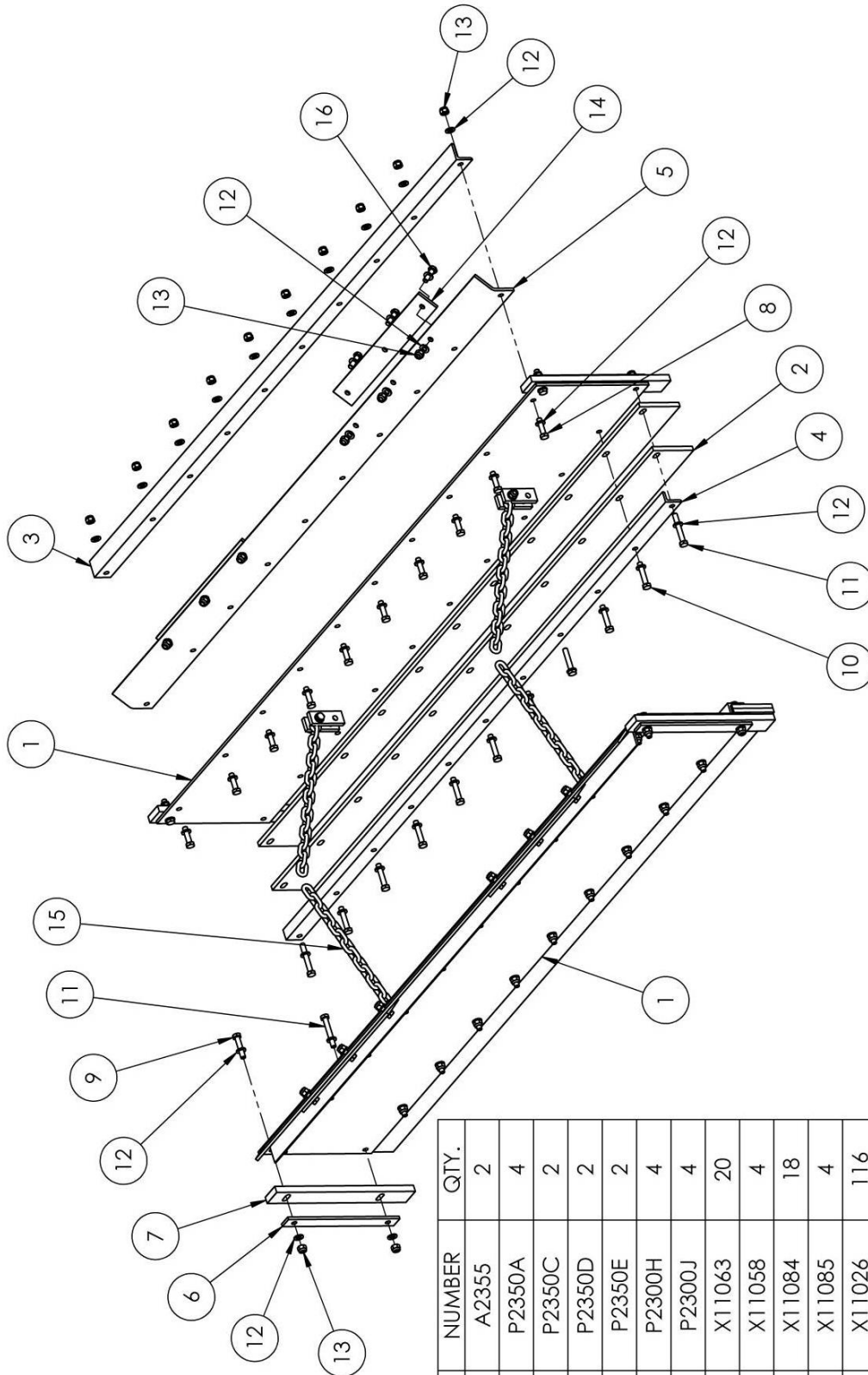


### 180 WIDTH DOOR COMPONENTS



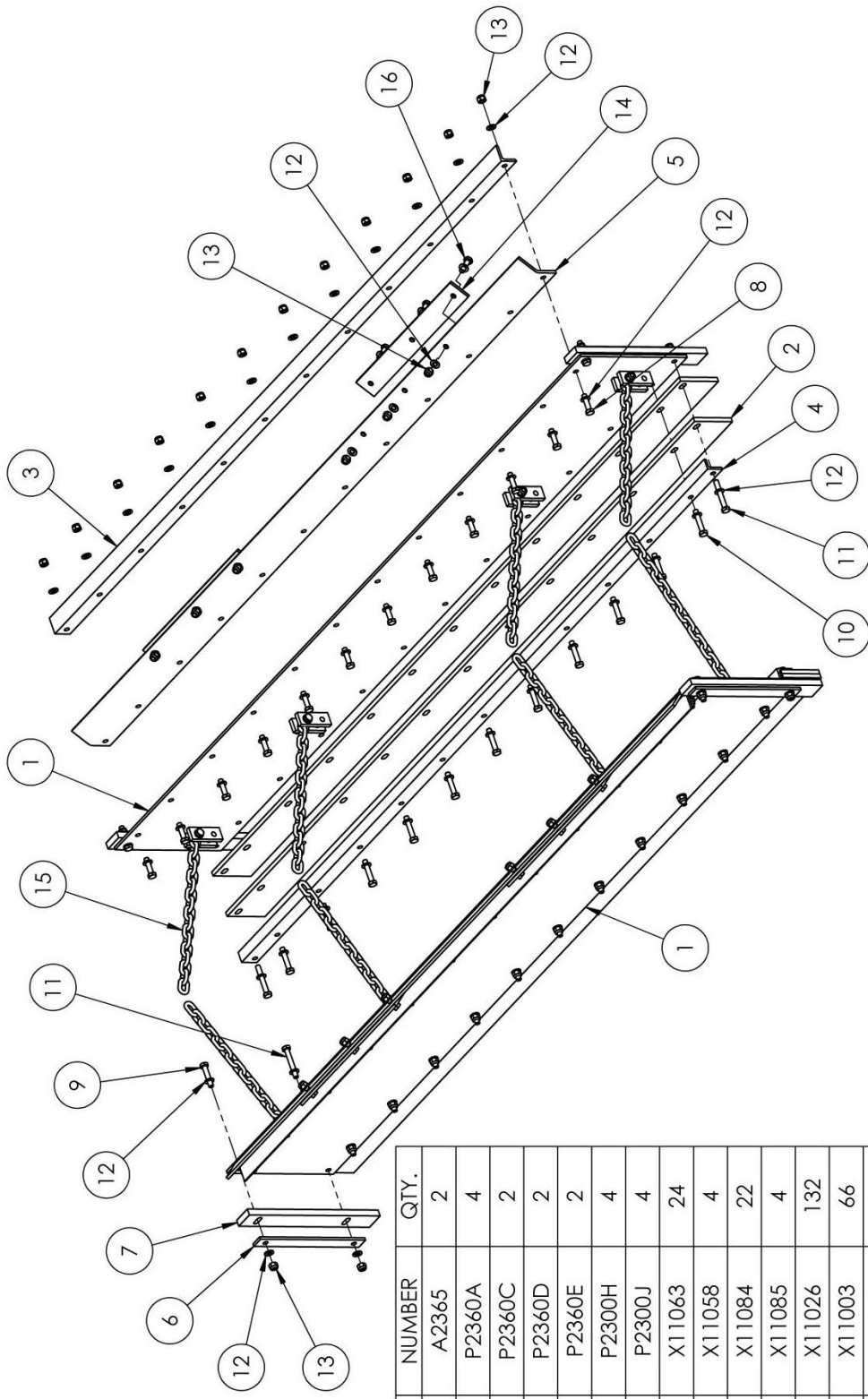
ITEM	NUMBER	QTY.
1	A2345	2
2	P2340A	4
3	P2340C	2
4	P2340D	2
5	P2340E	2
6	P2300H	4
7	P2300J	4
8	X11063	20
9	X11058	4
10	X11084	18
11	X11085	4
12	X11026	116
13	X11003	58
14	P2200Q	4
15	P2230C	4
16	X11057	12

## 200 WIDTH DOOR COMPONENTS



ITEM	NUMBER	QTY.
1	A2355	2
2	P2350A	4
3	P2350C	2
4	P2350D	2
5	P2350E	2
6	P2300H	4
7	P2300J	4
8	X11063	20
9	X11058	4
10	X11084	18
11	X11085	4
12	X11026	116
13	X11003	58
14	P2200Q	4
15	P2230C	4
16	X11057	12

## 220 WIDTH DOOR COMPONENTS



ITEM	NUMBER	QTY.
1	A2365	2
2	P2360A	4
3	P2360C	2
4	P2360D	2
5	P2360E	2
6	P2300H	4
7	P2300J	4
8	X11063	24
9	X11058	4
10	X11084	22
11	X11085	4
12	X11026	132
13	X11003	66
14	P2200Q	4
15	P2230C	8
16	X11057	12