



AG Products

— *AG MAXI* —
OPERATION MANUAL

Released Jul 2023

www.ag-products.co.uk

+44 (0) 1565 722922

Contents

1	INTRODUCTION	1
1.1	FOREWORD	1
1.2	SAFETY.....	1
1.2.1	SAFETY PRINCIPLES	1
1.2.2	INTENDED USE	2
1.2.3	MISUSE.....	2
1.2.4	SAFETY SIGNS	3
2	ABOUT THE AG MAXI	4
2.1	THE HOPPER.....	4
2.1.1	SERIAL PLATE.....	4
2.1.2	QR CODES.....	5
2.1.3	AGITATOR DISC	5
2.1.4	HOPPER SLIDE	6
2.2	THE HANDLEBARS	7
2.2.1	FUNCTIONS ON THE HANDLEBARS	8
2.3	THE ELECTRICAL ENCLOSURE	9
2.3.1	CIRCUIT BREAKERS	9
2.4	THE BATTERY.....	10
3	SPECIFICATIONS	11
3.1	ASSEMBLY OF AG MAXI.....	11
3.2	CHARGER.....	12
3.2.1	CHARGING THE AG MAXI	13
3.2.2	3-STAGE BATTERY CHARGER INSTRUCTIONS.....	14
4	OPERATION	15
4.1	OPERATION AND SAFE USE OF THE AG MAXI.....	15
4.2	COMPLETE CONVEYOR UNIT.....	16
5	MAINTENANCE.....	18
5.1	CLEANING INSTRUCTIONS.....	18
5.2	OUT OF SEASON STORAGE.....	18
5.3	REMOVAL OF HOPPER	19
5.4	TIMING-BELT TENSION.....	20
5.5	CONVEYOR BELT TENSION	21

5.6	ADJUSTMENT OF SIDE SKIRT	22
5.7	REMOVING THE CONVEYOR FROM THE BASE OF THE AG MAXI	23
5.8	OPTIONAL EXTRAS FOR THE AG MAXI	23
5.8.1	CHANGING THE PULLEY.	23
5.9	AG MAXI AGITATOR AND GEARBOX	24
6	SPARE PARTS IDENTIFICATION.....	26
6.1	MAIN FRAME, BIN & AGITATOR.....	27
6.2	CONVEYOR COVERS, SHUTTER & SKIRT	28
6.3	CONVEYOR DRIVE & ROLLERS.....	29
6.4	AGITATOR MOTOR & COMPONENTS.....	30
6.5	ELECTRICAL COMPONENTS	31
6.6	ELECTRICAL COMPONENTS	32
7	TERMS, CONDITIONS AND WARRANTY	33
7.1	STANDARD TERMS AND CONDITIONS	33
7.2	QUALITY OF TRANSLATIONS	37
7.3	SAFETY.....	37
7.4	AG PRODUCTS DEALER WARRANTY PROCESS	38

1 INTRODUCTION

1.1 FOREWORD

Thank you for your purchase of the AG Maxi.

This manual will assist the operator to set, operate and maintain the AG Maxi. For safe and reliable operation, these instructions must be followed at all times. It is particularly important that the safety notes in the following section are read and understood by all users and maintainers of the machine before it is used.

1.2 SAFETY

The following safety instructions are applicable to all chapters of this manual.

1.2.1 SAFETY PRINCIPLES

Accident prevention programs can only prevent accidents with the co-operation of the persons responsible for the operation of the equipment.

For the safety of yourself and others, operate equipment with care and do not take unnecessary risks, which could cause an accident.

Please read all safety instructions contained in this manual with the utmost care and observe all safety signs attached to the AG Maxi. Please ensure these instructions are made available and understood by all other users of the AG Maxi. You are strongly advised to refrain from any working methods which may be hazardous.

All relevant accident prevention regulations governing the operation of agricultural machinery and other generally acknowledged health and safety regulations must be strictly observed.

CAUTION



This symbol will appear throughout this manual whenever your safety or the safety of others is involved.

1.2.2 INTENDED USE

The AG Maxi is intended for single operator use for dispensing disinfectant and bedding materials into cattle cubicles.

1.2.3 MISUSE



Foreign objects, such as stones and metal objects, must not be allowed to enter the AG Maxi. Failure to observe this may result in damage to the machine and/or injury to the operator or others.

Do not ride on the AG Maxi or permit others to do so.

Do not attempt to modify the AG Maxi or the wiring.

Do not attempt to operate the machine outside the specifications without reference to Garnett Farms Engineering Ltd or an authorised distributor.

Misuse also comprises failure to observe the instructions as given in this manual and the recommended maintenance and service requirements.

Do not tow the AG Maxi.

1.2.4 SAFETY SIGNS

The following signs appear on the machine and are for your safety and the safety of other people. Ensure that you identify each symbol and understand its warning.



All safety signs must be kept in a legible condition and must be replaced if damaged or missing.

Safety signs used.



Switch off power and remove isolator switch



Keep a safe distance from the machine to avoid injury



Don't reach into the hopper / gain access into the hopper due to the danger of rotating parts



Risk of electric shock from overhead power lines when lifting the machine



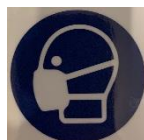
Danger of Entrapment



Ear protection is advised



Read and understand this manual before operating the machine



Use of a dust mask is advised



Return used batteries to Garnett Farms Engineering Ltd or an authorised distributor for disposal.

2 ABOUT THE AG MAXI

2.1 THE HOPPER

The AG Maxi hopper is where the bedding product is held. The hopper is made with stainless steel to maximise its life span.



2.1.1 SERIAL PLATE

The AG Maxi is identified by the serial plate. The serial plate of an AG Maxi is located on the hopper of the machine, facing the handlebars. The serial plate includes AG Products details and contact information, the C E marking, the AG Product, the year of manufacture, the unique serial number, and the weight of the AG Maxi in kgs.



2.1.2 QR CODES

Two QR codes can be found on the AG Maxi hopper, located on either side of the serial plate. Both codes are labelled, the left code is the parts manual for the AG Maxi and the code to the right of the serial plate is the operator's manual. By scanning the code with a smartphone camera, a link will appear on the screen. Click the link to access the AG Maxi operator manual.



2.1.3 AGITATOR DISC

The red agitator disc found in the hopper moves the bedding product through the hopper onto the conveyor belt.



2.1.4 HOPPER SLIDE

The volume of material dispensed is controlled by the position of the hopper slide. The hopper slide is attached to the conveyor unit as shown in the image below. The slide is pivoted about the point at which it is attached.

Fully closed.



Fully open.



2.2 THE HANDLEBARS

Handlebar inserts, bolted to the chassis of the AG Maxi means that the handlebars are adjustable to suit the operator.



The handlebar inserts come with 4x pre-set holes offering various adjustments for the operator.

Fully closed handlebars



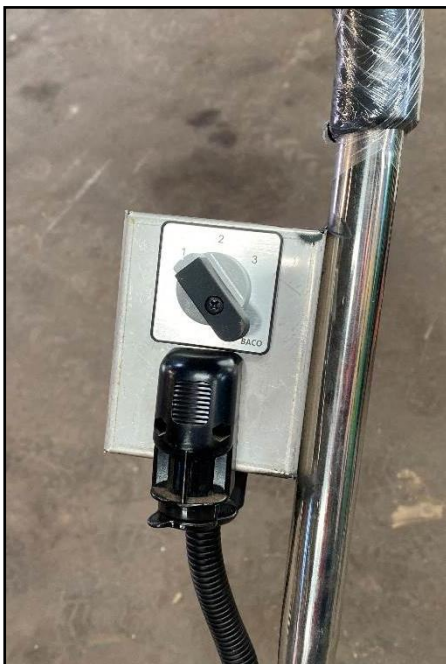
Fully extended handlebars



The handlebars have cushioned handles to maximise user comfort as standard.

2.2.1 FUNCTIONS ON THE HANDLEBARS

Located on the handlebars is the main 3 position off/on/on switch for the conveyor and agitator functions. Also fitted to the handlebars is the female charger port, for charging the AG Maxi battery.

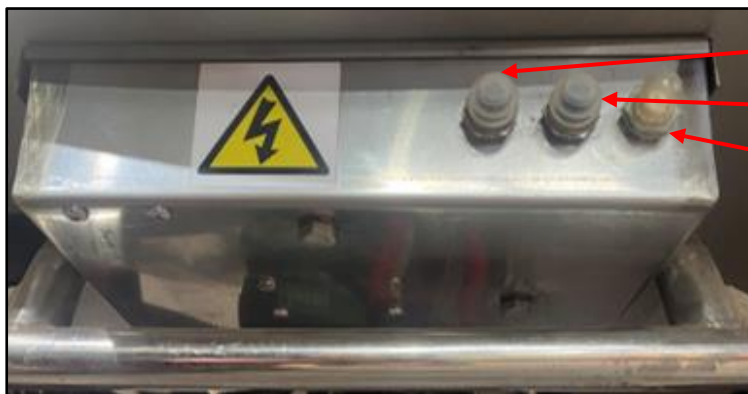


2.3 THE ELECTRICAL ENCLOSURE

The electrical enclosure for the AG Maxi is bolted to the underside of the chassis, located above the battery. The enclosure protects wiring components inside of the enclosure from water, muck, and bedding. Here you will find components for conveyor, agitator and charging circuits. Protruding from the enclosure are 3x push button reset trips for the conveyor, agitator and charging circuit.



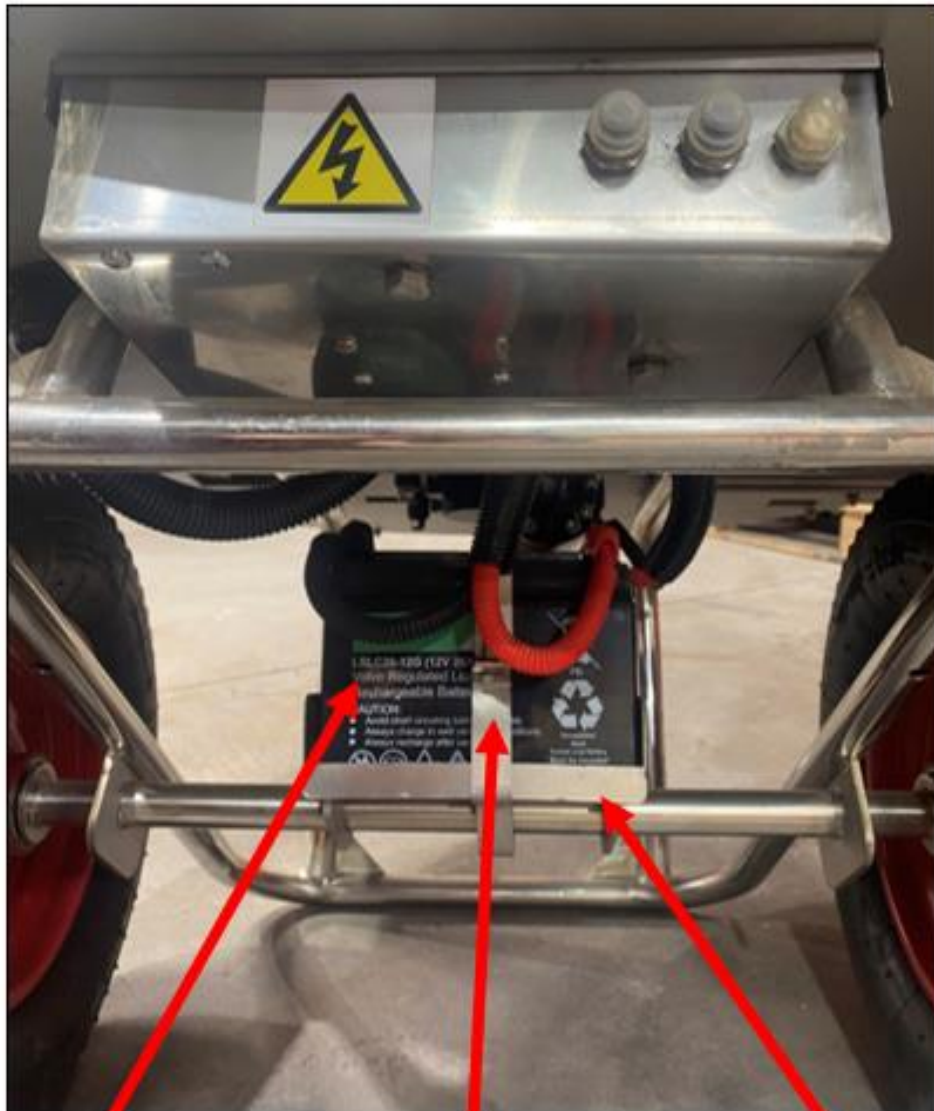
2.3.1 CIRCUIT BREAKERS



- 1) Conveyor circuit breaker
- 2) Agitator circuit breaker
- 3) Charging circuit breaker

2.4 THE BATTERY

The AG Maxi 12 V battery is located underneath the chassis of the dispenser. The battery is secured in position, by a clamp, in the battery tray located on the axle.



AG Maxi battery.

Battery clamp.

Battery tray.

3 SPECIFICATIONS

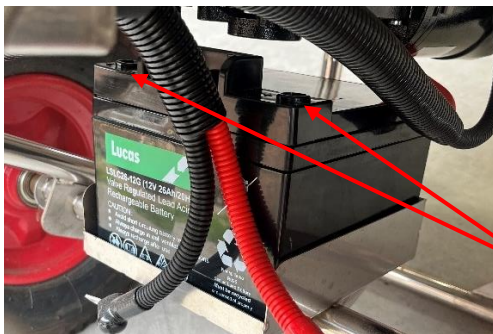
3.1 ASSEMBLY OF AG MAXI

Practice workshop safety at all times!

CAUTION

Disconnect the battery before the assembly of the AG Maxi.

- 1) Ensure the AG Maxi is placed on the ground in a stable condition.
- 2) Ensure all guards are fitted correctly before use.



Disconnect battery terminals as shown by the arrows.



Place the wheel onto the base frame of the machine and then secure it by placing the washer and external Circlip in the order shown.

3.2 CHARGER

The 12 V charger is supplied with all AG Maxis. With a “Soft start” feature to check for possible faults i.e. reverse battery connection or short circuit, before offering maximum charge current.

A “Constant current bulk charge and 3-stage charging” feature provides the fastest possible way to recharge SLA batteries without over-charging.

A “Constant voltage float” feature compensates for self-discharge, holding the battery at peak charge, ready for use. The battery can be left on charge until required without fear of overcharging.



Inside the charger box, you will find the General Instruction Sheet RE Range 3-Stage Chargers, the main body of the charger with 2x LED indication lights, red and green, Euro plug, 3 pin mains plug, fuse included, and the male charger port already fitted.

3.2.1 CHARGING THE AG MAXI

Read the charger manual provided in the charger box.



- 1) Ensure the switch is in position 1.
- 2) The AG Maxi will require a complete charge before use. Plug the male jack plug into the female charger port.
- 3) The green light on the charger should now illuminate for 5 seconds before switching to a solid red light. The battery is now charging.
- 4) When the green light illuminates, the battery is fully charged and will continue to “float charge”.
- 5) The AG Maxi can be left on float charge continuously.

Position 1 - OFF

Position 2 – CONVEYOR ON

Position 3 – CONVEYOR AND
AGITATOR ON

- Only charge the battery when the switch is in position 1.
- Never charge the AG Maxi with any other charger than the unit supplied.
- Never charge in the rain or wet conditions.
- Never leave the battery flat, always charge the battery after use.
- No damage will occur if left on “float charge” i.e. green light.
- Damage may occur if battery is left flat.

3.2.2 3-STAGE BATTERY CHARGER INSTRUCTIONS

- 1) Plug the charger in and switch on.
- 2) During start up the charger will determine battery status and depending on the result will switch to either BULK charge mode (red indicator ON) OR FLOAT charge mode (green indicator ON)

NOTE: When the charger enters float charge mode the battery is 100% fully charged.

- 3) If neither of the indicators illuminate, unplug the charger and check the fuse in the plug. Replace if necessary, plug back in and switch ON.

Operation

First stage – constant current mode. Visual indication: **Red LED ON, Green LED OFF.**

Second stage – constant voltage mode. Visual indication: As above.

Third stage – float charge mode. The battery will be maintained 100% charged. Visual indication: **Green LED ON, Red LED OFF.**

Note: On power up the charger will appear to be in “float” mode for a short period of time. This is to complete all checks as described in the feature “soft start”.

Features

“Soft start” – On power up the system will enter a “soft start” mode. This facility checks for possible faults i.e. reverse battery connection, short circuit etc, before offering maximum charge current.

“Reverse polarity protection” – Prevents damage to the charger if the battery is accidentally connected in reverse, visual indication is by a continuous flashing red indicator.

LED Protocol

Charger status	LED status
Bulk charge mode	Red – static – ON
Float charge mode (charge complete)	Green – static ON
Battery reversal detected	Red – flashing
High temperature detected	Red + Green light flashing simultaneously
Short circuit	Red + Green light flashing alternately
Open circuit	Red + Green static simultaneously

4 OPERATION

4.1 OPERATION AND SAFE USE OF THE AG MAXI



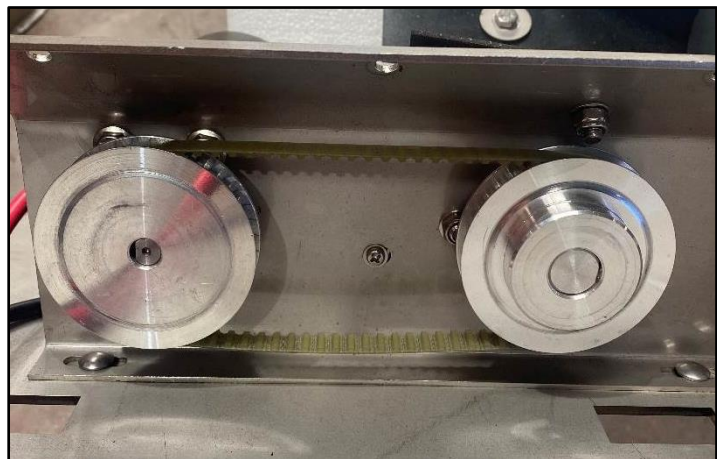
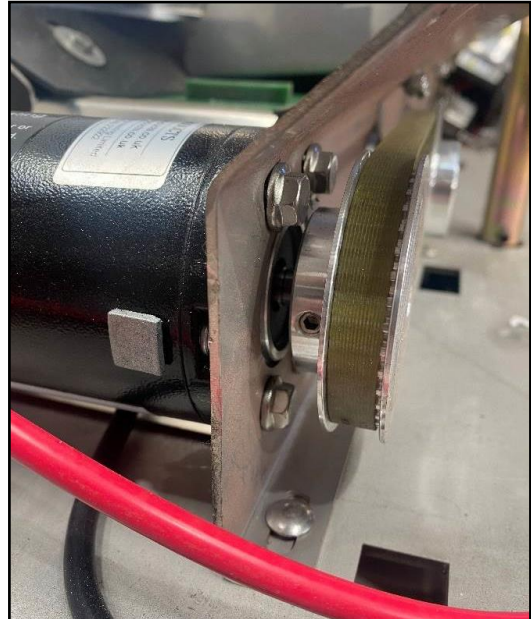
IMPORTANT: SAFETY FIRST: Before loading the machine, ensure it is correctly constructed and all guards are in place and secured. **DO NOT** operate the machine with bystanders present.

The AG Maxi has been designed to bed cubicles with ease and speed, following some simple guidelines in this booklet will ensure the AG machine is reliable and satisfactory.

- Do not overload the machine.
- Do not use any material in the machine other than is specified by the manufacturer.
- Do not allow stones and rocks to enter the machine when filling.
- No bystanders allowed in the working area.
- Only the operator must operate the AG Maxi.
- Never leave the material you are spreading in the AG Maxi when not in use.
- Never use the AG Maxi to carry any additional objects.
- Always clear the material out of the hopper after use.
- Do not pull the AG Maxi over any steps.

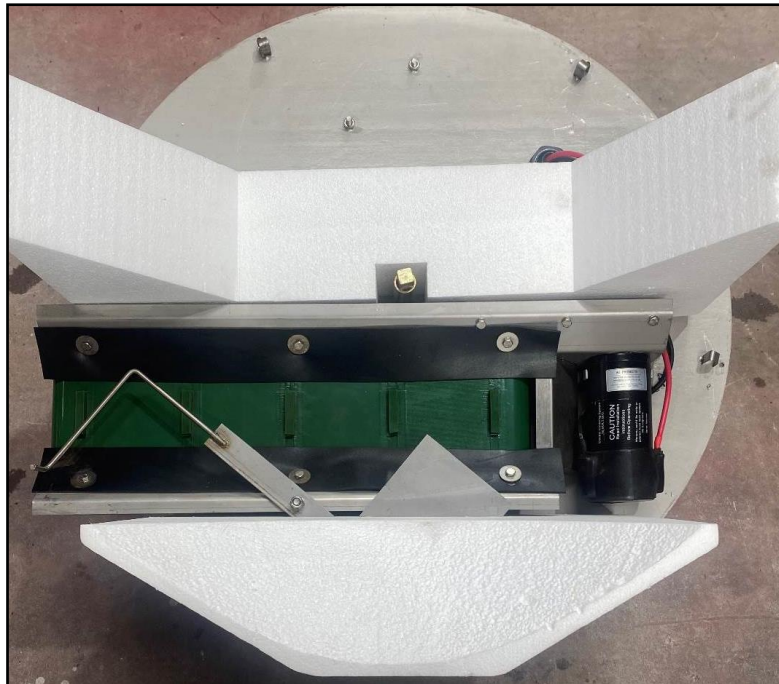
4.2 COMPLETE CONVEYOR UNIT

The conveyor unit is fixed to the chassis of the AG Maxi, underneath the hopper. 12 V from the electrical enclosure powers the conveyor motor.



The conveyor belt is fitted to the head roller, with a parallel middle idler roller and a crowned end roller to help with tracking of the conveyor belt. Conveyor side skirts are fixed to the conveyor sides, their purpose is to deflect material into the centre of the conveyor, whilst simultaneously stopping any material flowing underneath the conveyor belt.

Attached to the AG Maxi conveyor motor is information including part number, voltage, current and speed.



5 MAINTENANCE

5.1 CLEANING INSTRUCTIONS

- **Disconnect the battery before cleaning.**
- **DO NOT use a pressure washer to clean the machine.**
- We recommend using compressed air to blow away any waste material.
- A cleaning agent can be used on any heavily soiled areas.
- Wipe down with a wet cloth.
- Avoid water touching the battery and terminals.

5.2 OUT OF SEASON STORAGE

- Clean the machine thoroughly.
- Leave fully charged.
- Light coating of oil.
- **Store undercover.**
- **Do not fill and leave overnight.**

5.3 REMOVAL OF HOPPER

CAUTION

Disconnect battery terminals!

When servicing the AG Maxi, the following steps may wish to be followed. These steps, if followed, will ensure that the AG Maxi is running to its full potential.

Remove the nuts from around the exterior edge of the hopper.



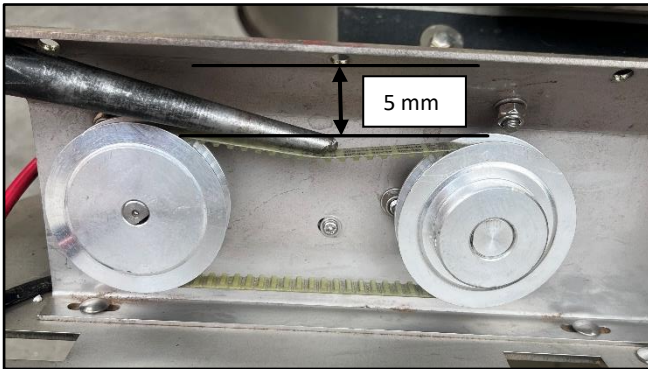
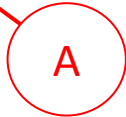
The removal of the handle will increase the manoeuvrability of the AG Maxi, during maintenance work.

5.4 TIMING-BELT TENSION



Altering the bolt (A) will allow the timing belt to be altered to the amount shown in the photo.

To remove the pulley, unscrew the grub screw located on the pulley.



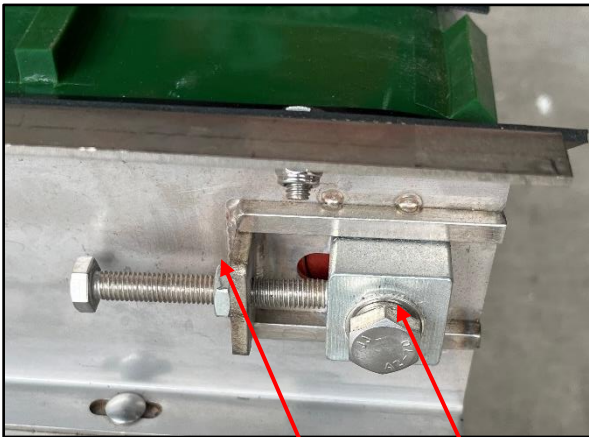
After the guard is removed, the pulleys and timing belt are then shown. Tension on the timing belt must be set at 5 mm. Excessive belt tension will cause undue motor wear, resulting in loss of power on the conveyor belt.

CAUTION

Excessive V-belt tension will void any warranty.

5.5 CONVEYOR BELT TENSION

Disconnect the battery before any maintenance work occurs.

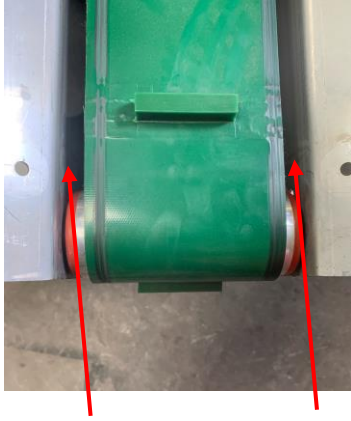


The tensioning nut shown, when tightened or slackened, will alter the belt to the desired amount. If the belt is slipping when fully loaded, alter the nut position until the belt will hold grip to the motor.

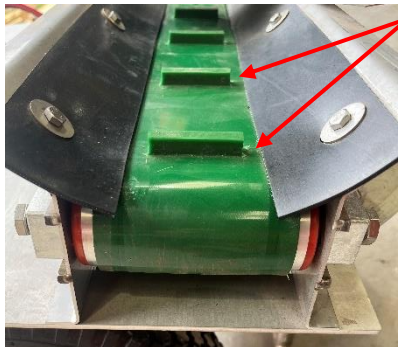
- 1) – Slacken nut A
- 2) – Alter tension bolt B

5.6 ADJUSTMENT OF SIDE SKIRT

Run the conveyor with side skirts fitted to check alignment.



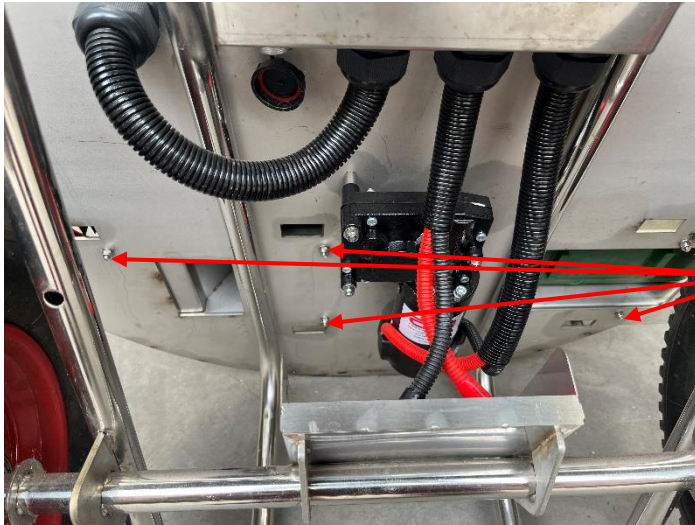
The arrows show the gap that is required for the conveyor to run without interference with the side skirts removed, which have been removed in these images, but they are shown in the photo below. For the gaps to be adjusted, adjust the nut shown on page 21, then spin the conveyor manually, to see if the conveyor stays aligned. If the conveyor gap changes, adjust the bolt in the necessary direction. There is also another identical bolt tensioning system on the other side of the conveyor, which can also be used to alter the conveyor gap.



The conveyor teeth need clearance of the side skirts. (Shown in the image). Insufficient clearance will cause undue wear on the conveyor belt and will void the warranty.

SIDE SKIRTS NEED TO BE REPLACED EVERY TWO YEARS.

5.7 REMOVING THE CONVEYOR FROM THE BASE OF THE AG MAXI



Removing the five cup head bolts indicated by the arrows enables the conveyor to be removed.

5.8 OPTIONAL EXTRAS FOR THE AG MAXI

In addition to the AG Maxi, there are optional extras, which are designed to enhance the performance and make it possible to adapt the AG Maxi to suit your working requirements and environment.

5.8.1 CHANGING THE PULLEY.

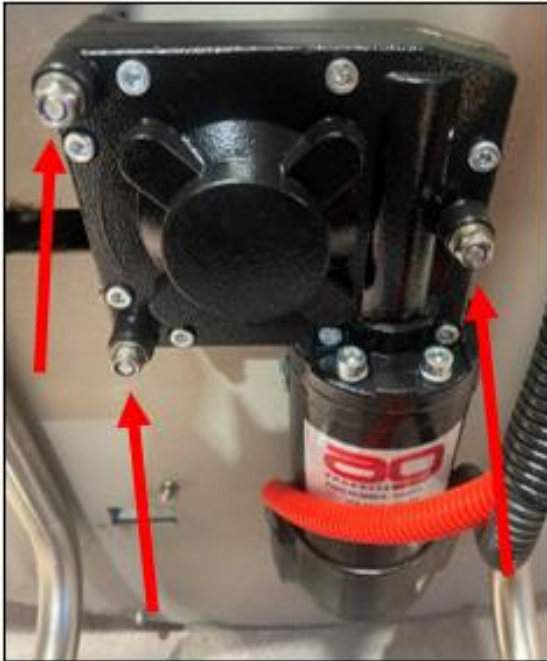
Reduces the distance of material thrown onto the bedding area.



As an additional optional extra to the normal AG Maxi pulley setup, there is also the option shown to the left. Remove previous larger pulley and V-belt. Adjust V-belt tension to 5 mm deflection. This will then alter the rate at which the conveyor runs.

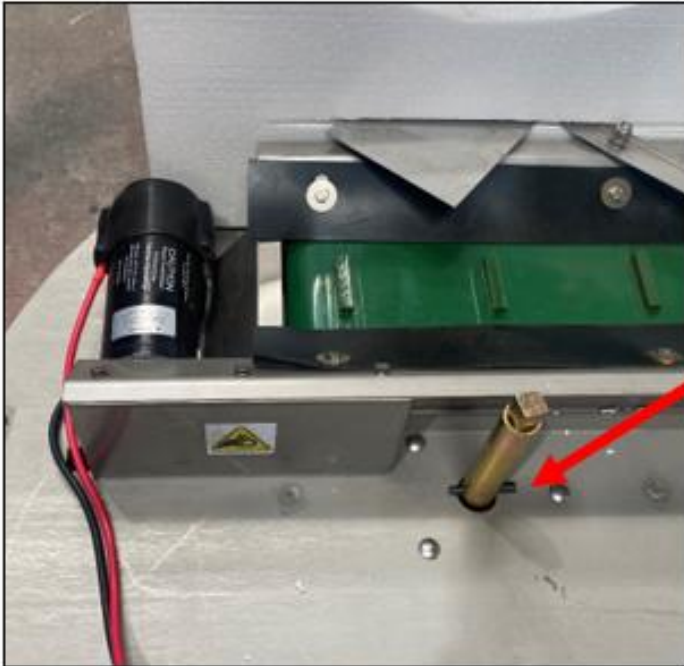
5.9 AG MAXI AGITATOR AND GEARBOX

The agitator motor and gearbox are fixed to the underside of the AG Maxi chassis, above the battery. The 3x M6 cup-head bolts fix the motor and gearbox to the AG Maxi chassis. Bolts are fitted through the top side of the chassis, next to the conveyor and proceed through the gearbox housing as illustrated below. 12 V from the electrical enclosure powers the agitator motor.

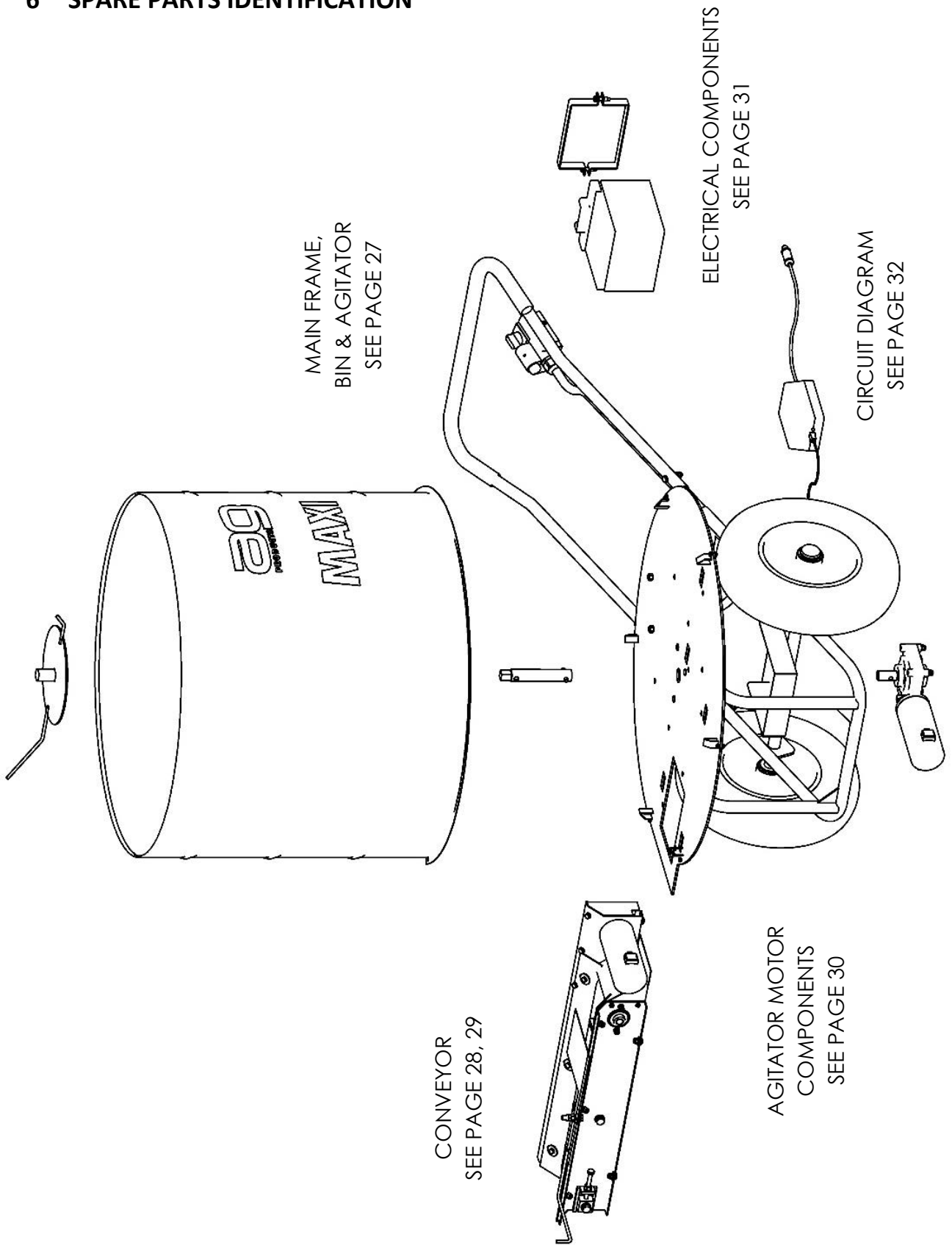


Attached to the AG Maxi agitator motor is information including part number, voltage and current speed.

The agitator shaft is fixed to the shaft of the gearbox by a roll pin. With the hole in the centre of the AG Maxi hopper, the agitator shaft protrudes through the base of the hopper for the red agitator disc to be fitted.

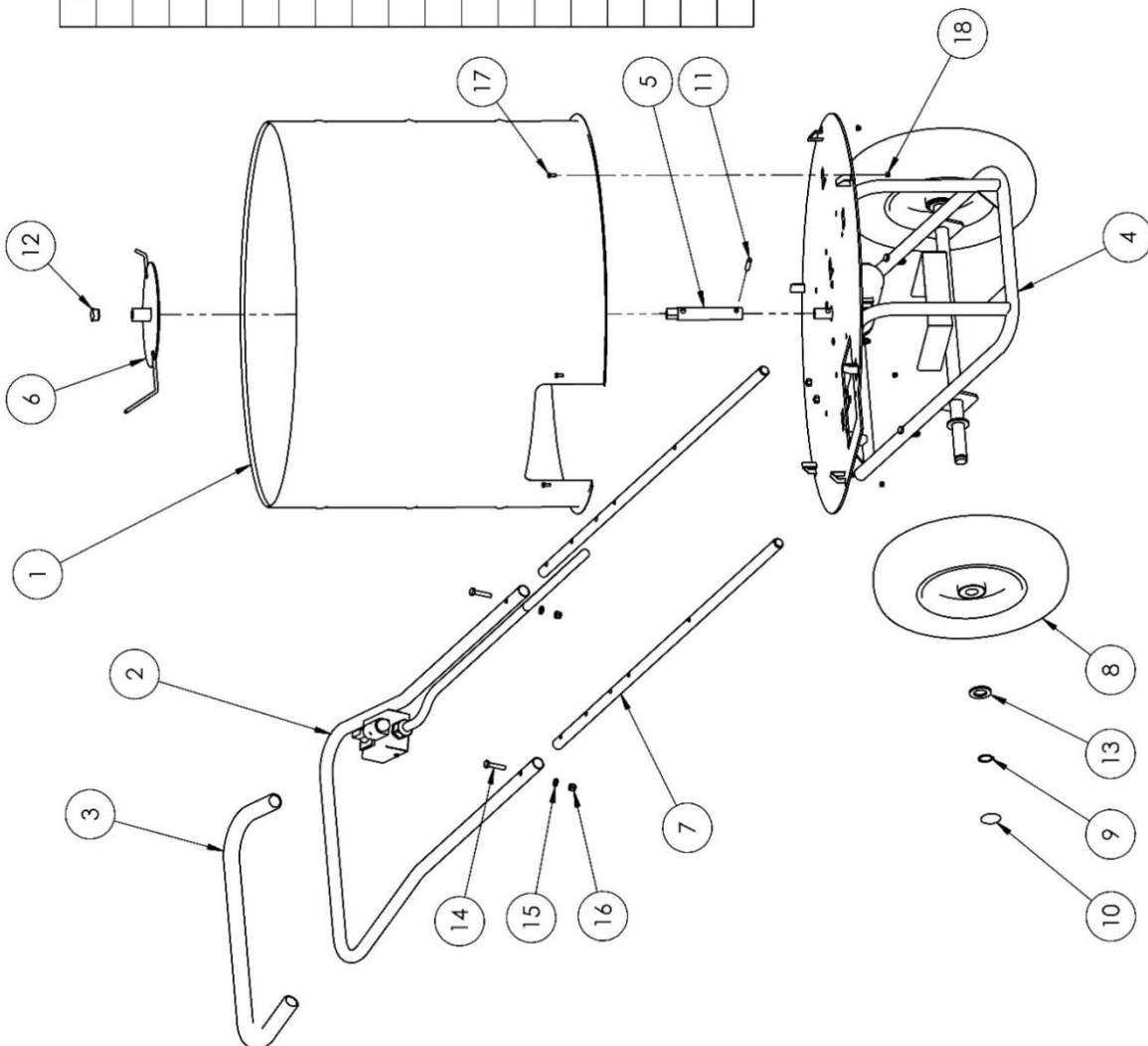


6 SPARE PARTS IDENTIFICATION



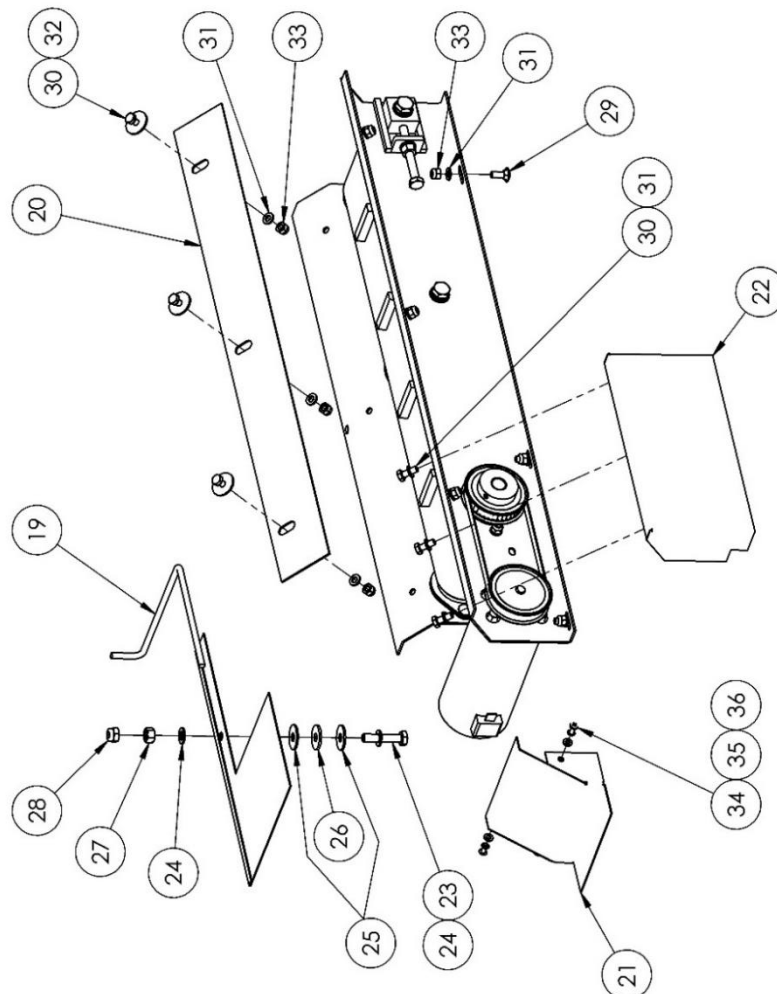
6.1 MAIN FRAME, BIN & AGITATOR

ITEM	DESCRIPTION	NUMBER	QTY.
1	HOPPER WELD ASSY	A1301	1
2	HANDLE WELDED ASSY	A1310	1
3	HANDLE GRIP	P1238	1
4	FRAME WELD ASSY	A1312	1
5	AGITATOR DRIVE SHAFT ASSY	A1321	1
6	DISC WELDED ASSY	A1330	1
7	JOINING SHAFT	P1227	2
8	PEDESTRIAN DISPENSER WHEEL & TYRE	X21201	2
9	EXTERNAL CIRCLIP	X21502	2
10	PUSH-ON END CAP	X21610	2
11	C-PIN	X21530	1
12	SHS END CAP	X21611	1
13	FLAT WASHER	X11036	2
14	HEX HD SCREW	X11080	4
15	FLAT WASHER	X11027	4
16	NYLOC NUT	X11006	4
17	HEX HD SCREW	X11092	6
18	NYLOC NUT	X11014	6



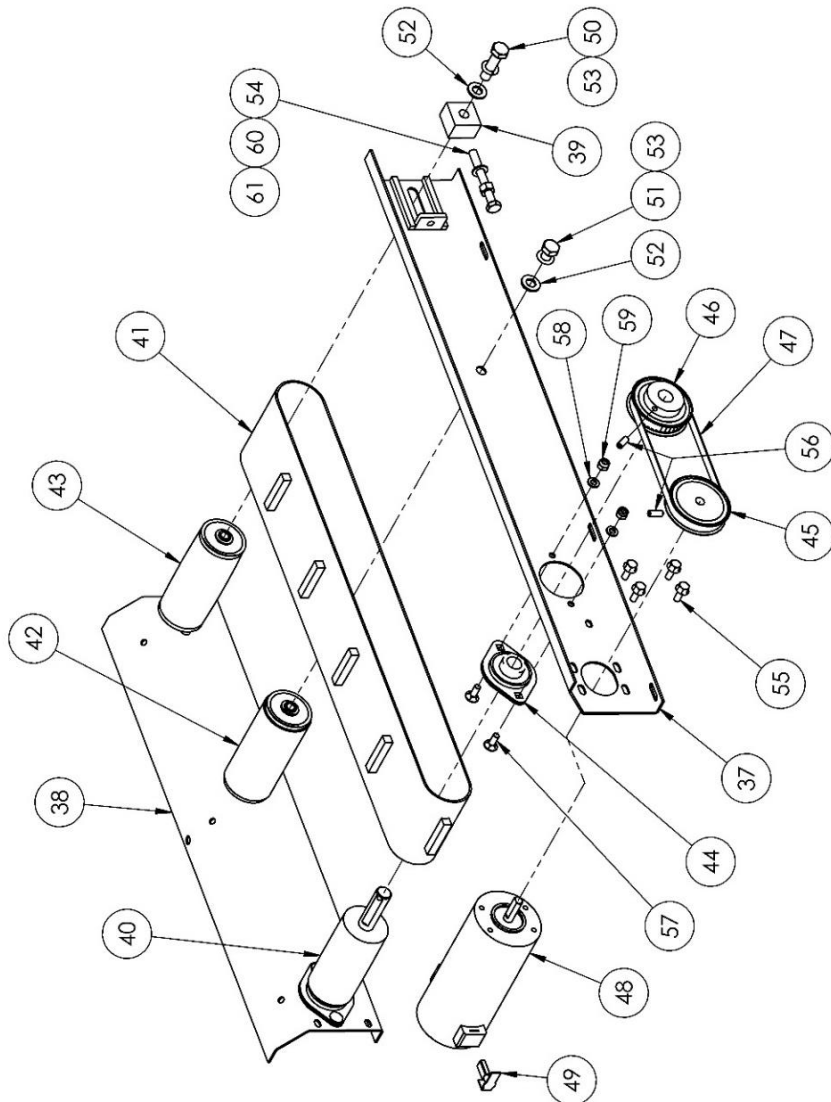
6.2 CONVEYOR COVERS, SHUTTER & SKIRT

ITEM	DESCRIPTION	NUMBER	QTY.
19	SHUTTER	A1362	1
20	MAXI SKIRT	P1361	2
21	COVER	P1363	1
22	TIMING BELT COVER	P1364	1
23	HEX HD SCREW	X11080	1
24	FLAT WASHER	X11027	2
25	LARGE FLAT WASHER, ø25	X11043	2
26	LARGE NYLON WASHER, ø25	X11044	1
27	FULL NUT	X11007	1
28	NYLOC NUT	X11006	1
29	CUP HD SQR BOLT	X11126	5
30	HEX HD SCREW	X11124	9
31	FLAT WASHER	X11029	14
32	LARGE FLAT WASHER, ø25	X11045	6
33	NYLOC NUT	X11013	11
34	POZI PAN HD SCREW	X11093	3
35	FLAT WASHER	X11038	3
36	SPRING WASHER	X11040	3



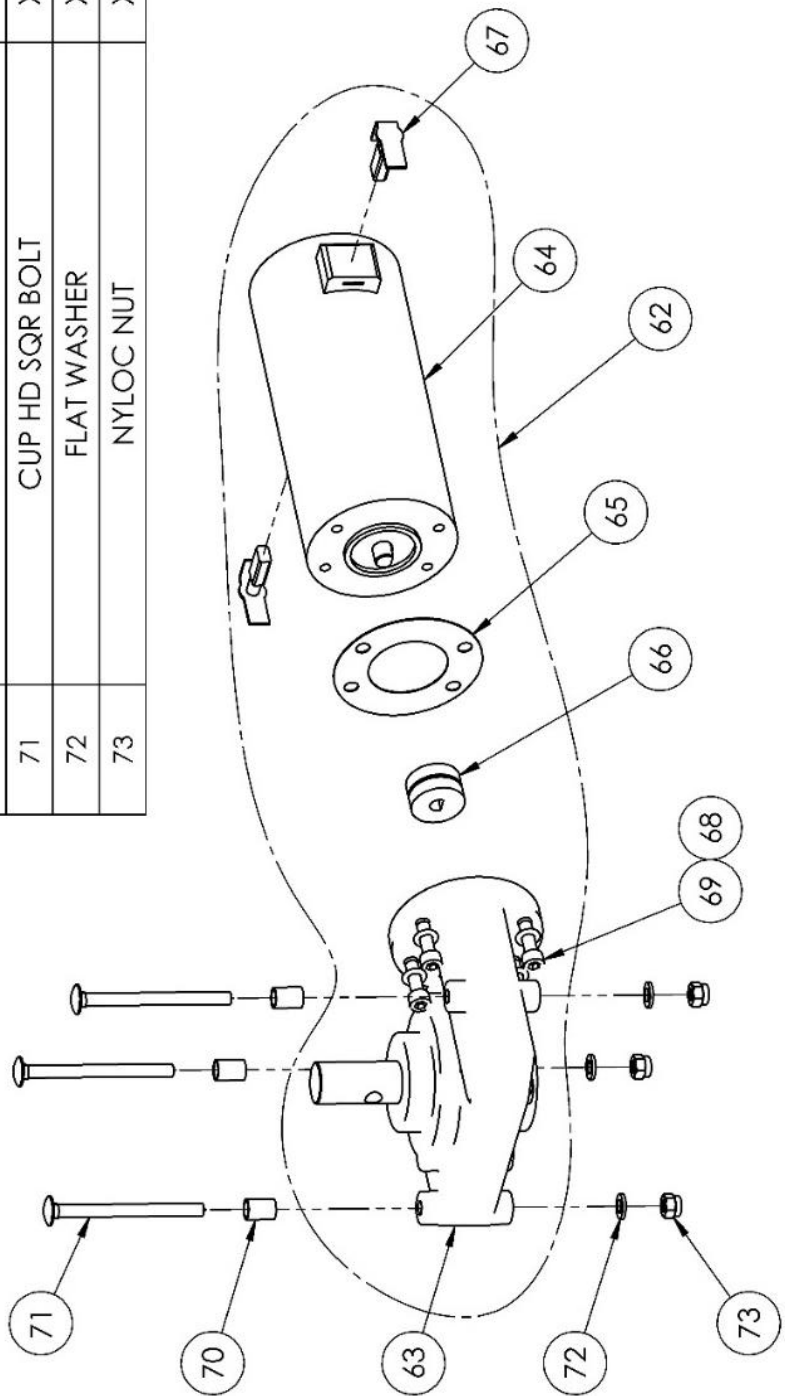
6.3 CONVEYOR DRIVE & ROLLERS

ITEM	DESCRIPTION	NUMBER	QTY.
37	CONVEYOR DRIVE SIDE ASSY	A1354	1
38	CONVEYOR SIDE ASSY	A1355	1
39	TENSIONER BLOCK	P1358	2
40	HEAD ROLLER	P1359	1
41	MAXI CONVEYOR BELT	P1360	1
42	MAXI CONVEYOR IDLER, PARALLEL	X21013	1
43	MAXI CONVEYOR IDLER, CROWNED	X21014	1
44	2 BOLT PRESSED STEEL FLANGED BEARING	X21004	2
45	38 TOOTH, T5 PULLEY, 9.525 BORE	X32301	1
46	38 TOOTH, T5 PULLEY, 16 BORE	X32302	1
47	TIMING BELT	X32303	1
48	MAXI CONVEYOR MOTOR	X50021	1
49	MOTOR BRUSH	X50020	2
50	HEX HD SCREW	X11063	2
51	HEX HD SCREW	X11125	2
52	FLAT WASHER	X11026	4
53	SPRING WASHER	X11035	4
54	HEX HD SCREW	X11103	2
55	HEX HD FLANGE LOCK SCREW	X11128	4
56	SKT SET SCREW	X11127	2
57	CUP HD SQR BOLT	X11126	4
58	FLAT WASHER	X11029	4
59	NYLOC NUT	X11013	4
60	FLAT WASHER	X11027	2
61	FULL NUT	X11007	2



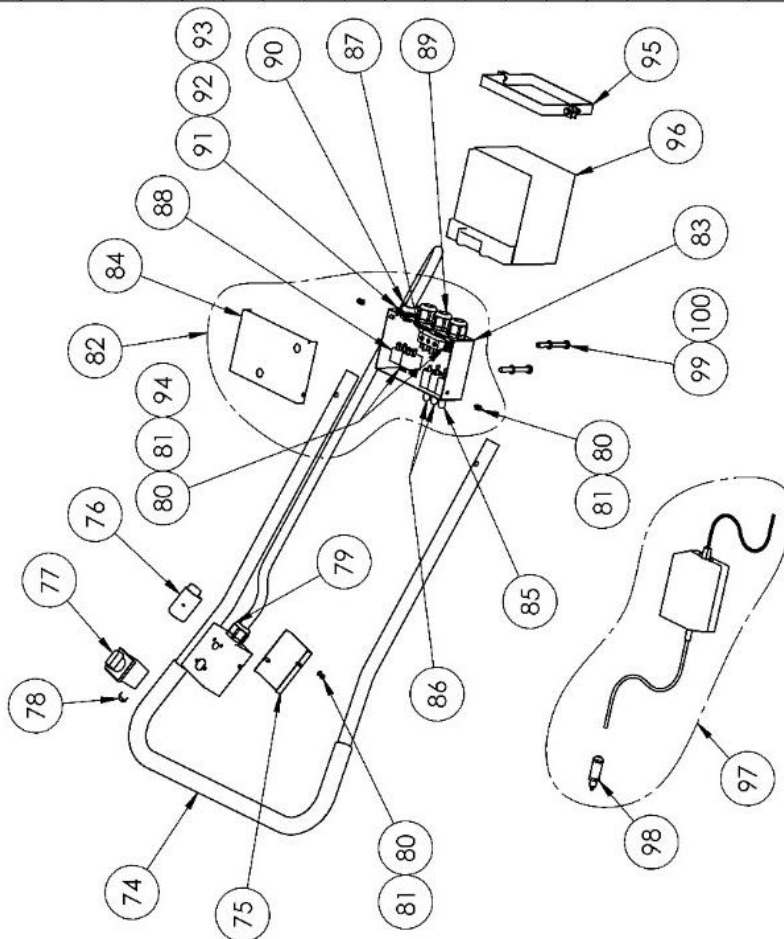
6.4 AGITATOR MOTOR & COMPONENTS

ITEM	DESCRIPTION	NUMBER	QTY.
62	GEARED MOTOR ASSEMBLY, MAXI AGITATOR	X50015	1
63	GEARBOX, MAXI AGITATOR	X50016	1
64	MAXI AGITATOR MOTOR	X50017	1
65	GEARBOX GASKET	X50018	1
66	GEARBOX COUPLING	X50019	1
67	MOTOR BRUSH	X50020	2
68	SPRING WASHER	X11039	4
69	SKT CAP HEAD SCREW	X11129	4
70	MOTOR STAND-OFF	P1314	3
71	CUP HD SQR BOLT	X11096	3
72	FLAT WASHER	X11029	3
73	NYLOC NUT	X11013	3

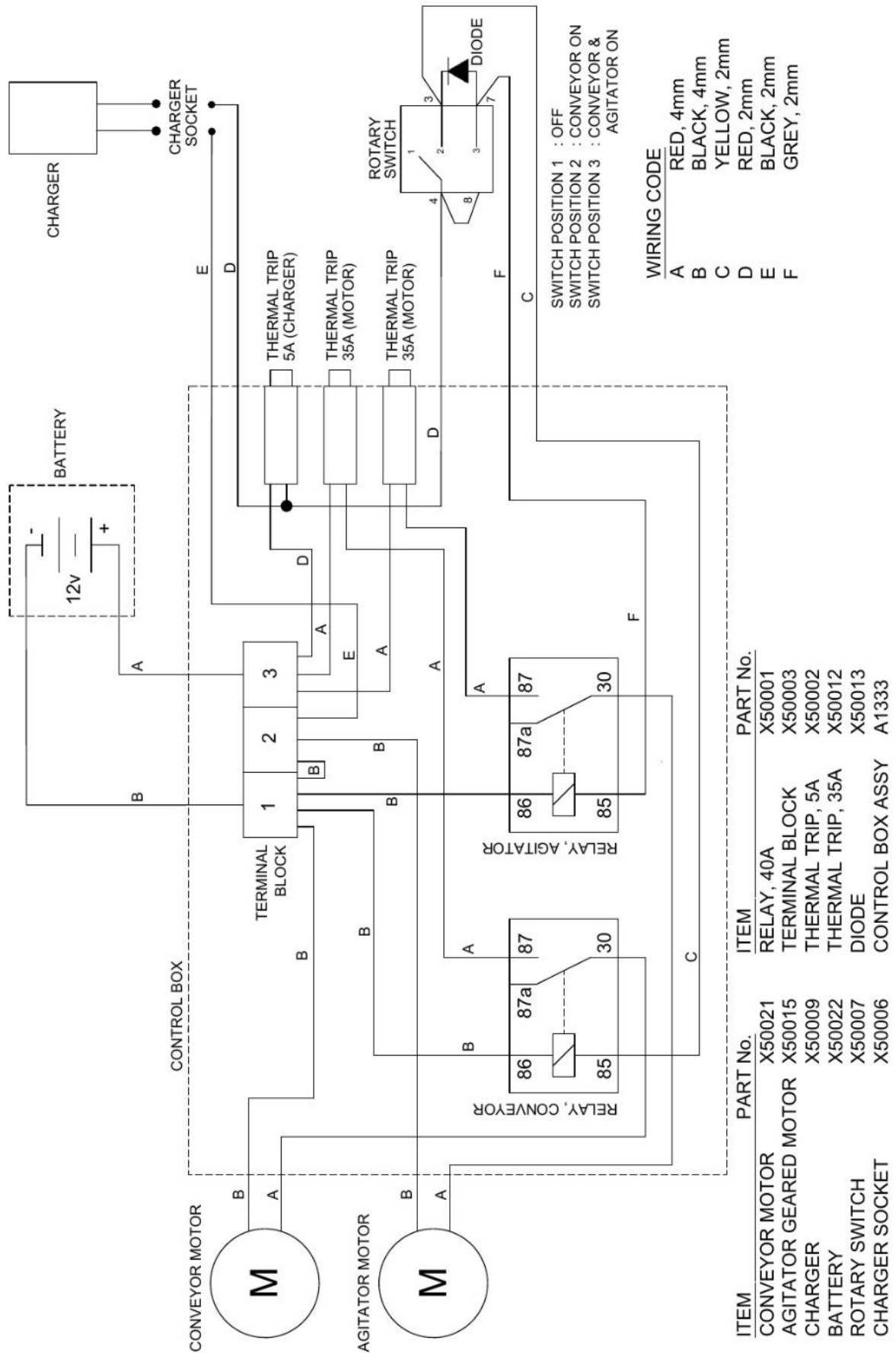


6.5 ELECTRICAL COMPONENTS

ITEM	DESCRIPTION	NUMBER	QTY.
74	HANDLE ASSY WITH ELECTRICAL PARTS	A1305	1
75	ROTARY SWITCH BOX LID	P1211	1
76	CHARGER SOCKET	X50006	1
77	ROTARY SWITCH	X50007	1
78	DIODE	X50013	1
79	CABLE GLAND	X50004	1
80	POZI PAN HD SCREW	X11093	8
81	FLAT WASHER	X11038	8
82	CONTROL BOX ASSY	A1333	1
83	CONTROL BOX BASE	P1332A	1
84	CONTROL BOX LID	P1332B	1
85	THERMAL TRIP - 5A	X50002	1
86	THERMAL TRIP - 35A	X50012	2
87	3-WAY TERMINAL BLOCK	X50003	1
88	RELAY	X50001	2
89	CABLE GLAND	X50004	3
90	BULKHEAD MOUNT SOCKET	X50005	1
91	POZI PAN HD SCREW	X11097	4
92	FLAT WASHER	X11042	4
93	NYLOC NUT	X11015	4
94	NYLOC NUT	X11016	4
95	BATTERY CLAMP	A1335	1
96	MAXI BATTERY	X50022	1
97	CHARGER	X50009	1
98	CHARGER PLUG	X50014	1
99	HEX HD SCREW	X11103	2
100	SPRING WASHER	X11037	2



6.6 ELECTRICAL COMPONENTS



7 TERMS, CONDITIONS AND WARRANTY

7.1 STANDARD TERMS AND CONDITIONS

Garnett Farms Engineering Limited

These terms and conditions and any dispute or claim arising out of or in connection with them shall be governed by and construed in accordance with English law, and the parties submit to the exclusive jurisdiction of the English courts.

TERMS AND CONDITIONS OF BUSINESS (HOME MARKET)

Definitions

“The Company” means Garnett Farms Engineering Limited. “The Customer” means the Company, organisation, firm or person whose order for goods is accepted by the Company.

General

All quotations given and orders accepted by the Company are subject to these terms and conditions of business. All other terms, conditions and modifications are excluded unless agreed to in writing by the Company.

Specifications

The Company’s policy is one of continuous improvement and development. Specifications and prices are therefore subject to change without notice. Published descriptions of goods are intended to provide a general idea of the goods and shall not constitute a sale by description.

Prices

All price lists previous to that which is the latest at the time of ordering are cancelled. Except for specific equipment as listed in the current price list, prices for machines include delivery to the dealer’s premises in mainland Britain. Where whole or part carriage is chargeable, details of rates and machines involved are given in the price list currently applicable. Delivery of spare parts is chargeable and is dependent upon the method of transport requested by the Customer at the time of ordering. The minimum invoice charge, excluding VAT, is £10.

Listed prices and delivery charges do not include VAT or any other tax or levy on the supply of goods, which will be an additional charge to the Customer.

Payment Terms

Unless otherwise agreed in writing at the time of ordering, payment terms will be strictly in line with the published Marketing Strategy current at that time. If payment is not made by the due date, the Company shall be entitled to charge interest on the outstanding amount at 4% above the current Bank Base Rate, accruing daily.

Late payment of special nett or early payment invoices may incur a single surcharge of 5% by way of loss of discount.

Delivery

Delivery of machines will be scheduled depending upon Company transport, but every attempt will be made to meet the customer's requirements. Delivery dates specified verbally or in writing are approximate only.

The method of transport required for the delivery of spare parts must be specified at the time of ordering. The Company accepts no liability for delay in delivery or the consequences of any such delay howsoever caused.

The Customer must notify the Company immediately upon receipt of the goods of any damage, shortage, or errors in delivery. Non-receipt of goods must be notified within 7 days of receipt of invoice unless the invoice specifically refers to an early payment scheme. The responsibility for the goods will pass to the Customer from the time of delivery.

Title

All goods remain the property of the Company until the Customer has paid in full the whole of the contract price. While the goods remain the property of the Company, the Customer shall keep them in good condition and insure them against damage or theft. They shall be returned to the Company upon demand. Any proceeds from an insurance claim in this connection shall belong to the Company for whom the Customer shall hold the same in trust. The Customer is prohibited from creating any mortgage, charge, lien or other encumbrance adverse to the title of the Company.

The Customer will keep the Company's goods separately identifiable and if the goods are resold, the Customer will have the fiduciary duty to account to the Company for the proceeds of the sale.

Returns

No goods will be accepted for credit by the Company without prior agreement. Any goods accepted for credit shall be returned at the Customer's expense and will be subject to a 10% handling charge unless otherwise agreed.

Warranty

The guarantee is in addition to and does not affect a purchaser's statutory rights.

Garnett Farms Engineering Limited products carry a 12-month Parts and Labour Warranty. Certain products carry an extra warranty as specified in the relevant sales literature. Components supplied as part of the original machine, but manufactured by another company e.g. PTO shafts, wheels etc., are subject to the original manufacturer's condition of warranty. Failure of wearing parts due to "Fair Wear and Tear" is not covered by the terms of the warranty.

The Warranty is invalidated by misuse, neglect and improper repairs or adjustment. The warranty does not cover fire or accidental damage.

The right to withdraw warranty is reserved if:

Non-original parts are fitted;

The machine has been abused, badly maintained or used for purposes other than that for which it was intended.

When ordering parts under warranty, this must be made clear at the time of ordering, giving the serial number of the machine (where appropriate) and the date of purchase. The parts will either be supplied free of charge or invoiced then credited upon receipt of the defective parts if the claim is accepted.

The cost of carriage of parts supplied under warranty will be paid by the Company except where express delivery is requested by the Customer. Under such circumstances, the Company reserves the right to charge for the cost difference between express and normal transport.

Parts replaced under warranty shall become the property of the Company and the return of those parts for inspection may be requested. Payment for the parts and carriage will be due in the event of the failure being found to be outside the terms of the warranty.

An agreement and an authorisation number must be sought from the Company by the repairer before warranty repairs are commenced. Warranty claims will not be considered without a valid authorisation number.

Credit cannot be issued for parts not supplied by the Company unless there has been a prior agreement for the use of those parts. Where such agreement exists, the credit given will normally exceed the value which would have been invoiced if the parts had been obtained from the Company.

Warranty claims must be submitted within four weeks of the repair.

Standard rates apply for credit of claims for labour and travelling (up to a maximum of 30 miles).

Parts fitted outside of the machine's warranty period carry a 3-month warranty on parts only. The warranty cannot be transferred to the initial purchaser.

Except as mentioned above, no condition of warranty, collateral warranty or representation as to the goods or their quality, design, specification, performance or fitness for a particular purpose if given by the Company or shall be implied into the sale of goods by law. The Company shall not be liable, whether in contract, tort or otherwise for any loss, damage, expense or injury (except personal injury or death) whether to person or property, howsoever caused and whether direct or consequentially suffered by the Customer, his employees, agents or any third party arising out of the contract for the sale of the goods, the goods supplied, or work done by the Company.

To qualify for the full benefit of this warranty, the dealer must ensure that the warranty registration details have been returned to Garnett Farms Engineering Ltd within 30 days from the date of delivery. Using the machine implies the knowledge and acceptance of these instructions and the limitations contained here in this manual. Garnett Farms Engineering Ltd reserves the right to suspend the operation of these warranty conditions unless and until the purchaser has paid in full for the goods or parts in question.

7.2 QUALITY OF TRANSLATIONS

Where instructions for use are translated from these Original Instructions into other languages, expert translators or specialists shall be responsible for the translation, including editing and proofreading, and:

- have basic competencies in communication, particularly technical communication.
- be familiar with the subject area.
- be fluent in the original and target languages, preferably native speakers in the target language.

Colloquial expressions and untypical regional variations of names and product features should be avoided.

Translated instructions should be clearly marked as translations of the Original Instructions.

7.3 SAFETY

It is the responsibility of the dealer to ensure the end-user is handed the instruction book and receives adequate training in the safe use of the machine.

7.4 AG PRODUCTS DEALER WARRANTY PROCESS

Warranty Registration

Form must be completed: <https://www.ag-products.co.uk/warranty-registration-form/>

within 30 days of purchase. The warranty must be registered to the end user.

Warranty Claim

To make a claim under warranty

- Diagnose the fault via the telephone with the customer and attend the breakdown with likely parts required to fix the fault.
- Take pictures of the serial number of the machine, any failed parts, and general pictures of the machine.
- Email the completed warranty claim form with corresponding photos to service@ag-products.co.uk within 30 days of identification of the fault.
- All failed parts must be held for 3 months unless instructed by AG Products
- AG Products aim to process and credit where applicable all claims within 60 days of submission of the warranty claim.

Exceptions to Warranty Cover

- Damage or depreciation caused by normal wear and tear. Parts which have been subject to alteration, modification, or fitment of non-genuine AG Products parts, wilful or accidental damage, damage caused by foreign objects (e.g. stones, metals, and any other materials other than suitable for the machine's intended use).
- Damage or depreciation caused by neglect or failure to carry out proper maintenance as recommended in the operation manual.
- Damage or depreciation caused by abnormal or improper use in accordance with AG Products recommendations and/or as per the operating manual.
- Environmental damage

Key Contacts

Warranty Claims

Alex Riley

t. 01565 722922

e: service@ag-products.co.uk

Parts Orders

Gareth Woofitt

t. 01565 722922

e: dispatch@ag-products.co.uk



Hales Pasture Farm, Allostock, Nr Knutsford, Cheshire WA16 9LT.

Tel: 01565 722922 Mob: 07921 212770 service@ag-products.co.uk

WARRANTY CLAIM

<p>DEALER</p>	<p>DATE OF CLAIM</p> <p>Job Number:</p>
<p>CUSTOMER</p>	<p>MANUFACTURER</p>
<p>MACHINE</p>	<p>SERIAL NUMBER:</p> <p>INVOICE NUMBER:</p>
<p>DATE OF DELIVERY</p>	<p>DATE OF FAULT</p>

DETAILED DESCRIPTION OF FAULT

PARTS	PRICE
PARTS SUPPLIED ON INVOICE NUMBER	
LABOUR, TRAVEL INCLUDED:	
MILEAGE 33p/MILE:	

REMARKS FROM SUPPLIER -