

AG PRODUCTS

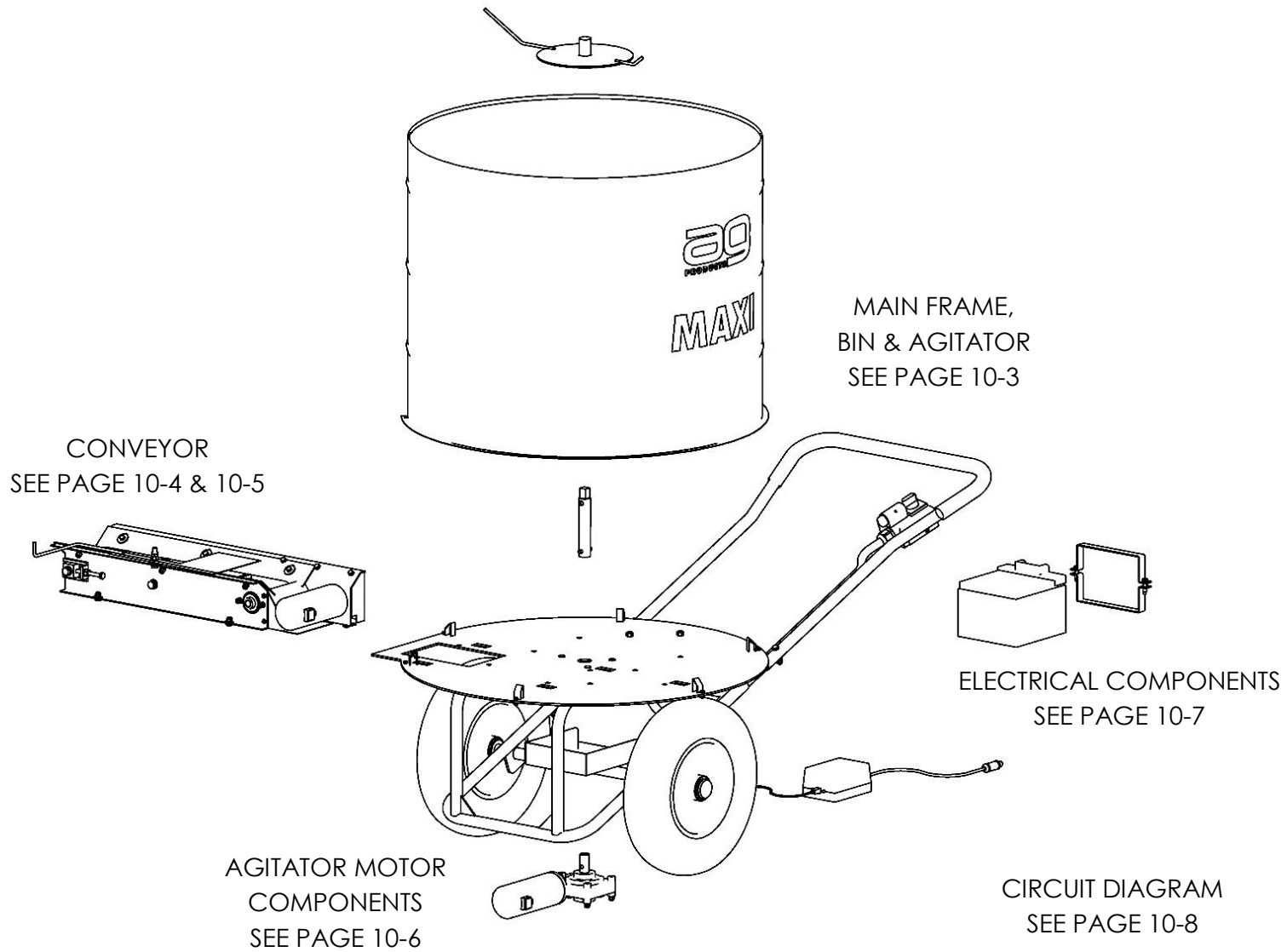
MAXI

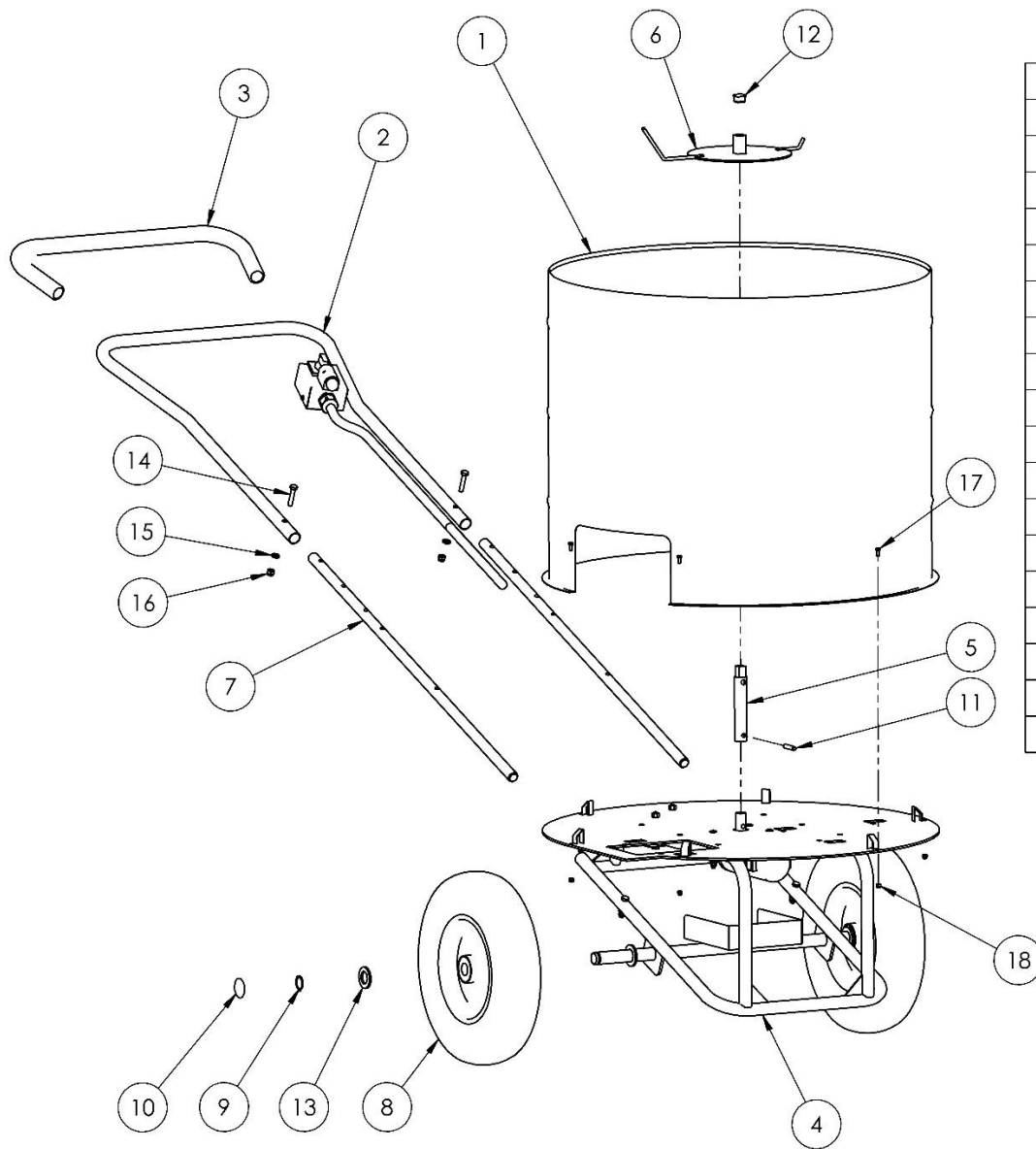


PARTS MANUAL



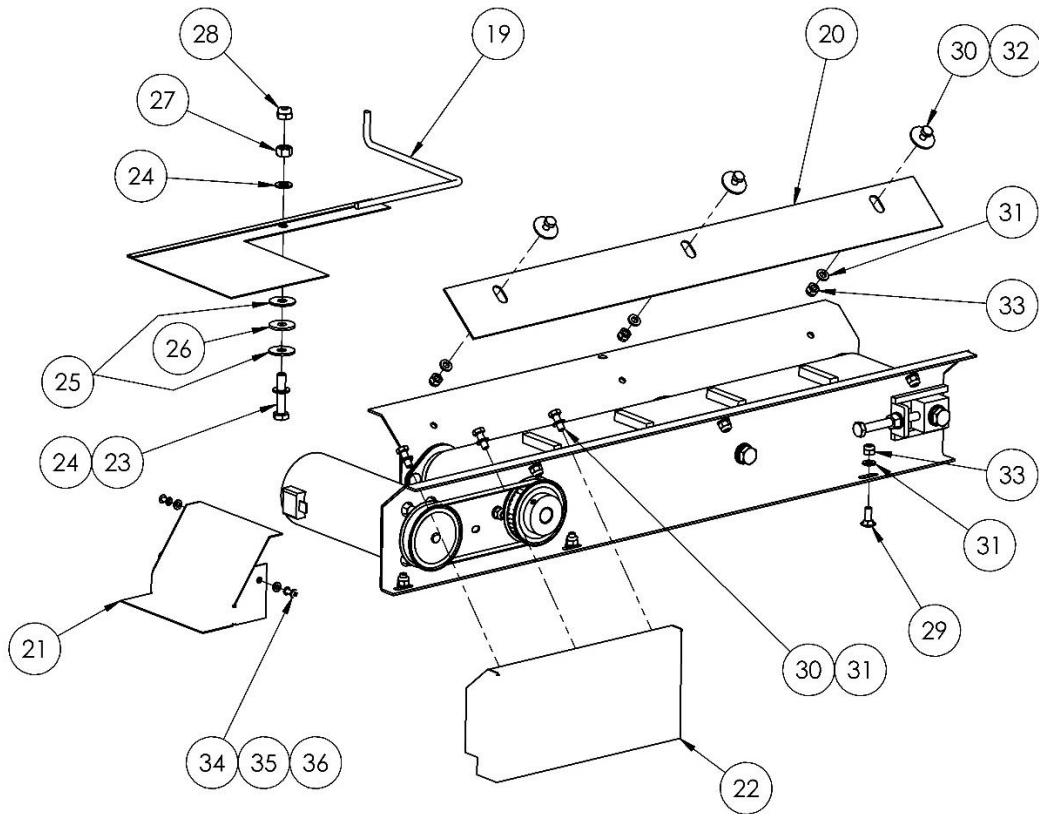
Garnett Farms Engineering Limited
Hales Pasture Farm
Allostock, Nr Knutsford
Cheshire, WA16 9LT, U.K.





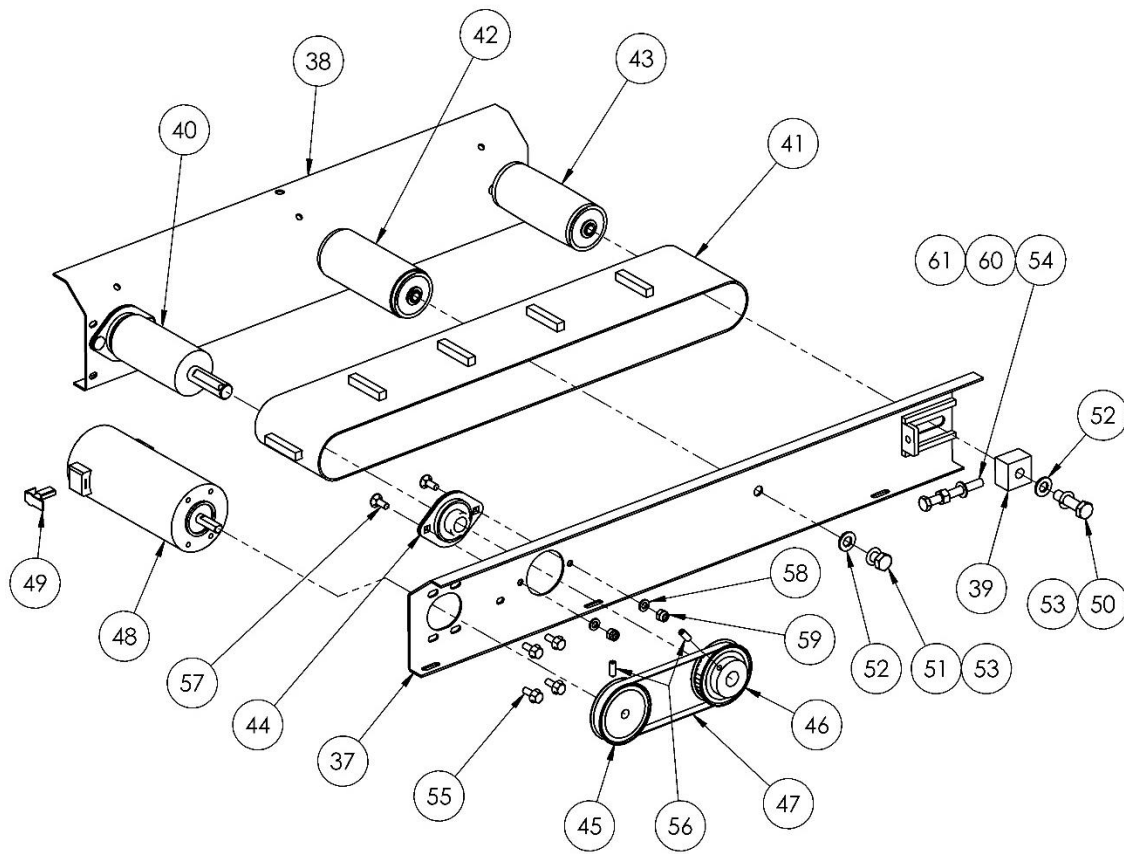
ITEM	DESCRIPTION	NUMBER	QTY.
1	HOPPER WELD ASSY	A1301	1
2	HANDLE WELDED ASSY	A1310	1
3	HANDLE GRIP	P1238	1
4	FRAME WELD ASSY	A1312	1
5	AGITATOR DRIVE SHAFT ASSY	A1321	1
6	DISC WELDED ASSY	A1330	1
7	JOINING SHAFT	P1227	2
8	PEDESTRIAN DISPENSER WHEEL & TYRE	X21201	2
9	EXTERNAL CIRCLIP	X21502	2
10	PUSH-ON END CAP	X21610	2
11	C-PIN	X21530	1
12	SHS END CAP	X21611	1
13	FLAT WASHER	X11036	2
14	HEX HD SCREW	X11080	4
15	FLAT WASHER	X11027	4
16	NYLOC NUT	X11006	4
17	HEX HD SCREW	X11092	6
18	NYLOC NUT	X11014	6

**MAIN FRAME,
BIN & AGITATOR**



ITEM	DESCRIPTION	NUMBER	QTY.
19	SHUTTER	A1362	1
20	MAXI SKIRT	P1361	2
21	COVER	P1363	1
22	TIMING BELT COVER	P1364	1
23	HEX HD SCREW	X11080	1
24	FLAT WASHER	X11027	2
25	LARGE FLAT WASHER, ø25	X11043	2
26	LARGE NYLON WASHER, ø25	X11044	1
27	FULL NUT	X11007	1
28	NYLOC NUT	X11006	1
29	CUP HD SQR BOLT	X11126	5
30	HEX HD SCREW	X11124	9
31	FLAT WASHER	X11029	14
32	LARGE FLAT WASHER, ø25	X11045	6
33	NYLOC NUT	X11013	11
34	POZI PAN HD SCREW	X11093	3
35	FLAT WASHER	X11038	3
36	SPRING WASHER	X11040	3

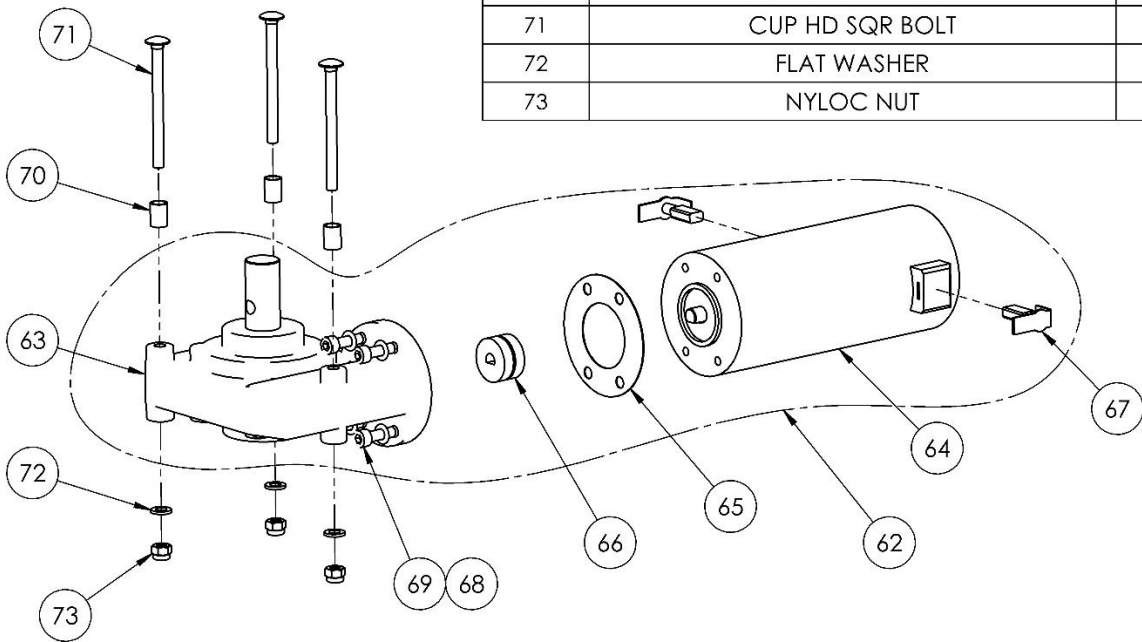
**CONVEYOR COVERS,
SHUTTER & SKIRT**



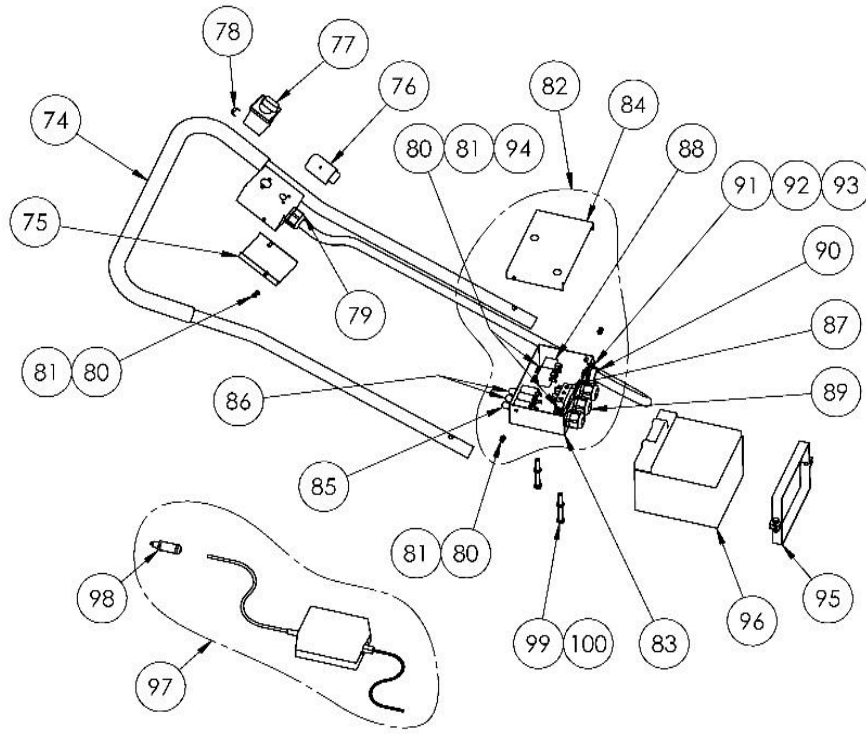
ITEM	DESCRIPTION	NUMBER	QTY.
37	CONVEYOR DRIVE SIDE ASSY	A1354	1
38	CONVEYOR SIDE ASSY	A1355	1
39	TENSIONER BLOCK	P1358	2
40	HEAD ROLLER	P1359	1
41	MAXI CONVEYOR BELT	P1360	1
42	MAXI CONVEYOR IDLER, PARALLEL	X21013	1
43	MAXI CONVEYOR IDLER, CROWNED	X21014	1
44	2 BOLT PRESSED STEEL FLANGED BEARING	X21004	2
45	38 TOOTH, T5 PULLEY, 9.525 BORE	X32301	1
46	38 TOOTH, T5 PULLEY, 16 BORE	X32302	1
47	TIMING BELT	X32303	1
48	MAXI CONVEYOR MOTOR	X50021	1
49	MOTOR BRUSH	X50020	2
50	HEX HD SCREW	X11063	2
51	HEX HD SCREW	X11125	2
52	FLAT WASHER	X11026	4
53	SPRING WASHER	X11035	4
54	HEX HD SCREW	X11103	2
55	HEX HD FLANGE LOCK SCREW	X11128	4
56	SKT SET SCREW	X11127	2
57	CUP HD SQR BOLT	X11126	4
58	FLAT WASHER	X11029	4
59	NYLOC NUT	X11013	4
60	FLAT WASHER	X11027	2
61	FULL NUT	X11007	2

**CONVEYOR DRIVE
& ROLLERS**

ITEM	DESCRIPTION	NUMBER	QTY.
62	GEARED MOTOR ASSEMBLY, MAXI AGITATOR	X50015	1
63	GEARBOX, MAXI AGITATOR	X50016	1
64	MAXI AGITATOR MOTOR	X50017	1
65	GEARBOX GASKET	X50018	1
66	GEARBOX COUPLING	X50019	1
67	MOTOR BRUSH	X50020	2
68	SPRING WASHER	X11039	4
69	SKT CAP HEAD SCREW	X11129	4
70	MOTOR STAND-OFF	P1314	3
71	CUP HD SQR BOLT	X11096	3
72	FLAT WASHER	X11029	3
73	NYLOC NUT	X11013	3

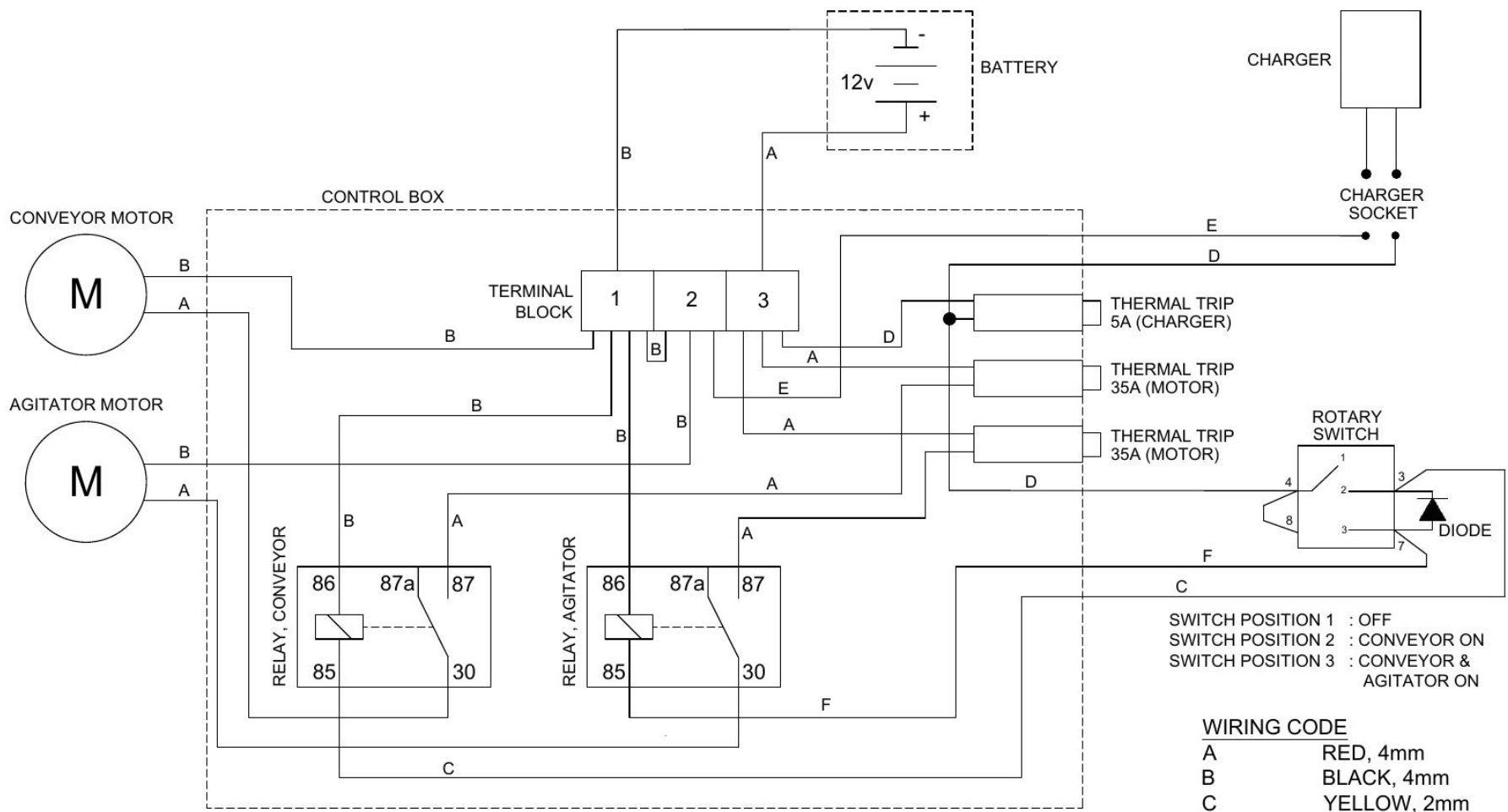


**AGITATOR MOTOR
& COMPONENTS**



ITEM	DESCRIPTION	NUMBER	QTY.
74	HANDLE ASSY WITH ELECTRICAL PARTS	A1305	1
75	ROTARY SWITCH BOX LID	P1211	1
76	CHARGER SOCKET	X50006	1
77	ROTARY SWITCH	X50007	1
78	DIODE	X50013	1
79	CABLE GLAND	X50004	1
80	POZI PAN HD SCREW	X11093	8
81	FLAT WASHER	X11038	8
82	CONTROL BOX ASSY	A1333	1
83	CONTROL BOX BASE	P1332A	1
84	CONTROL BOX LID	P1332B	1
85	THERMAL TRIP - 5A	X50002	1
86	THERMAL TRIP - 35A	X50012	2
87	3-WAY TERMINAL BLOCK	X50003	1
88	RELAY	X50001	2
89	CABLE GLAND	X50004	3
90	BULKHEAD MOUNT SOCKET	X50005	1
91	POZI PAN HD SCREW	X11097	4
92	FLAT WASHER	X11042	4
93	NYLOC NUT	X11015	4
94	NYLOC NUT	X11016	4
95	BATTERY CLAMP	A1335	1
96	MAXI BATTERY	X50022	1
97	CHARGER	X50009	1
98	CHARGER PLUG	X50014	1
99	HEX HD SCREW	X11103	2
100	SPRING WASHER	X11037	2

**ELECTRICAL
COMPONENTS**



SWITCH POSITION 1 : OFF
 SWITCH POSITION 2 : CONVEYOR ON
 SWITCH POSITION 3 : CONVEYOR &
 AGITATOR ON

WIRING CODE
 A RED, 4mm
 B BLACK, 4mm
 C YELLOW, 2mm
 D RED, 2mm
 E BLACK, 2mm
 F GREY, 2mm

ITEM	PART No.	ITEM	PART No.
CONVEYOR MOTOR	X50021	RELAY, 40A	X50001
AGITATOR GEARED MOTOR	X50015	TERMINAL BLOCK	X50003
CHARGER	X50009	THERMAL TRIP, 5A	X50002
BATTERY	X50022	THERMAL TRIP, 35A	X50012
ROTARY SWITCH	X50007	DIODE	X50013
CHARGER SOCKET	X50006	CONTROL BOX ASSY	A1333

CIRCUIT DIAGRAM