



AG Products

— *AG MINI* —
OPERATION MANUAL

Released Jul 2023

www.ag-products.co.uk

+44 (0) 1565 722922

Contents

1	INTRODUCTION	1
1.1	FOREWORD	1
1.2	SAFETY.....	1
1.2.1	SAFETY PRINCIPLES	1
1.2.2	INTENDED USE	2
1.2.3	MISUSE.....	2
1.2.4	SAFETY SIGNS	3
2	ABOUT THE AG MINI	4
2.1	THE HOPPER.....	4
2.1.1	SERIAL PLATE.....	4
2.1.2	QR CODES.....	5
2.1.3	AGITATOR DISC	5
2.1.4	HOPPER SLIDE	6
2.1.5	VARYING DISTANCE OF APPLICATION.....	7
2.2	THE HANDLEBARS	8
2.2.1	FUNCTIONS ON THE HANDLEBARS	9
2.3	THE ELECTRICAL ENCLOSURE	10
2.3.1	CIRCUIT BREAKERS	11
2.4	AG MINI FLICKERS AND AGITATORS	12
2.5	THE BATTERY.....	14
3	SPECIFICATIONS	15
3.1	ASSEMBLY OF AG MINI	15
3.2	CHARGER.....	16
3.2.1	CHARGING THE AG MINI.....	17
3.2.2	3-STAGE BATTERY CHARGER INSTRUCTIONS.....	18
4	OPERATION	19
4.1	OPERATION AND SAFE USE OF THE AG MINI.....	19
5	MAINTENANCE.....	20
5.1	CLEANING INSTRUCTIONS.....	20
5.2	OUT OF SEASON STORAGE.....	20

5.3	REMOVAL OF HOPPER	21
5.4	CLEARANCE ON DISTRIBUTING VANE	22
5.5	MOTOR REMOVAL	23
6	SPARE PARTS IDENTIFICATION.....	24
6.1	BIN & ROTORS.....	25
6.2	BASE FRAME & HANDLE.....	26
6.3	MOTOR COMPONENTS & BATTERY	27
6.4	ELECTRICAL COMPONENTS	28
6.5	CIRCUIT DIAGRAM	29
7	TERMS, CONDITIONS AND WARRANTY	30
7.1	STANDARD TERMS AND CONDITIONS	30
7.2	QUALITY OF TRANSLATIONS	34
7.3	SAFETY.....	34
7.4	AG PRODUCTS DEALER WARRANTY PROCESS	35

1 INTRODUCTION

1.1 FOREWORD

Thank you for your purchase of the AG Mini.

This manual will assist the operator to set, operate and maintain the AG Mini. For safe and reliable operation, these instructions must be followed at all times. It is particularly important that the safety notes in the following section are read and understood by all users and maintainers of the machine before it is used.

1.2 SAFETY

The following safety instructions are applicable to all chapters of this manual.

1.2.1 SAFETY PRINCIPLES

Accident prevention programs can only prevent accidents with the co-operation of the persons responsible for the operation of the equipment.

For the safety of yourself and others, operate equipment with care and do not take unnecessary risks, which could cause an accident.

Please read all safety instructions contained in this manual with the utmost care and observe all safety signs attached to the AG Mini. Please ensure these instructions are made available and are understood by all other users of the AG Mini. You are strongly advised to refrain from any working methods which may be hazardous.

All relevant accident prevention regulations governing the operation of agricultural machinery, as well as other generally acknowledged health and safety regulations must be strictly observed.

CAUTION



This symbol will appear throughout this manual whenever your safety or the safety of others is involved.

1.2.2 INTENDED USE

The AG Mini is intended for single operator use for dispensing disinfectant materials into cattle cubicles.

1.2.3 MISUSE



Foreign objects, such as stones, metal objects etc. must not be allowed to enter the AG Mini. Failure to observe this may result in damage to the machine and / or injury to the operator or others.

Do not ride on the AG Mini or permit others to do so.

Do not attempt to modify the AG Mini or the wiring.

Do not attempt to operate the machine outside the specifications without reference to Garnett Farms Engineering Ltd or an authorised distributor.

Misuse also comprises failure to observe the instructions as given in this manual and the recommended maintenance and service requirements.

Do not tow the AG Mini.

1.2.4 SAFETY SIGNS

The following signs appear on the machine and are for your safety and the safety of other people. Ensure that you identify each symbol and understand its warning.



All safety signs must be kept in a legible condition and must be replaced if damaged or missing.

Safety signs used.



Switch off power and remove isolator switch



Keep a safe distance from the machine to avoid injury



Don't reach into the hopper / gain access into the hopper due to the danger of rotating parts



Risk of electric shock from overhead power lines when lifting the machine



Danger of Entrapment



Ear protection is advised



Read and understand this manual before operating the machine



Use of a dust mask is advised



Return used batteries to Garnett Farms Engineering Ltd or an authorised distributor for disposal.

2 ABOUT THE AG MINI

2.1 THE HOPPER

The AG Mini hopper is where the bedding product is held. It is made with stainless steel to maximise life span.



2.1.1 SERIAL PLATE

The AG Mini is identified by the serial plate. The serial plate is located on the hopper of the machine, facing the handlebars. The serial plate includes AG Products details and contact information, C E marking, the AG Product, year of manufacture, the unique serial number, and the weight of the AG Mini in kgs.



2.1.2 QR CODES

Two QR codes can be found on the AG Mini hopper, located either side of the serial plate. Both codes are labelled, the left code is the parts manual for the AG Mini and the code to the right of the serial plate is the operator's manual. By scanning the code with a smart phone camera, a link will appear on the screen. Click the link to access the AG Mini operator's manual.



2.1.3 AGITATOR DISC

The red agitator disc, found in the hopper, moves bedding product through the hopper onto the flickers.

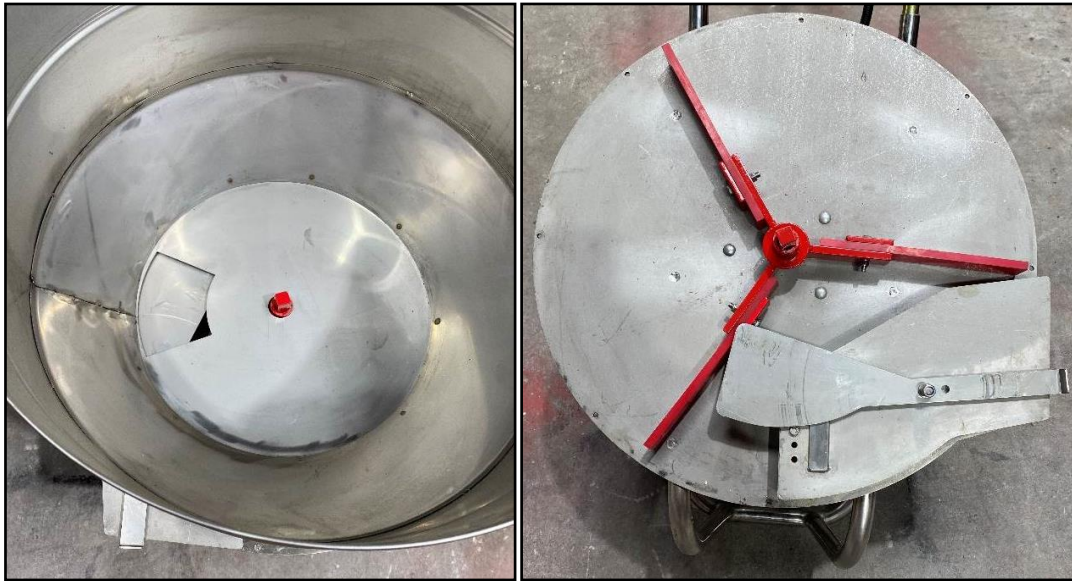


2.1.4 HOPPER SLIDE

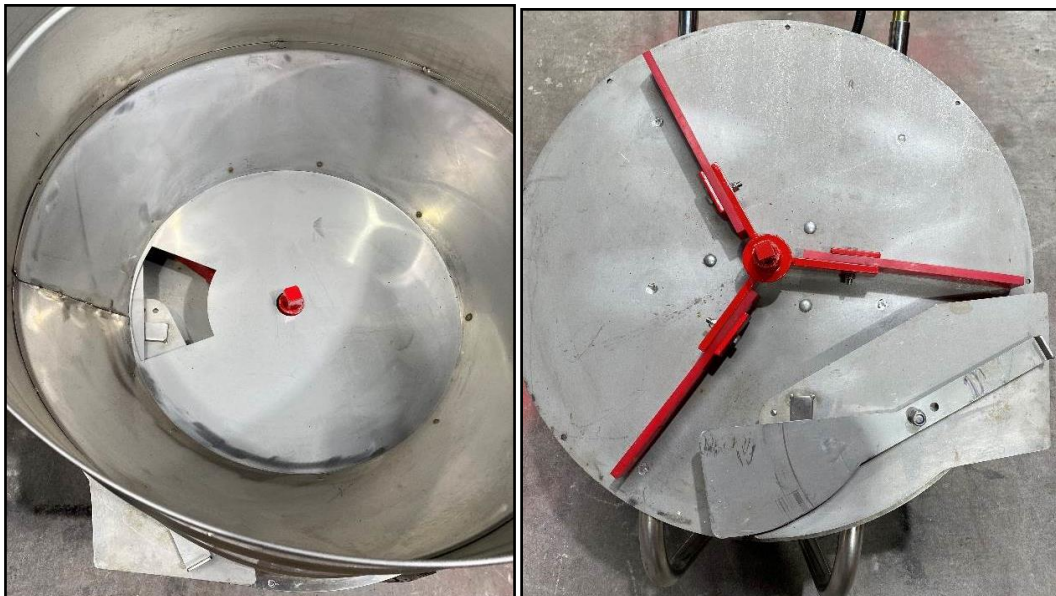
Ensure machine is switched off before adjusting.

The volume of material dispensed is controlled by the position of the hopper slide. The hopper slide is attached to the flicker unit as shown in the images below. The slide is pivoted about the point at which it is attached. There are two possible pivot points, the two pre-set holes in the slide allow for added slide adjustment.

Fully closed.

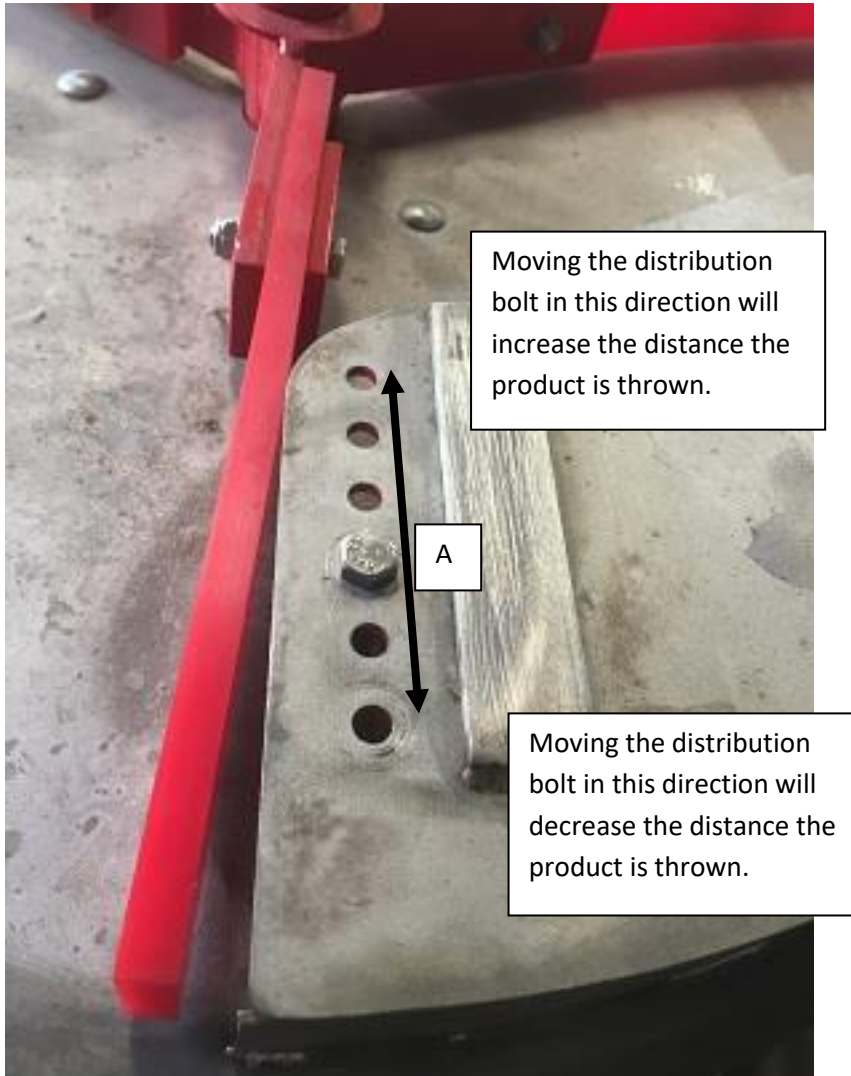


Fully open.



2.1.5 VARYING DISTANCE OF APPLICATION

It is also possible to alter the distance the material is distributed.



Moving distribution bolt (A) from its standard factory setting, as shown in the image above, will increase or decrease the distance the product will be thrown from the dispenser onto the cubicle.

2.2 THE HANDLEBARS

Handlebar inserts, bolted to the chassis of the AG Mini means that the handlebars are adjustable to suit operator.

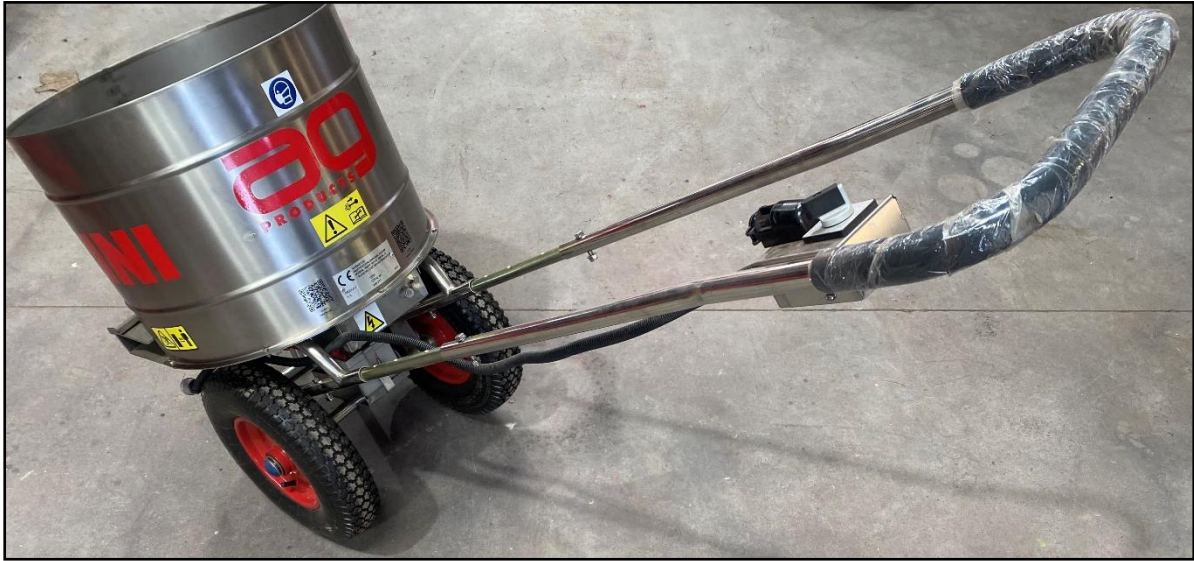


The handlebar inserts come with 4x pre-set holes offering various adjustment for operator.

Fully closed handlebars



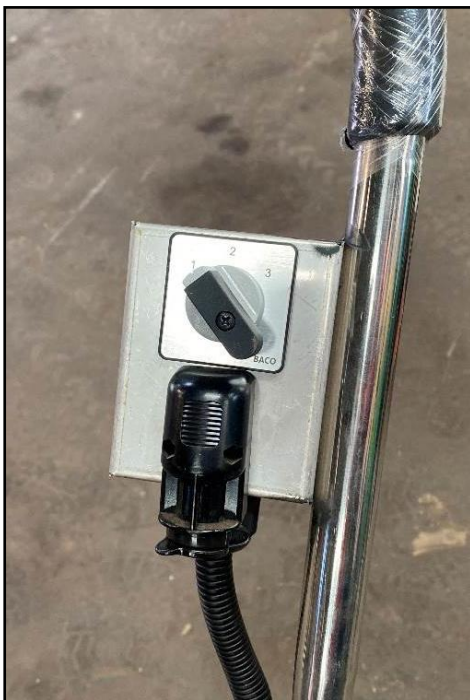
Fully extended handlebars



With a cushioned handle to maximise user comfort as standard.

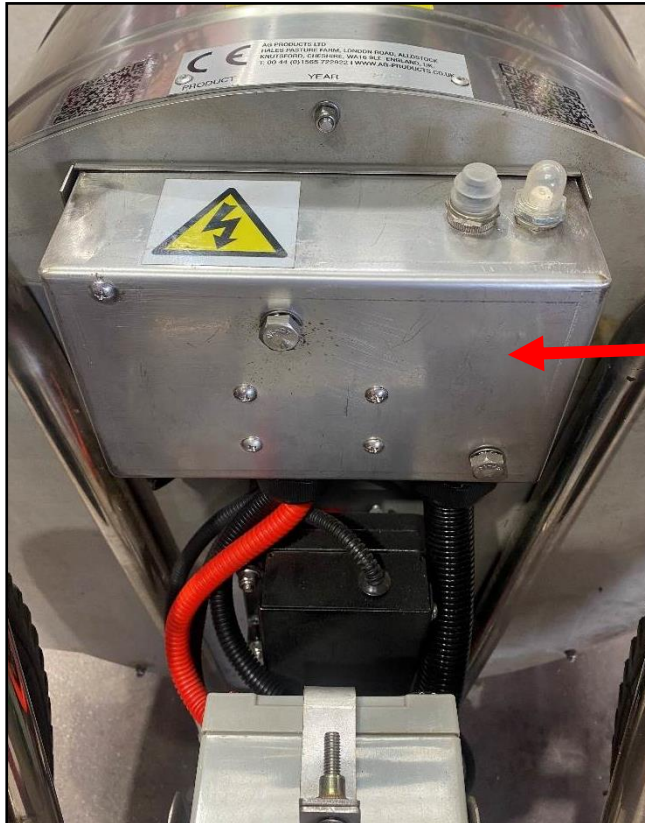
2.2.1 FUNCTIONS ON THE HANDLEBARS

Located on the handlebars is the main 3 position Off/On/Off switch for the flickers and agitator function. Also fitted to the handlebars is the female charger port, for charging of the AG Mini battery.



2.3 THE ELECTRICAL ENCLOSURE

The electrical enclosure for the AG Mini is bolted to the underside of the chassis, located above the battery. The enclosure protects wiring components inside of the enclosure from water, muck, and bedding. Here you will find components for flickers, agitator and charging circuits. Protruding from the enclosure are 2x push button reset trips for the agitator and charging circuit.

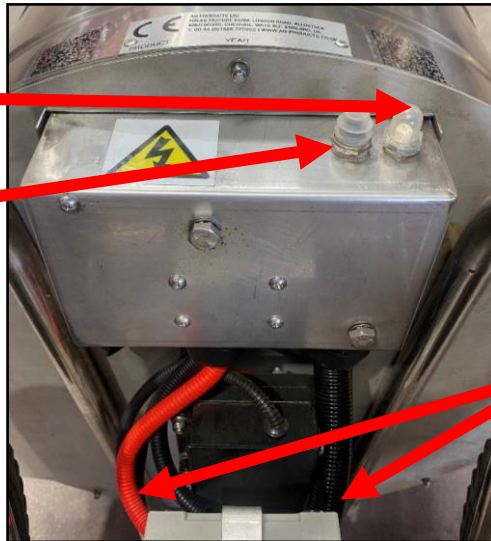


2.3.1 CIRCUIT BREAKERS

Breaker functions:

Right hand button = charger
breaker.

Left hand button = motor
breaker.



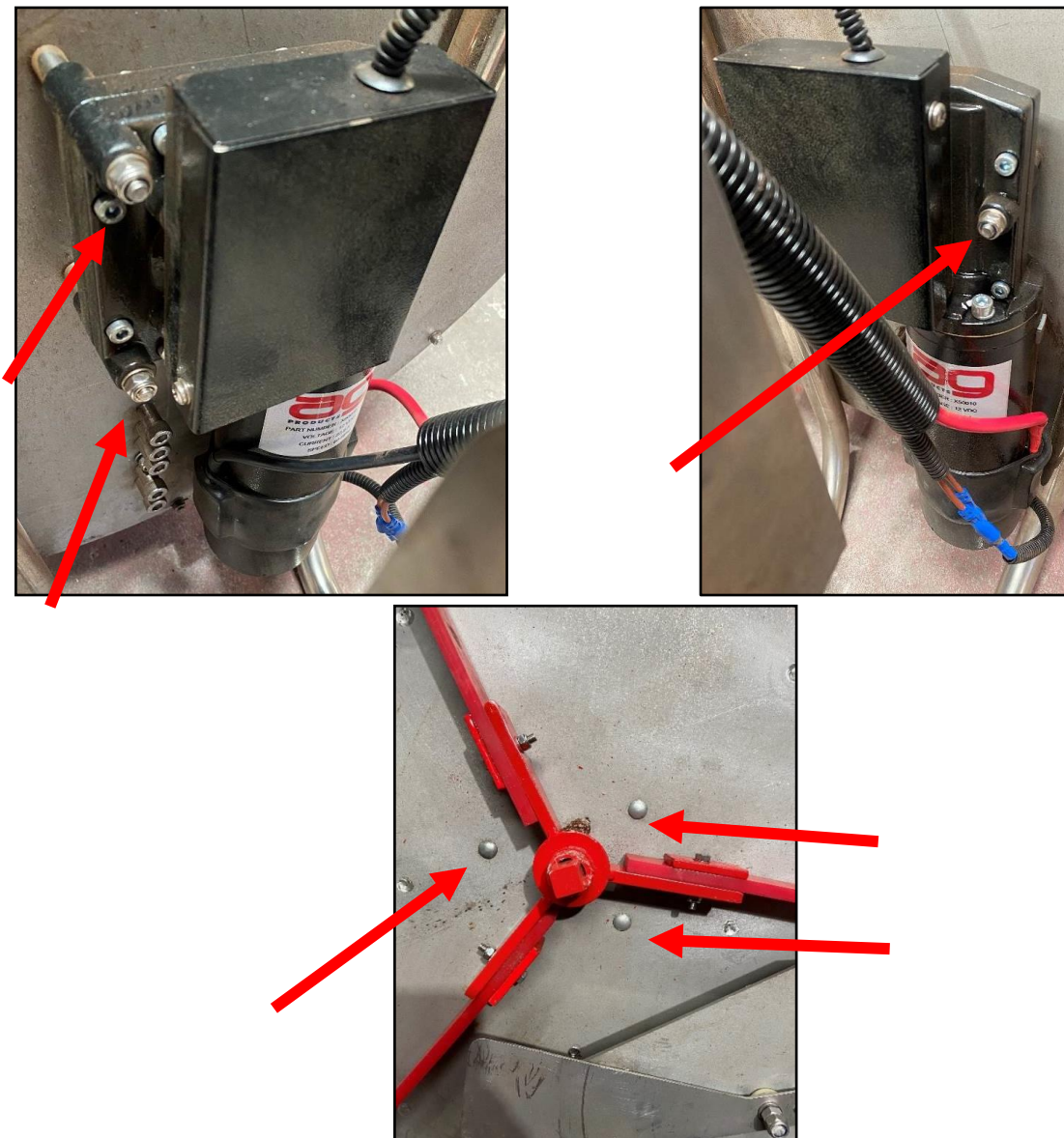
Disconnect battery
terminals before
maintenance, shown
by the arrows.

CAUTION

In the unlikely event of machine blockage, always ensure the AG Mini is switched off and the battery is disconnected. Never attempt to clear blockages by hand; always use a tool of some kind.

2.4 AG MINI FLICKERS AND AGITATORS

The agitator motor and gearbox are fixed to the underside of the AG Mini chassis, above the battery. The 3x M6 cup-head bolts fix the motor and gearbox to the AG Mini chassis. Bolts are fitted through the top side of the chassis, below the flickers and through the gearbox housing as illustrated below. 12 V from the electrical enclosure powers the agitator motor. 12 V also powers the brake fitted to the agitator motor, 12 V releases the brake, turning the agitator shaft. 12 V micro switch is fitted to the agitator gearbox, the micro switch works with the agitator motor brake to ensure the flickers stop in the correct position every time.

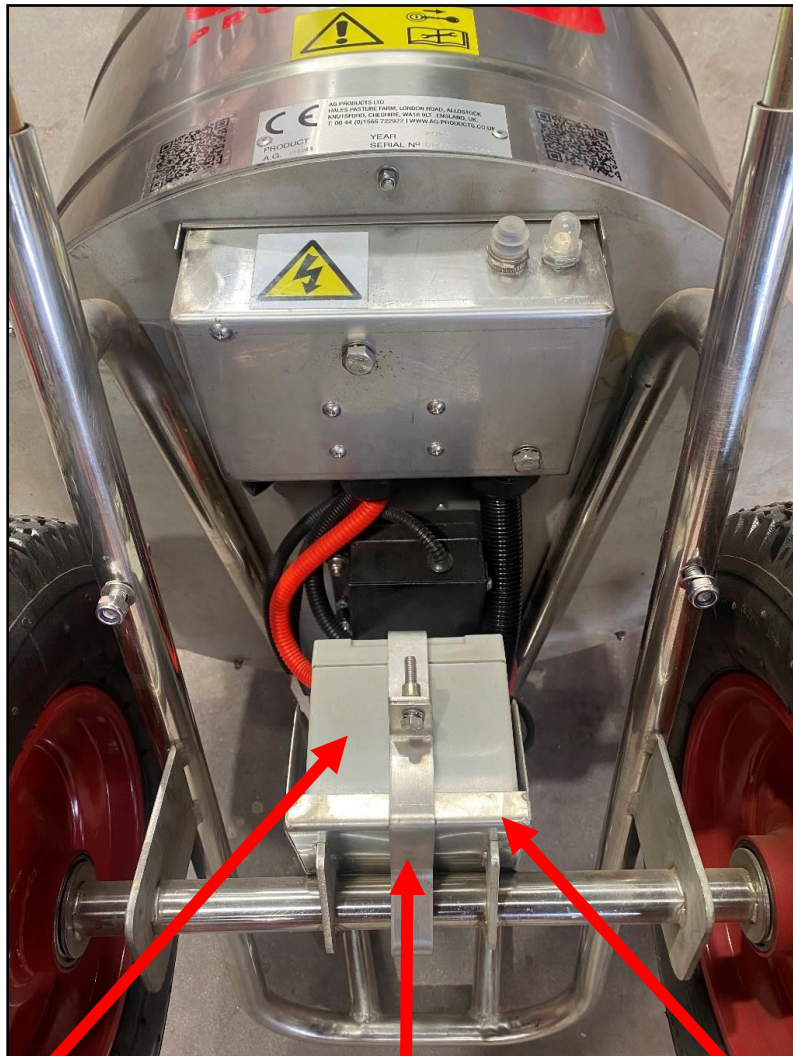


The agitator shaft is fixed to the shaft of the gearbox by a roll pin. With the hole in the centre of the AG Mini hopper, the agitator shaft protrudes through the base of the hopper for the red agitator disc to be fitted.



2.5 THE BATTERY

The AG Mini 12 V battery is located underneath the chassis of the dispenser. The battery is secured in position, by a battery clamp, in the battery tray located on the axle.



AG Mini battery.

Battery tray.

Battery clamp.

3 SPECIFICATIONS

3.1 ASSEMBLY OF AG MINI

Practice workshop safety at all times!

CAUTION

Disconnect battery before assembly of AG Mini.

- 1) Ensure the AG Mini is placed on the ground in a stable condition.
- 2) Ensure all guards are fitted correctly before use.



Place the wheel onto the base frame of the machine and then secure by placing the washer and external Circlip in the order shown.

Finally fit the wheel cap to ensure the bearings are kept free from foreign materials.



Insert handlebar connecting rods ensuring that the solid end goes towards the bass of the bin.

Fit the handle to the main body and fasten using the nuts and bolts provided.

3.2 CHARGER

The 12 V charger is supplied with all AG Minis. With a “Soft start” feature to check for possible faults i.e. reverse battery connection or short circuit, before offering maximum charge current.

A “Constant current bulk charge and 3 stage charging” feature provides the fastest possible way to recharge SLA batteries without over-charging.

A “Constant voltage float” feature compensates for self-discharge, holding the battery at peak charge, ready for use. The battery can be left on charge until required without fear of overcharging.



Inside the charger box you will find the General Instruction Sheet RE Range 3 Stage Chargers, the main body of the charger with 2x LED indication lights, red and green, Euro plug, 3 pin mains plug, fuse included, and the male charger port already fitted.

3.2.1 CHARGING THE AG MINI

Read the charger manual provided in the charger box.



- 1) Ensure the switch is in position 1.
- 2) The AG Mini will require a complete charge before use. Plug the male jack plug into the female charger port.
- 3) The green light on the charger should now illuminate for 5 seconds before switching to a solid red light. The battery is now charging.
- 4) When the green light illuminates, the battery is fully charged and will continue to “float charge”.
- 5) The AG Mini can be left on float charge continuously.

Position 1 - OFF

Position 2 – AGITATOR ON

Position 3 – OFF

- Only charge when switch is in position 1.
- Never charge the AG Mini with any other charger than the unit supplied.
- Never charge in the rain or wet conditions.
- Never leave the battery flat, always charge the battery after use.
- No damage will occur if left on “float charge” i.e. green light.
- Damage may occur to battery if it is left flat.

3.2.2 3-STAGE BATTERY CHARGER INSTRUCTIONS

- 1) Plug the charger in and switch on.
- 2) During start up the charger will determine battery status and depending on the result will switch to either BULK charge mode (red indicator ON) OR FLOAT charge mode (green indicator ON) NOTE, when the charger enters float charge mode the battery is 100% fully charged.
- 3) If neither of the indicators illuminate then unplug the charger, check the fuse in the plug, replace if necessary, plug back in and switch ON.

Operation

First stage – constant current mode. Visual indication: **Red LED ON, Green LED OFF.**

Second stage – constant voltage mode. Visual indication: As above.

Third stage – float charge mode. The battery will be maintained 100% charged. Visual indication: **Green LED ON, Red LED OFF.**

Note: On power up the charger will appear to be in “float” mode for a short period of time. This is to complete all checks as described in the feature “soft start”.

Features

“Soft start” – On power up the system will enter a “soft start” mode. This facility checks for possible faults i.e. reverse battery connection, short circuit etc, before offering maximum charge current.

“Reverse polarity protection” – Prevents damage to the charger if the battery is accidentally connected in reverse, visual indication is by a continuous flashing red indicator.

LED Protocol

Charger status	LED status
Bulk charge mode	Red – static – ON
Float charge mode (charge complete)	Green – static ON
Battery reversal detected	Red – flashing
High temperature detected	Red + Green light flashing simultaneously
Short circuit	Red + Green light flashing alternately
Open circuit	Red + Green static simultaneously

4 OPERATION

4.1 OPERATION AND SAFE USE OF THE AG MINI



IMPORTANT: SAFETY FIRST: Before loading the machine, ensure it is correctly constructed and all guards are in place and secured. DO NOT operate the machine with bystanders present.

The AG Mini has been designed to bed cubicles with ease and speed, following some simple guidelines in this booklet will ensure the AG machine is reliable and satisfactory.

- Do not overload the machine.
- Do not use any material in the machine other than is specified by the manufacture.
- Do not allow stones and rocks to enter the machine when filling.
- No bystanders allowed in the working area.
- Only the operator must operate the AG Mini.
- Never leave the material you are spreading in the AG Mini when not in use.
- Never use the AG Mini to carry any additional objects.
- Always clear the material out of the hopper after use.
- Never use damp or wet materials.
- Do not pull the AG Mini over any steps.

5 MAINTENANCE

5.1 CLEANING INSTRUCTIONS

- **Disconnect the battery before cleaning.**
- **DO NOT use a pressure washer to clean the machine.**
- We recommend using compressed air to blow away any waste material.
- A cleaning agent can be used on any heavily soiled areas.
- Wipe down with a wet cloth.
- Avoid water touching the battery and terminals.

5.2 OUT OF SEASON STORAGE

- Clean the machine thoroughly.
- Leave fully charged.
- Light coating of oil.
- **Store undercover.**
- **Do not fill and leave overnight.**

5.3 REMOVAL OF HOPPER

CAUTION

Disconnect battery terminals!

When servicing the AG Mini, the following steps may wish to be followed. These steps, if followed, will ensure that the AG Mini is running to its full potential.

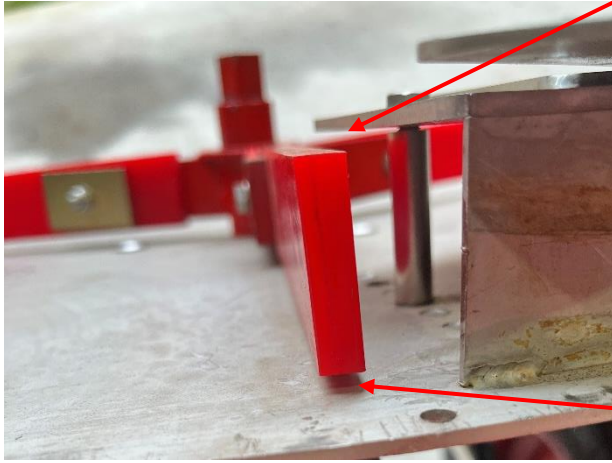


Remove the agitator plate, by simply pulling the plate off the shaft.



Remove the five nuts and bolts positioned around the perimeter of the drum. This will release the hopper from the base.

5.4 CLEARANCE ON DISTRIBUTING VANE

**B**

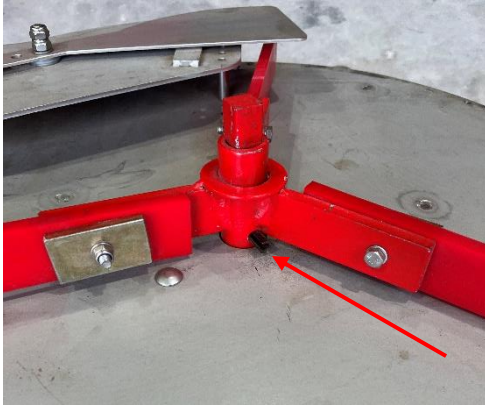
Ensure a clearance gap of 3 mm between the distributor arm and the base of the machine indicated by the arrow marked A.

Also ensure there is a gap of 5 mm between the distributor arm and the top plate indicated by the arrow marked B.

A

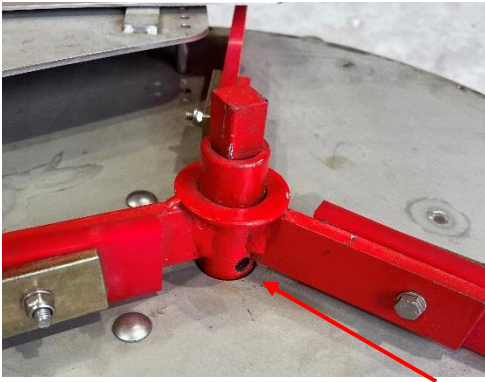
Ensure that the distribution flexible arms are connected on the left-hand side of the metal frame of the distribution arms.

5.5 MOTOR REMOVAL



To remove the flicker vane, you need to first remove the bin.

Then taking a punch and hammer you need to remove the roll pin.

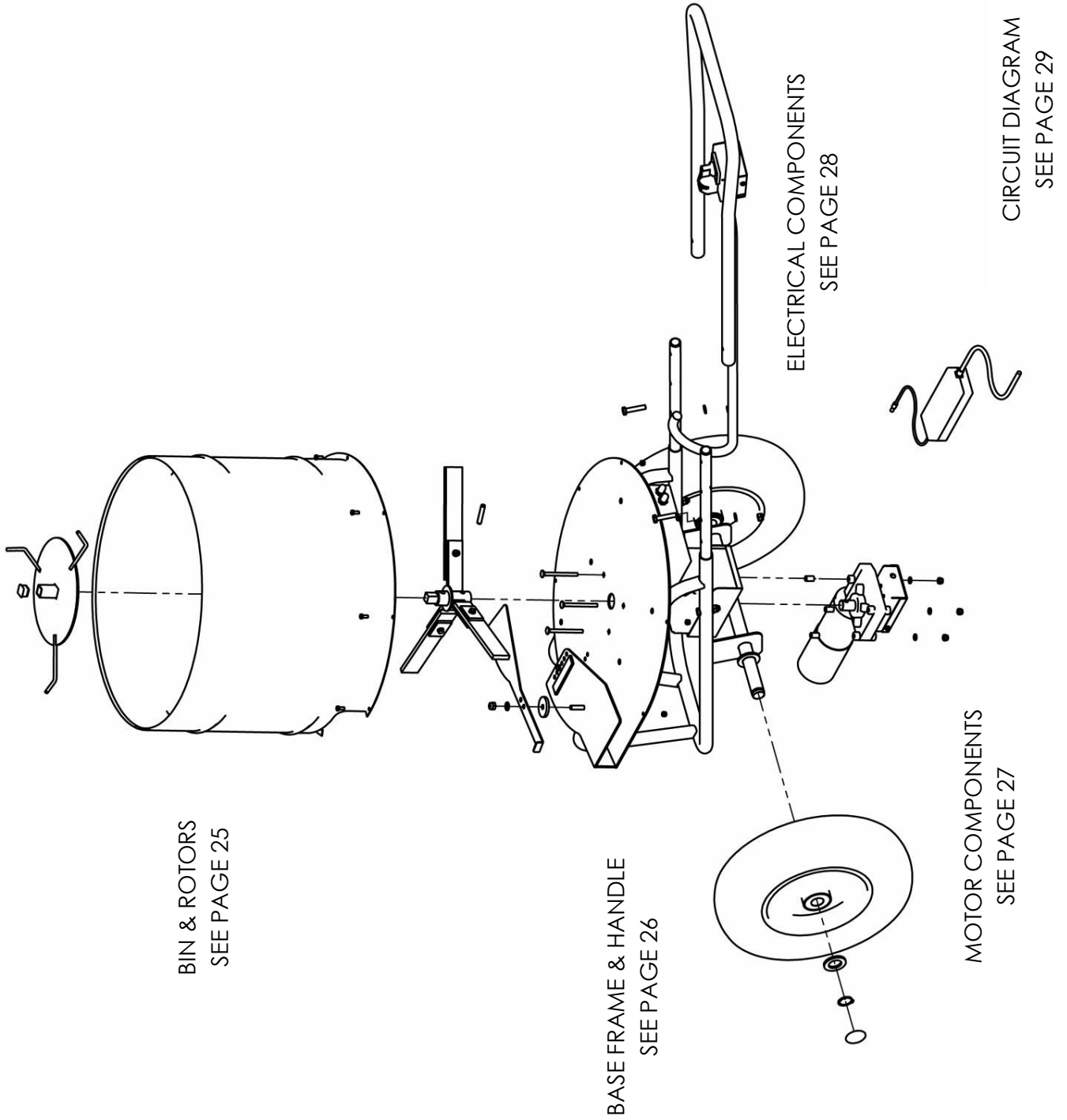


Once the roll pin is removed the vane will pull off.



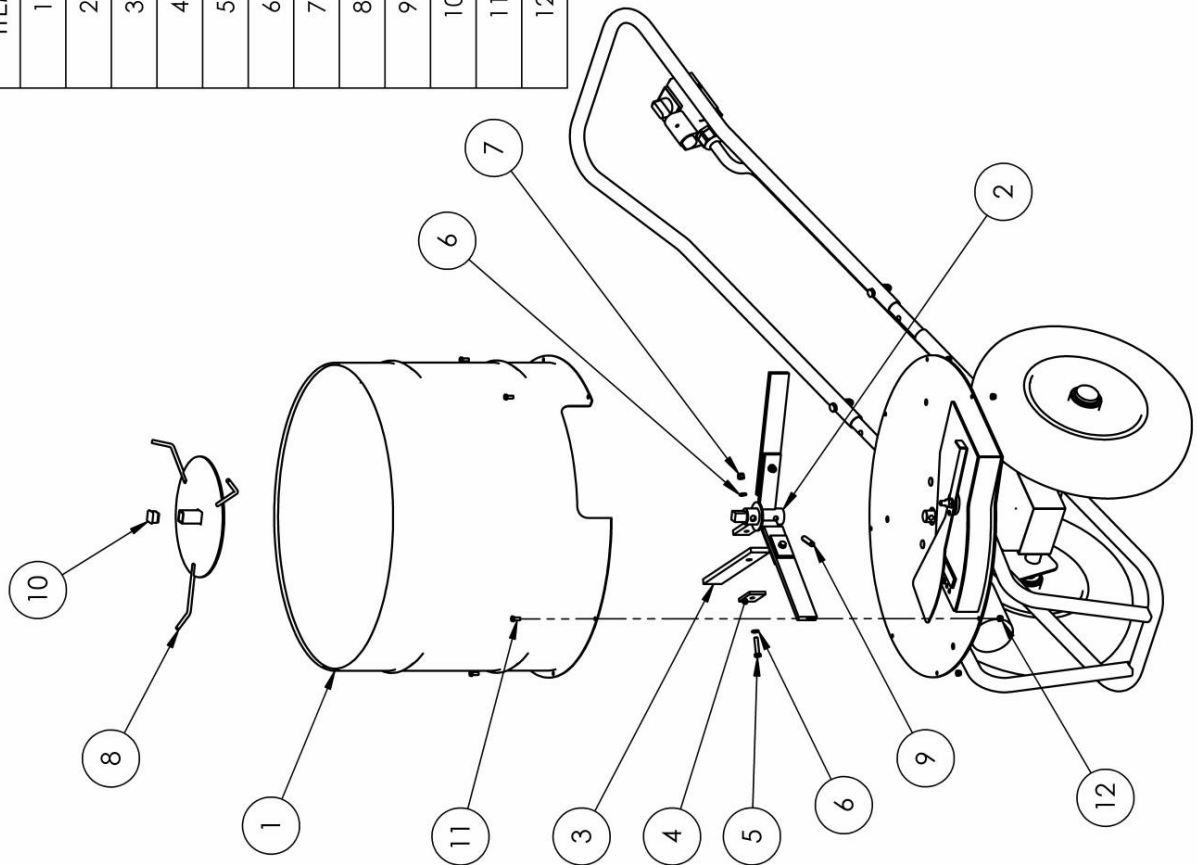
For removal of the gear box, you need to remove the three 8 mm nuts and bolts.

6 SPARE PARTS IDENTIFICATION



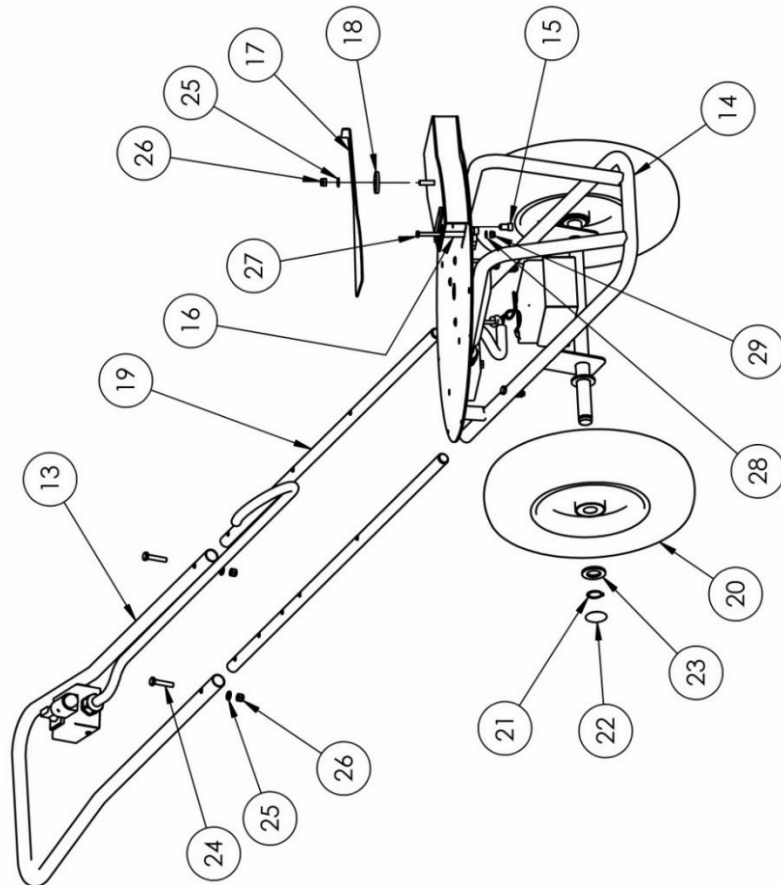
6.1 BIN & ROTORS

ITEM	DESCRIPTION	NUMBER	QTY.
1	HOPPER WELD ASSY	A1201	1
2	SPINNER WELDED ASSY	A1221	1
3	SPINNER BLADE	P1222	3
4	CLAMP PLATE	P1223	3
5	HEX HD SCREW	X11089	3
6	FLAT WASHER	X11029	6
7	NYLOC NUT	X11013	3
8	DISC WELDED ASSY	A1230	1
9	C-PIN	X21530	1
10	SHS END CAP	X21611	1
11	HEX HD SCREW	X11092	7
12	NYLOC NUT	X11014	7

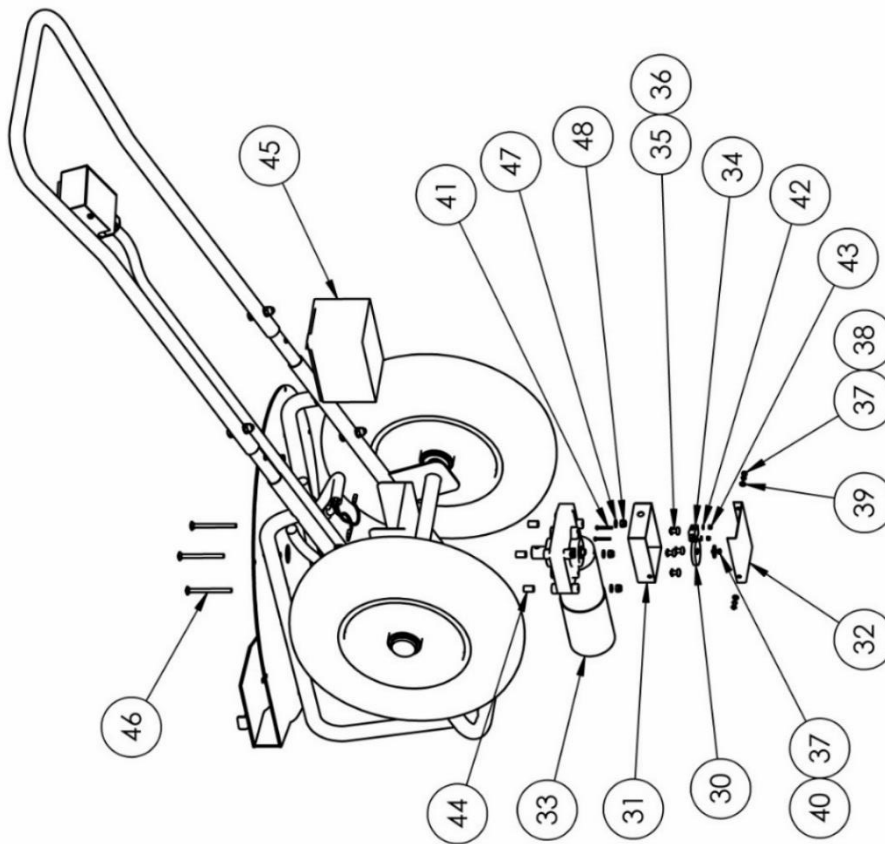


6.2 BASE FRAME & HANDLE

ITEM	DESCRIPTION	NUMBER	QTY.
13	HANDLE WELDED ASSY	A1210	1
14	FRAME WELD ASSY	A1212	1
15	PLUG WELDED ASSY	A1228	5
16	CHANNEL SLEEVE	P1212D	1
17	CONTROL SLIDE	P1213	1
18	CONTROL SLIDE SPACER	P1219	1
19	JOINING SHAFT	P1227	2
20	PEDESTRIAN DISPENSER WHEEL & TYRE	X21201	2
21	EXTERNAL CIRCLIP	X21502	2
22	PUSH-ON END CAP	X21610	2
23	FLAT WASHER	X11036	2
24	HEX HD SCREW	X11080	4
25	FLAT WASHER	X11027	5
26	NYLOC NUT	X11006	5
27	HEX HD SCREW	X11088	1
28	FLAT WASHER	X11029	1
29	NYLOC NUT	X11013	1

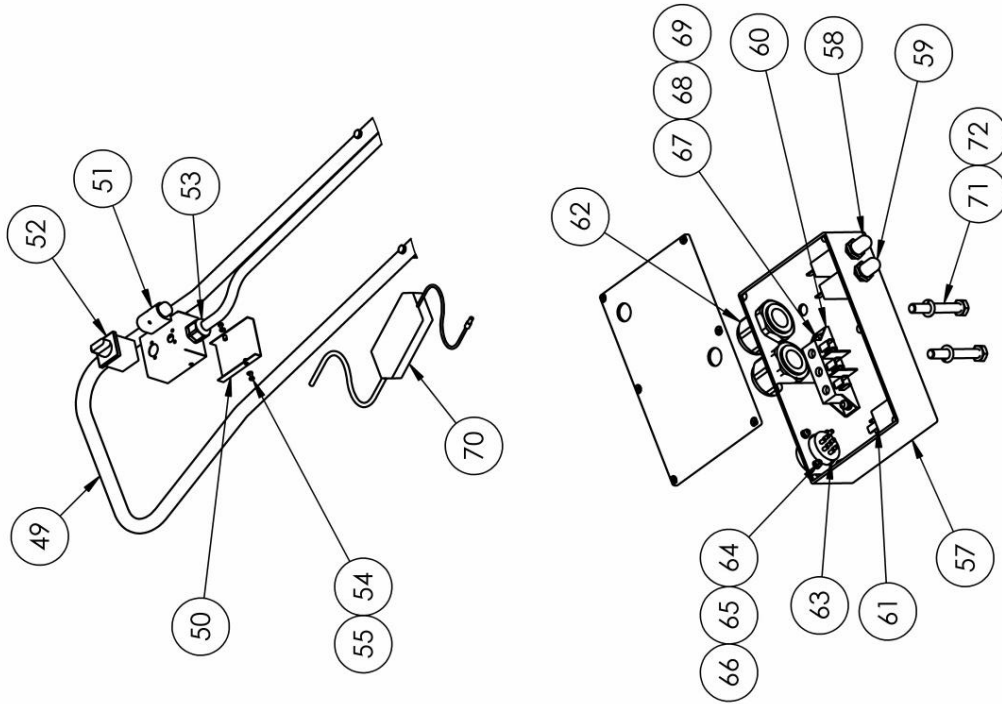


6.3 MOTOR COMPONENTS & BATTERY



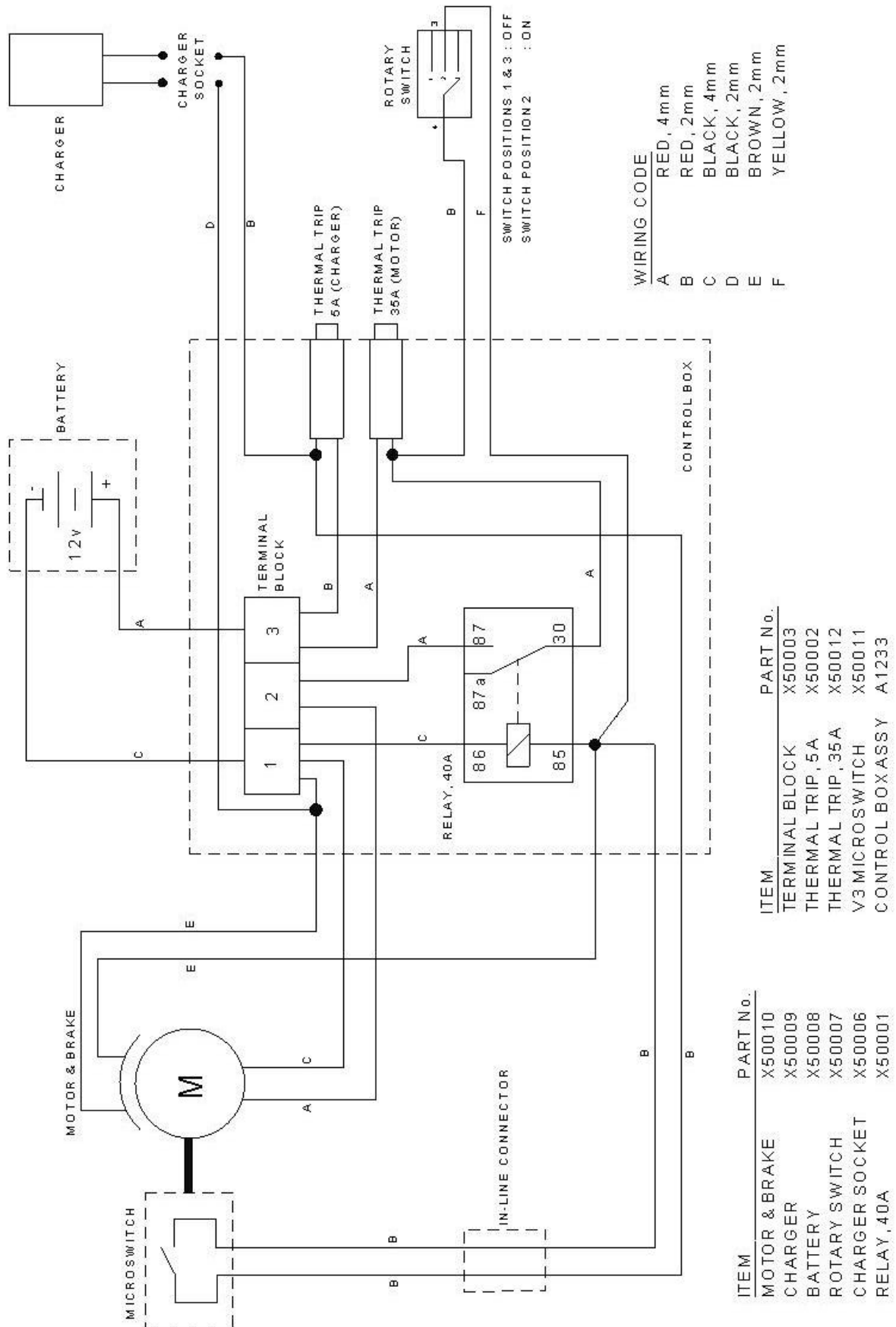
ITEM	DESCRIPTION	NUMBER	QTY.
30	CAM WHEEL	P1215	1
31	CAM BOX	P1217	1
32	CAM BOX COVER	P1218	1
33	GEARED MOTOR, BRAKED	X50010	1
34	V3 MICROSWITCH	X50011	1
35	POZI PAN HD SCREW	X11094	4
36	SPRING WASHER	X11039	4
37	POZI PAN HD SCREW	X11093	3
38	SPRING WASHER	X11040	2
39	FLAT WASHER	X11038	2
40	LARGE FLAT WASHER, Ø20	X11041	1
41	POZI PAN HD SCREW	X11095	2
42	FLAT WASHER	X11042	2
43	NYLOC NUT	X11015	2
44	MOTOR STAND-OFF	P1214	3
45	BATTERY	X50008	1
46	CUP HD SQR BOLT	X11096	3
47	FLAT WASHER	X11029	4
48	NYLOC NUT	X11013	4

6.4 ELECTRICAL COMPONENTS



ITEM	DESCRIPTION	NUMBER	QTY.
49	HANDLE ASSY WITH ELECTRICAL PARTS	A1205	1
50	ROTARY SWITCH BOX LID	P1211	1
51	CHARGER SOCKET	X50006	1
52	ROTARY SWITCH	X50007	1
53	CABLE GLAND	X50004	1
54	POZI PAN HD SCREW	X11093	2
55	FLAT WASHER	X11038	2
56	CONTROL BOX ASSY	A1233	1
57	CONTROL BOX MODIFICATION	A1232	1
58	THERMAL TRIP - 5A	X50002	1
59	THERMAL TRIP - 35A	X50012	1
60	3-WAY TERMINAL BLOCK	X50003	1
61	RELAY	X50001	1
62	CABLE GLAND	X50004	2
63	BULKHEAD MOUNT SOCKET	X50005	1
64	POZI PAN HD SCREW	X11097	4
65	FLAT WASHER	X11042	4
66	NYLOC NUT	X11015	3
67	POZI PAN HD SCREW	X11093	3
68	FLAT WASHER	X11038	3
69	NYLOC NUT	X11016	3
70	CHARGER	X50009	1
71	HEX HD SCREW	X11090	2
72	SPRING WASHER	X11037	2

6.5 CIRCUIT DIAGRAM



7 TERMS, CONDITIONS AND WARRANTY

7.1 STANDARD TERMS AND CONDITIONS

Garnett Farms Engineering Limited

These terms and conditions and any dispute or claim arising out of or in connection with them shall be governed by and construed in accordance with English law, and the parties submit to the exclusive jurisdiction of the English courts.

TERMS AND CONDITIONS OF BUSINESS (HOME MARKET)

Definitions

“The Company” means Garnett Farms Engineering Limited. “The Customer” means the Company, organisation, firm or person whose order for goods is accepted by the Company.

General

All quotations given and orders accepted by the Company are subject to these terms and conditions of business. All other terms, conditions and modifications are excluded unless agreed to in writing by the Company.

Specifications

The Company’s policy is one of continuous improvement and development. Specifications and prices are therefore subject to change without notice. Published descriptions of goods are intended to provide a general idea of the goods and shall not constitute a sale by description.

Prices

All price lists previous to that which is the latest at the time of ordering are cancelled. Except for specific equipment as listed in the current price list, prices for machines include delivery to the dealer’s premises in mainland Britain. Where whole or part carriage is chargeable, details of rates and machines involved are given in the price list currently applicable. Delivery of spare parts is chargeable and is dependent upon the method of transport requested by the Customer at the time of ordering. The minimum invoice charge, excluding VAT, is £10.

Listed prices and delivery charges do not include VAT or any other tax or levy on the supply of goods, which will be an additional charge to the Customer.

Payment Terms

Unless otherwise agreed in writing at the time of ordering, payment terms will be strictly in line with the published Marketing Strategy current at that time. If payment is not made by the due date, the Company shall be entitled to charge interest on the outstanding amount at 4% above the current Bank Base Rate, accruing daily.

Late payment of special nett or early payment invoices may incur a single surcharge of 5% by way of loss of discount.

Delivery

Delivery of machines will be scheduled depending upon Company transport, but every attempt will be made to meet the customer's requirements. Delivery dates specified verbally or in writing are approximate only.

The method of transport required for the delivery of spare parts must be specified at the time of ordering. The Company accepts no liability for delay in delivery or the consequences of any such delay howsoever caused.

The Customer must notify the Company immediately upon receipt of the goods of any damage, shortage, or errors in delivery. Non-receipt of goods must be notified within 7 days of receipt of invoice unless the invoice specifically refers to an early payment scheme. The responsibility for the goods will pass to the Customer from the time of delivery.

Title

All goods remain the property of the Company until the Customer has paid in full the whole of the contract price. While the goods remain the property of the Company, the Customer shall keep them in good condition and insure them against damage or theft. They shall be returned to the Company upon demand. Any proceeds from an insurance claim in this connection shall belong to the Company for whom the Customer shall hold the same in trust. The Customer is prohibited from creating any mortgage, charge, lien or other encumbrance adverse to the title of the Company.

The Customer will keep the Company's goods separately identifiable and if the goods are resold, the Customer will have the fiduciary duty to account to the Company for the proceeds of the sale.

Returns

No goods will be accepted for credit by the Company without prior agreement. Any goods accepted for credit shall be returned at the Customer's expense and will be subject to a 10% handling charge unless otherwise agreed.

Warranty

The guarantee is in addition to and does not affect a purchaser's statutory rights.

Garnett Farms Engineering Limited products carry a 12-month Parts and Labour Warranty. Certain products carry an extra warranty as specified in the relevant sales literature. Components supplied as part of the original machine, but manufactured by another company e.g. PTO shafts, wheels etc., are subject to the original manufacturer's condition of warranty. Failure of wearing parts due to "Fair Wear and Tear" is not covered by the terms of the warranty.

The Warranty is invalidated by misuse, neglect and improper repairs or adjustment. The warranty does not cover fire or accidental damage.

The right to withdraw warranty is reserved if:

Non-original parts are fitted;

The machine has been abused, badly maintained or used for purposes other than that for which it was intended.

When ordering parts under warranty, this must be made clear at the time of ordering, giving the serial number of the machine (where appropriate) and the date of purchase. The parts will either be supplied free of charge or invoiced then credited upon receipt of the defective parts if the claim is accepted.

The cost of carriage of parts supplied under warranty will be paid by the Company except where express delivery is requested by the Customer. Under such circumstances, the Company reserves the right to charge for the cost difference between express and normal transport.

Parts replaced under warranty shall become the property of the Company and the return of those parts for inspection may be requested. Payment for the parts and carriage will be due in the event of the failure being found to be outside the terms of the warranty.

An agreement and an authorisation number must be sought from the Company by the repairer before warranty repairs are commenced. Warranty claims will not be considered without a valid authorisation number.

Credit cannot be issued for parts not supplied by the Company unless there has been a prior agreement for the use of those parts. Where such agreement exists, the credit given will normally exceed the value which would have been invoiced if the parts had been obtained from the Company.

Warranty claims must be submitted within four weeks of the repair.

Standard rates apply for credit of claims for labour and travelling (up to a maximum of 30 miles).

Parts fitted outside of the machine's warranty period carry a 3-month warranty on parts only. The warranty cannot be transferred to the initial purchaser.

Except as mentioned above, no condition of warranty, collateral warranty or representation as to the goods or their quality, design, specification, performance or fitness for a particular purpose if given by the Company or shall be implied into the sale of goods by law. The Company shall not be liable, whether in contract, tort or otherwise for any loss, damage, expense or injury (except personal injury or death) whether to person or property, howsoever caused and whether direct or consequentially suffered by the Customer, his employees, agents or any third party arising out of the contract for the sale of the goods, the goods supplied, or work done by the Company.

To qualify for the full benefit of this warranty, the dealer must ensure that the warranty registration details have been returned to Garnett Farms Engineering Ltd within 30 days from the date of delivery. Using the machine implies the knowledge and acceptance of these instructions and the limitations contained here in this manual. Garnett Farms Engineering Ltd reserves the right to suspend the operation of these warranty conditions unless and until the purchaser has paid in full for the goods or parts in question.

7.2 QUALITY OF TRANSLATIONS

Where instructions for use are translated from these Original Instructions into other languages, expert translators or specialists shall be responsible for the translation, including editing and proofreading, and:

- have basic competencies in communication, particularly technical communication.
- be familiar with the subject area.
- be fluent in the original and target languages, preferably native speakers in the target language.

Colloquial expressions and untypical regional variations of names and product features should be avoided.

Translated instructions should be clearly marked as translations of the Original Instructions.

7.3 SAFETY

It is the responsibility of the dealer to ensure the end-user is handed the instruction book and receives adequate training in the safe use of the machine.

7.4 AG PRODUCTS DEALER WARRANTY PROCESS

Warranty Registration

Form must be completed: <https://www.ag-products.co.uk/warranty-registration-form/>

within 30 days of purchase. The warranty must be registered to the end user.

Warranty Claim

To make a claim under warranty

- Diagnose the fault via the telephone with the customer and attend the breakdown with likely parts required to fix the fault.
- Take pictures of the serial number of the machine, any failed parts, and general pictures of the machine.
- Email the completed warranty claim form with corresponding photos to service@ag-products.co.uk within 30 days of identification of the fault.
- All failed parts must be held for 3 months unless instructed by AG Products
- AG Products aim to process and credit where applicable all claims within 60 days of submission of the warranty claim.

Exceptions to Warranty Cover

- Damage or depreciation caused by normal wear and tear. Parts which have been subject to alteration, modification, or fitment of non-genuine AG Products parts, wilful or accidental damage, damage caused by foreign objects (e.g. stones, metals, and any other materials other than suitable for the machine's intended use).
- Damage or depreciation caused by neglect or failure to carry out proper maintenance as recommended in the operation manual.
- Damage or depreciation caused by abnormal or improper use in accordance with AG Products recommendations and/or as per the operating manual.
- Environmental damage

Key Contacts

Warranty Claims

Alex Riley

t. 01565 722922

e: service@ag-products.co.uk

Parts Orders

Gareth Woofitt

t. 01565 722922

e: dispatch@ag-products.co.uk

